

**INSTRUMENT APPROACH  
CHART (IAC)**

**CAMPINAS / Viracopos, INTL (SBKP)**

**RNP Z RWY 15**

**AD ELEV: 2170'**

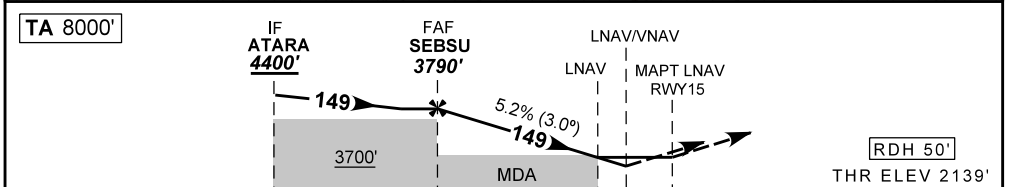
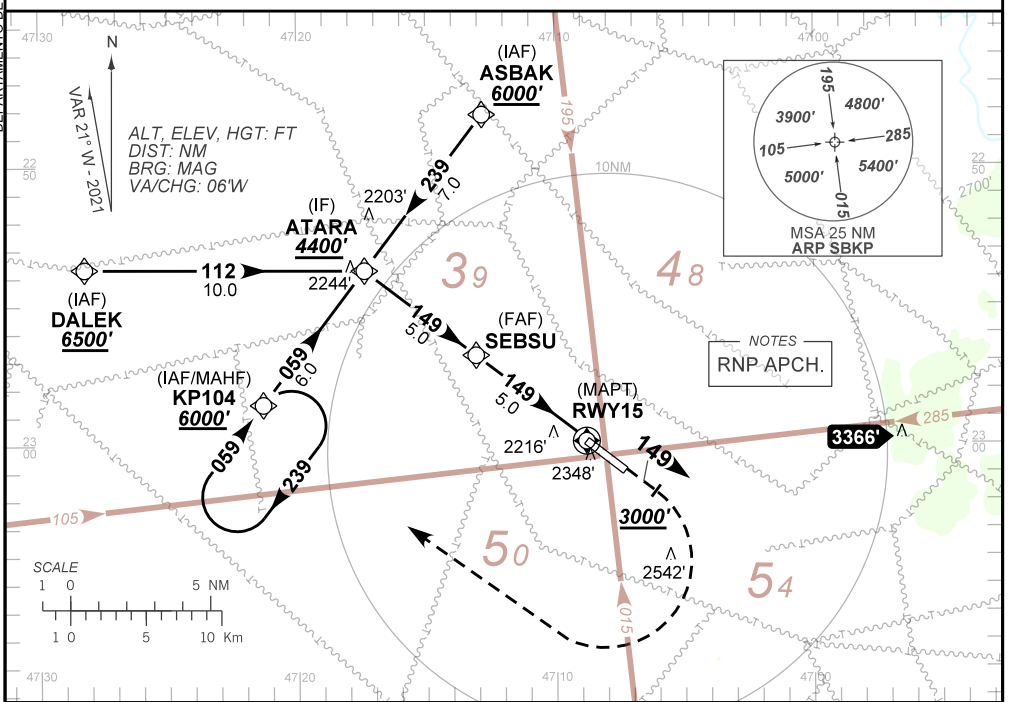
<b>D-ATIS</b> 127.825	<b>APP SÃO PAULO</b> 119.05 119.15 119.25 119.60 119.80 120.05 120.25 120.45 120.85 121.40 122.75 123.25 124.15	<b>TWR CAMPINAS</b> 118.25	<b>GNDC CAMPINAS</b> 121.90
--------------------------	---	-------------------------------	--------------------------------

<b>TEMP LNAV/VNAV</b> MIN -10° C / MAX 50° C	<b>FINAL CRS</b> 149°	<b>FAF:</b> 3790'	<b>LNAV / VNAV</b> DA / (OCH): <b>2527' / (388')</b>	<b>LNAV</b> MDA / (OCH): <b>2600' / (470')</b>
---	--------------------------	----------------------	---	---

APCH Perdida: Subir para **6000'**. Manter o rumo **149** até **3000'**. Após, curvar à DIREITA direto KP104 para espera.

Missed APCH: Climb to **6000'**. Maintain course **149** until **3000'**. After, turn RIGHT direct KP104 for holding.

DEPARTAMENTO DE CONTROLE DO ESPAÇO AÉREO



TO THR 15 (NM) 10.0 5.0 1.3 1.0 0.0

	SEBSU	4.0	3.0	2.0	1.3	RWY15	Ground Speed (KT)	090	110	130	150	170	190
	3790	3463	3144	2826	2600	ALT	FPM	500	600	700	800	900	NA
	1651	1324	1005	687	470	(HGT)	FAF-MAPT	NA					

STRAIGHT-IN	CAT	A	B	C	D	E
	DA / (OCH)	2527' / (388')				NA
LNAV/VNAV	ALS/NO ALS/ RVR ALS (m)	1100 / 1800 / NIL				
LNAV	MDA / (OCH)	2600' / (470')				
	ALS/NO ALS/RVR ALS (m)	800 / 1800 / NIL		1500 / 2200 / NIL		
CIRCLING	MDA / (OCH)	NA				
	VIS (m)					

CHANGES: ALT, HGT.