

**INSTRUMENT APPROACH
CHART (IAC)**

ITAITUBA / Itaituba (SBIH)

NDB Z RWY 06

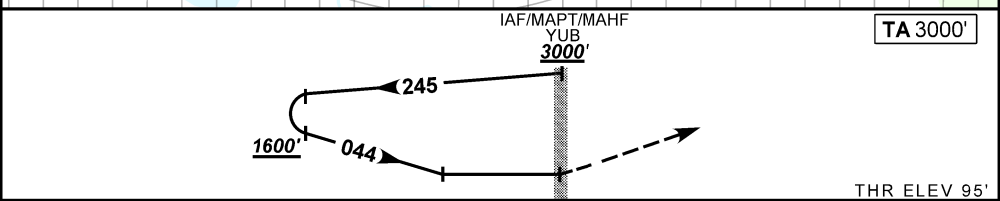
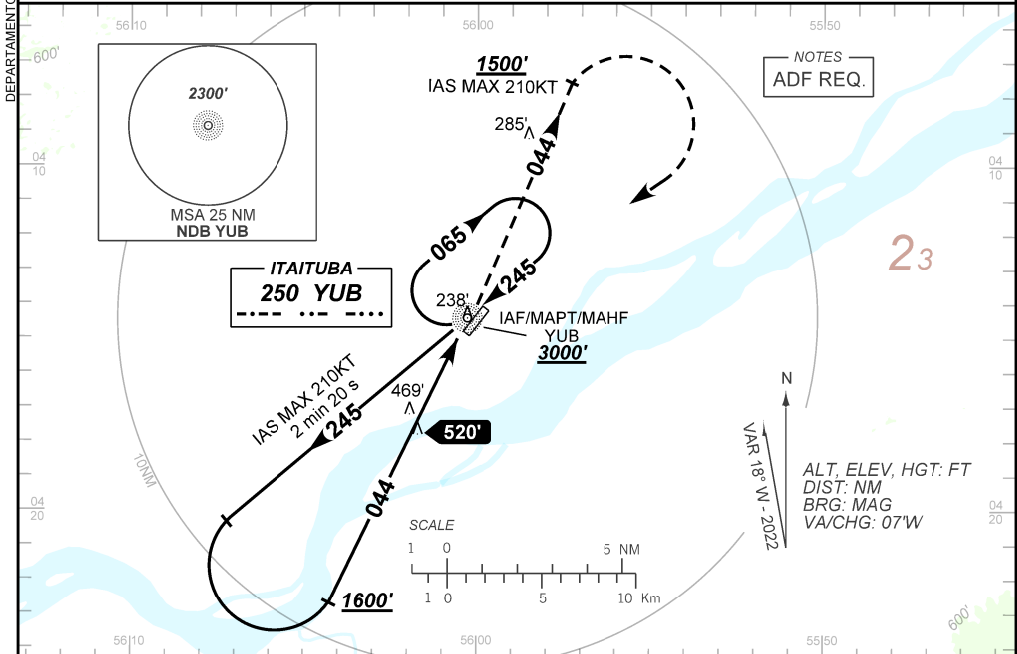
(CAT A, B, C)

AD ELEV: 102'

ATIS NIL		APP NIL		AFIS ITAITUBA 125.50		GNDC NIL	
NDB YUB 250 KHz		FINAL CRS 044°		NA		NDB MDA / (OCH): 820' / (730')	

APCH Perdida: 1) Subir para **3000'**. Manter QDR **044** do NDB YUB até cruzar **1500'**. Então, curvar à DIREITA, direto NDB YUB para espera.

Missed APCH: 1) Climb to **3000'**. Maintain **044** QDR YUB NDB until passing **1500'**. Then, turn **RIGHT** direct to YUB NDB for holding.



TO THR 06 (NM) THR ELEV 95'

NA	RWY06	KT	090	110	130	150	170	190
NA	ALT	FPM	650			NA		
NA	(HGT)	FAF-MAPT	NA					

STRAIGHT-IN	CAT	A	B	C	D	E
NDB	MDA / (OCH)	820' / (730')			NA	NA
	ALS/NO ALS/ RVR ALS (m)	NIL / 1600 / NIL		NIL / 3400 / NIL		
CIRCLING	MDA / (OCH)	NA				
	VIS (m)	NA				

CHANGES: AD ELEV. LAYOUT. RWY. THR ELEV. VAR.