

INSTRUMENT APPROACH  
CHART (IAC)

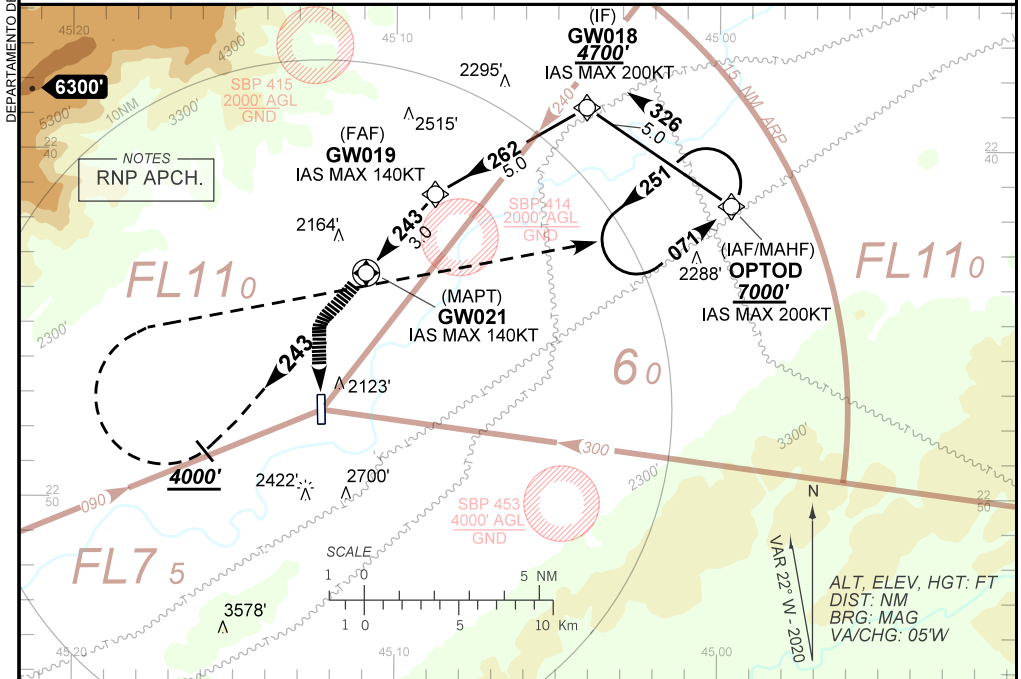
GUARATINGUETÁ / Guaratinguetá (SBGW)

AD ELEV: 1761'

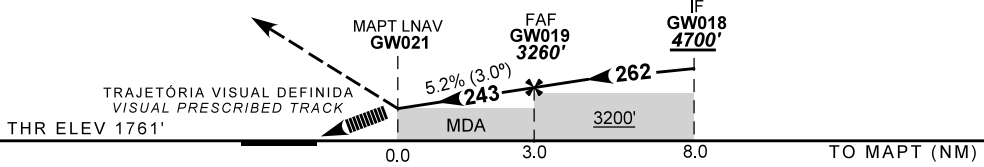
RNP A RWY 20

ATIS NIL	APP GUARÁ 120.15		TWR GUARÁ 118.15	GNDC NIL
N/A	FINAL CRS 243°	FAF: 3260'	N/A	N/A

APCH Perdida: 1) Subir para **7000'**. Manter rumo **243** até cruzar **4000'**. Então, curvar à DIREITA direto para OPTOD para espera. 2) Gradiente MNM 5.0% até 6000'. Após, 2.5%. 3) IAS MAX 180KT até OPTOD.  
Missed APCH: 1) Climb to **7000'**. Maintain course **243** until passing **4000'**. Then, turn RIGHT direct to OPTOD for holding. 2) MNM gradient 5.0% until 6000'. After, 2.5%. 3) IAS MAX 180KT until OPTOD.



TA 7000'



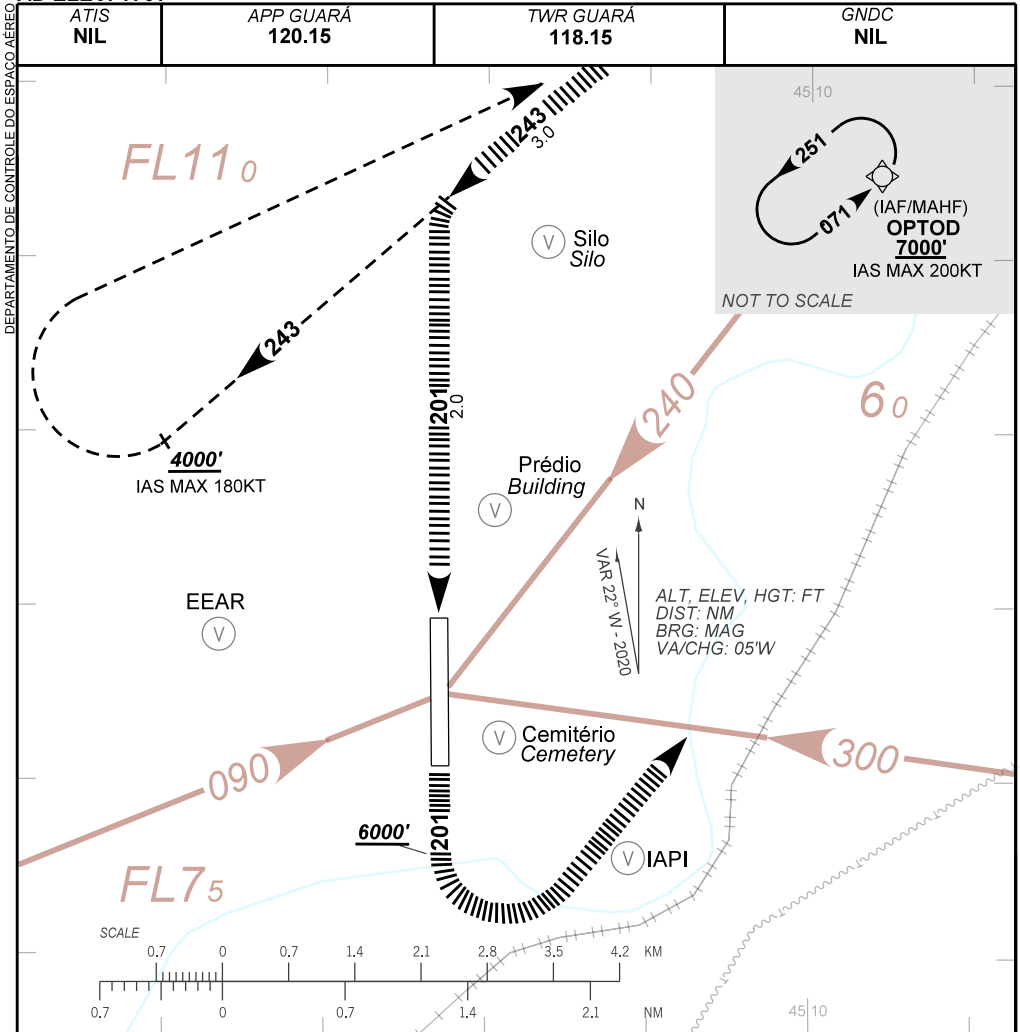
MAPT	GW021	1.0	2.0	GW019						
ALT	2400	2718	3036	3260						
(HGT)	640	957	1275	1499						
Ground Speed (KT)	090	110	130	150	170	190				
FPM	500	600	700	800	NA					
FAF-MAPT										

STRAIGHT-IN	CAT	A	B	C	D	E
LNAV	MDA / (OCH)					
	ALS/NO ALS/ RVR ALS (m)			NA		
CIRCLING	MDA / (OCH)		2400' / (640')			NA
	VIS (m)	1900	2800	3700		

CHANGES: EAC IDENT. LAYOUT.

AD ELEV: 1761'

RNP A RWY 20



**TRAJETÓRIA VISUAL DEFINIDA RWY 20  
VISUAL PRESCRIBED TRACK RWY 20**

1) O procedimento deverá ser autorizado pelo APP GUARÁ durante a aproximação final e aproximação perdida.

*Procedure must be authorized by GUARÁ APP on final and missed approach.*

2) O piloto deverá estar em contato visual e prover sua própria separação com as referências visuais:

Silo (S22 44.90, W45 11.62), Prédio (S22 46.44, W45 11.95) e a EEAR (S22:47.16; W045:13.66).

*The pilot should have visual contact and provide his own separation with the visual references: Silo (S22 44.90 W45 11.62), Building (S22 46.44, W45 11.95) and EEAR (S22:47.16, W45:13.66).*

3) Em caso de arremetida durante a manobra para circular: Subir imediatamente para 7000' no rumo 201.

Após passar 6000', voar direto OPTOD para espera.

*In case of go around during the circling maneuvering: Immediate climb to 7000' on course 201. After passing 6000', fly direct to OPTOD for holding*

4) Observar concentração de pássaros na vizinhança do aeródromo.

*Be aware to bird concentration in the vicinity of the aerodrome.*

5) Observar AIC sobre circulação visual na Terminal São Paulo. (REA Mike).

*See AIC about visual flight in São Paulo Terminal area. (MIKE REA).*