

STANDARD DEPARTURE CHART
INSTRUMENT (SID)

RIO DE JANEIRO / Galeão - Antônio Carlos Jobim, INTL (SBGL)

RWY 10/15

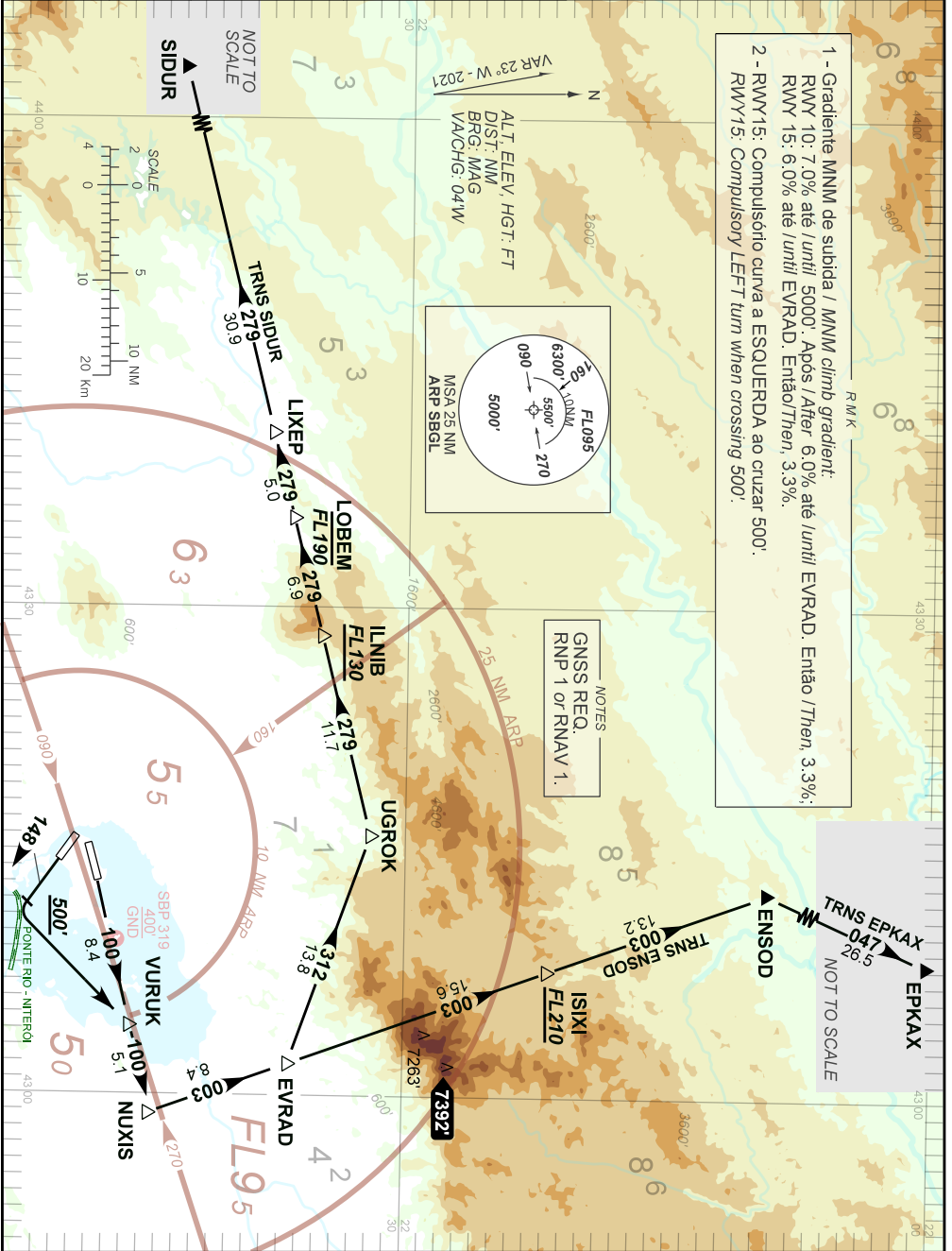
RNAV EVRAD 1A

AD ELEV: 28'

TA 7000'	ATIS 127.60	TWR GALEÃO 118.00 118.20	APP RIO 134.95 125.95 125.60 129.80 134.40	APP SÃO PAULO 120.85 129.00	ACC CURITIBA 124.00 125.35 128.25 133.40 133.60
----------	-------------	--------------------------	---	-----------------------------	--

DEPARTAMENTO DE CONTROLE DO ESPAÇO AEREO

CHANGES: EAC, FREQ, LAYOUT, RMK, VAR.



1 - Gradiente MNM de subida / MNM climb gradient:
RWY 10: 7.0% até / until 5000'. Após / After 6.0% até / until EVRAD. Então / Then, 3.3%.
RWY 15: 6.0% até / until EVRAD. Então / Then, 3.3%.
2 - RWY15: Compulsório curva a ESQUERDA ao cruzar 500'.
RWY15: Compulsory LEFT turn when crossing 500'.

NOTES
GNSS REQ.
RNP 1 or RNAV 1.

NOT TO SCALE