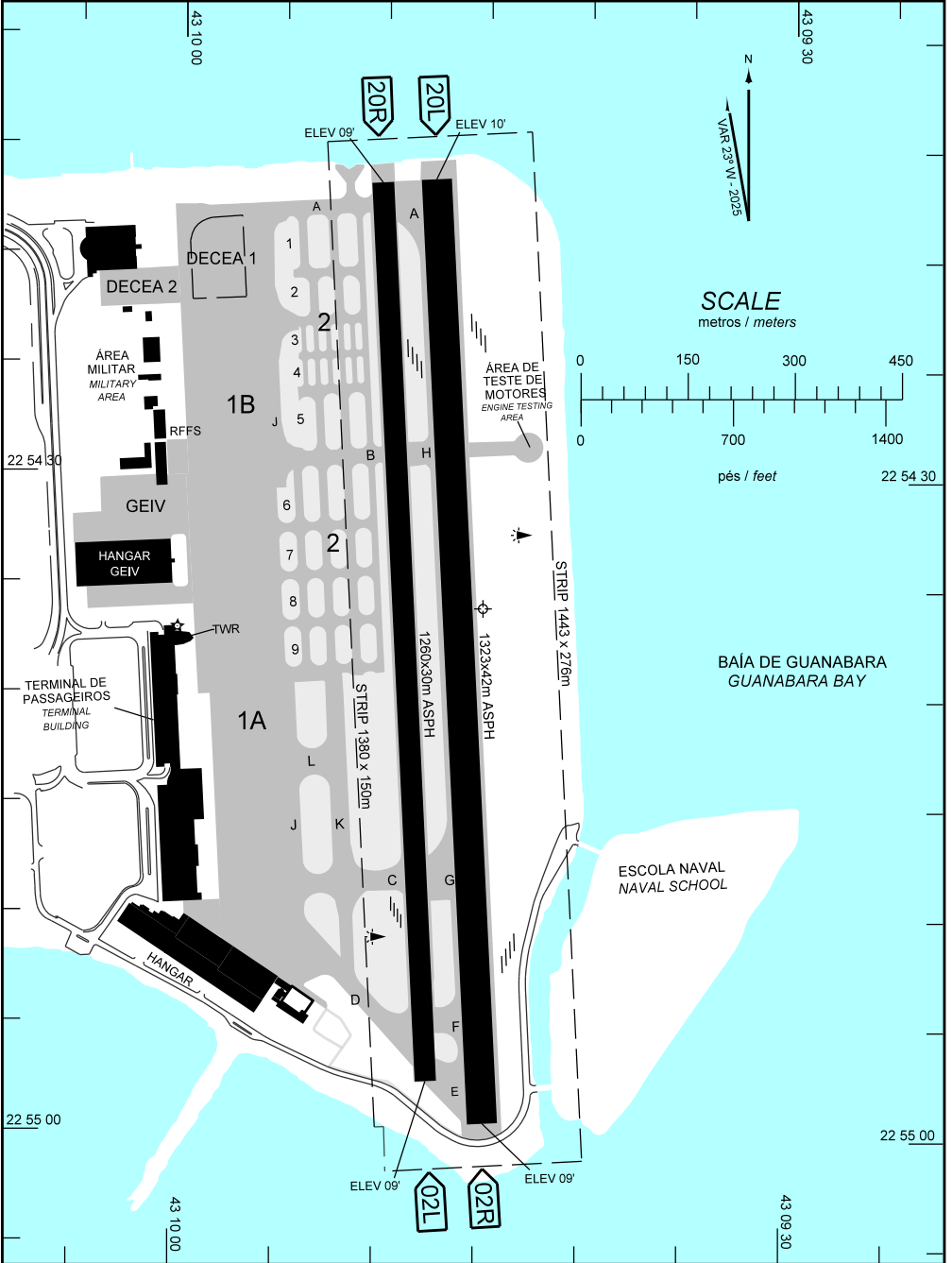


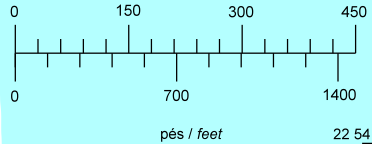
AD ELEV: 10'

ARP S22 54 36 W043 09 45

| | | | | |
|-------------------------|----------------------|-----------------------|-----------------------------|---------------------|
| D-ATIS 132.65 | DCL 121.05 | GNDC 121.70 | TWR 118.70 121.50 | APRON NIL |
|-------------------------|----------------------|-----------------------|-----------------------------|---------------------|



SCALE
metros / meters



BAÍA DE GUANABARA
GUANABARA BAY

ESCOLA NAVAL
NAVAL SCHOOL

CHANGES: ASIMET.

ADC - SBRJ: INFORMAÇÕES COMPLEMENTARES / COMPLEMENTARY INFORMATION

| CARACTERÍSTICAS FÍSICAS / PHYSICAL CHARACTERISTICS | | | | | | | | | | | |
|--|---------|--------------|-----|-------------------------------|-----|-----|------------------|------------|------------------------------------|-----|--|
| PISTA RUNWAY | | | | DIMENSÕES(m) DIMENSIONS(m) | | | | PCN | TIPO DE SUPERFÍCIE SURFACE KIND | | |
| RWY | BRG MAG | Tipo Type | RCD | RWY | SWY | CWY | STRIP | RWY | RWY | SWY | |
| a | b | c | d | e | f | g | h | i | j | k | |
| 02R | 020 | NPA | 4C | 1323x42 | | | 1443 x 276 | 65/F/A/W/T | ASPH | | |
| 20L | 200 | NPA | 4C | | | | | | | | |
| 02L | 020 | NINST | 3C | 1260x30 | | | 1380 x 150 | 39/F/B/X/T | ASPH | | |
| 20R | 200 | NINST | 3C | | | | | | | | |

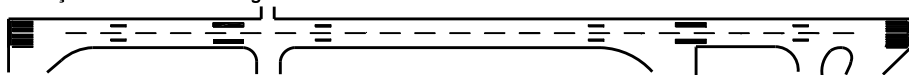
**DISTÂNCIAS DECLARADAS, AUXÍLIOS VISUAIS E COORDENADAS DAS CABECEIRAS
DECLARED DISTANCES, VISUAL AIDS AND THRESHOLD COORDINATES**

| RWY | TORA(m) | TODA(m) | ASDA(m) | LDA(m) | AUXÍLIOS / AIDS | ALTURA GEOIDAL(m) GEOID HEIGHT(m) | COORDENADAS COORDINATES |
|-----|---------|---------|---------|--------|-----------------|--------------------------------------|----------------------------|
| 02R | 1323 | 1323 | 1323 | 1323 | PAPI (3.23°) | -5,51 | S22 54 59 W043 09 45 |
| 20L | 1323 | 1323 | 1323 | 1323 | PAPI (3.12°) | -5,50 | S22 54 17 W043 09 48 |
| 02L | 1260 | 1260 | 1260 | 1260 | PAPI (3.23°) | -5,51 | S22 54 57 W043 09 48 |
| 20R | 1260 | 1260 | 1260 | 1260 | PAPI (3.12°) | -5,50 | S22 54 17 W043 09 50 |

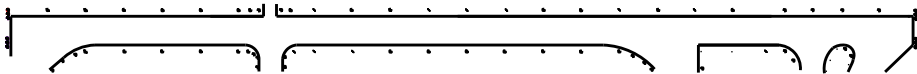
SERVICO DE SALVAMENTO E CONTRAINCÊNDIO / RESCUE AND FIRE FIGHTING SERVICE: RFFS REQ - 7

RWY 20L/02R

Sinalização horizontal / Marking Aids

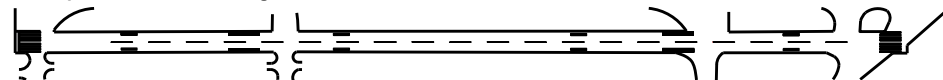


Auxílios luminosos / Lighting Aids

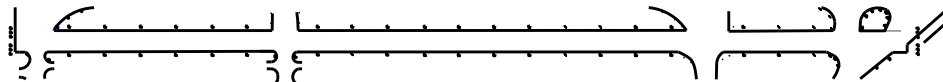


RWY 20R/02L

Sinalização horizontal / Marking Aids



Auxílios luminosos / Lighting Aids



RMK:

- 1) MEHT: PAPI - RWY 02L - 41FT. O EQUIPAMENTO ESTÁ RESTRITO PARA OPERAÇÃO DENTRO DE 1NM DA CABECEIRA DEVIDO ELEVACÃO DO PAÓ DE AÇÚCAR.
RWY 02L - 41FT. THE EQUIPMENT IS RESTRICTED TO OPERATION WITHIN 1NM FROM THE THRESHOLD DUE TO THE SUGAR LOAF ELEVATION.
- RWY 02R - 40FT. UTILIZAÇÃO AUTORIZADA SOMENTE DENTRO DE 1,8 KM (1NM) A PARTIR DA CABECEIRA DA PISTA 02R.
RWY 02R - 40FT. USE AUTHORIZED ONLY WITHIN 1.8 KM (1NM) FROM THE RWY 02R THRESHOLD.
- RWY 20 L - 37.40FT.
- RWY 20R - 37FT.

CHANGES: AIS/MET.