

**INSTRUMENT APPROACH
CHART (IAC)**

CAMPO GRANDE / Campo Grande, INTL (SBCG)

AD ELEV: 1834'

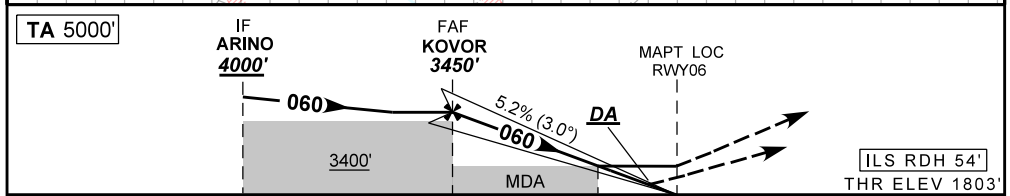
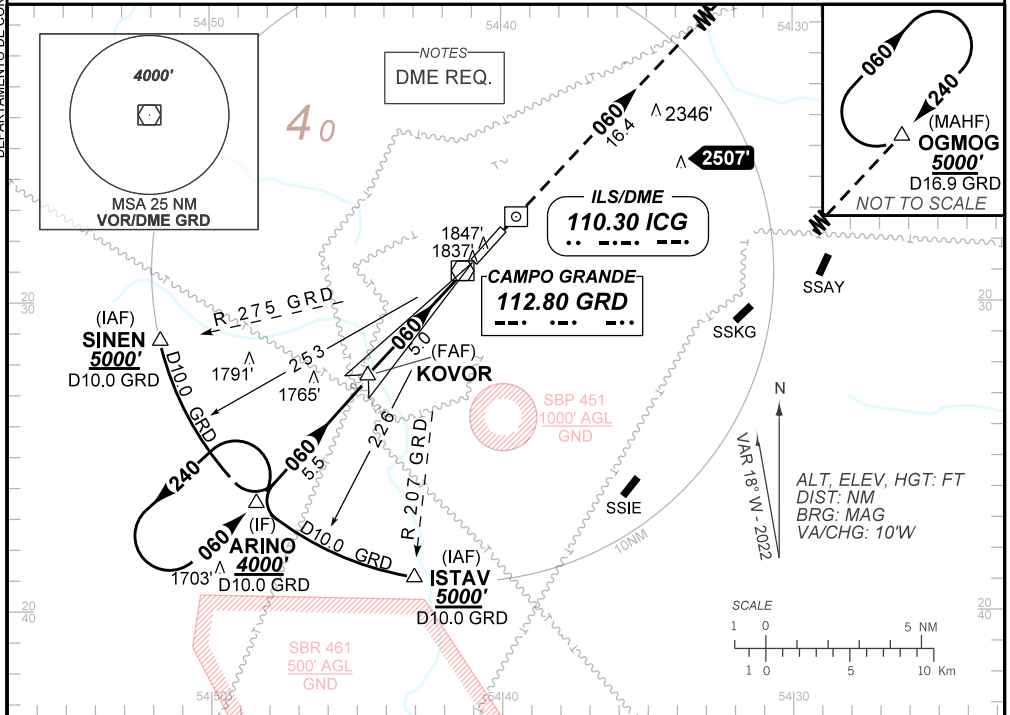
ILS Y or LOC Y RWY 06

D-ATIS 127.60	APP CAMPO GRANDE 119.35 119.65 120.20 121.00	TWR CAMPO GRANDE 118.10	GNDCL CAMPO GRANDE 121.90
-------------------------	--	-----------------------------------	-------------------------------------

LOC ICG 110.30 MHz	FINAL CRS 060°	FAF: 3450'	CAT I DA / (OCH): REF TO MNM	LOC MDA / (OCH): 2180' / (380')
------------------------------	--------------------------	----------------------	--	---

APCH Perdida: Subir para **5000'**. Manter rumo **060** até OGMOG para espera.
Missed APCH: Climb to **5000'**. Maintain course **060** until OGMOG for holding.

DEPARTAMENTO DE CONTROLE DO ESPAÇO AÉREO



TO THR 06 (NM)	10.5	5.0	1.0	0.0
TO ICG (DME)	12.1	6.6	2.6	1.6

KAVOR	4.0	3.0	2.0	1.0	RWY06	Ground Speed (KT)	090	110	130	150	170	190
3450	3131	2812	2494	2180	ALT	FPM	500	600	700	800	900	1000
1647	1328	1009	691	380	(HGT)	FAF-MAPT	NA					

STRAIGHT-IN	CAT	A	B	C	D	E
	DA / (OCH)	2003' / (200')				2115' / (312')
LOC	MDA / (OCH)	2180' / (380')				
	ALS/NO ALS/ RVR ALS (m)	1200 / 1600 / 1100				1300 / 1700 / 1100
CIRCLING	MDA / (OCH)	NA				
	VIS (m)	NA				

CHANGES: F. PROC. VAR.