

STANDARD DEPARTURE CHART  
INSTRUMENT (SID)

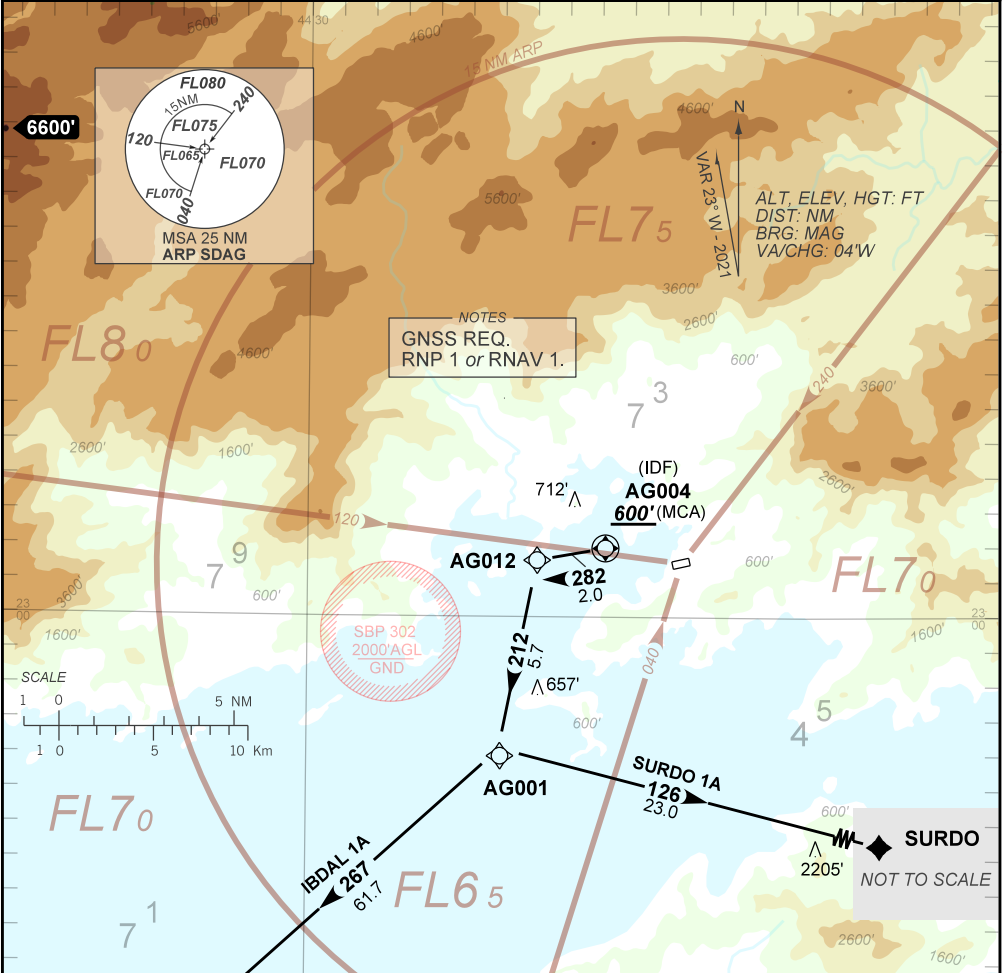
ANGRA DOS REIS / Angra dos Reis (SDAG)

AD ELEV: 10'

RNAV IBDAL 1A - SURDO 1A

TA 5000'	FCA 125.275	APP RIO 119.00 119.35 120.55 126.20 128.90 129.20 129.80 133.30	APP SÃO PAULO 134.90 125.60 121.35 129.75 123.90 124.70 119.15	ACC NIL
----------	----------------	---	--	------------

DEPARTAMENTO DE CONTROLE DO ESPAÇO AÉREO



NOTES  
GNSS REQ.  
RNP 1 or RNAV 1.

SBP 302  
2000'AGL  
GND



- 1 - Grad MNM 6% até 4000', após 5%.  
MNM gradient 6% until passing 4000', after 5%.
- 2 - Responsabilidade do piloto em comando a separação com obstáculos e terreno até AG004.  
Responsability of the pilot in command for separation with obstacles and terrain up to AG004.
- 3 - Manter regras de voo visual (VFR) até AG004.  
Maintain visual flight rules (VFR) up to AG004.
- 4 - Contato obrigatório na FCA. Proibido iniciar decolagem enquanto houver outro tráfego executando Procedimento de aproximação.  
Aircraft must keep two contact FCA. Prohibited start taking off while other ACFT is approaching.
- 5 - CAT H.

Prossiga VFR para AG004  
Proceed VFR to AG004

282-2.0 (IDF)  
AG004  
600'(MCA) NOT TO SCALE

CHANGES: FREQ. IDENT. PROC. RMK.