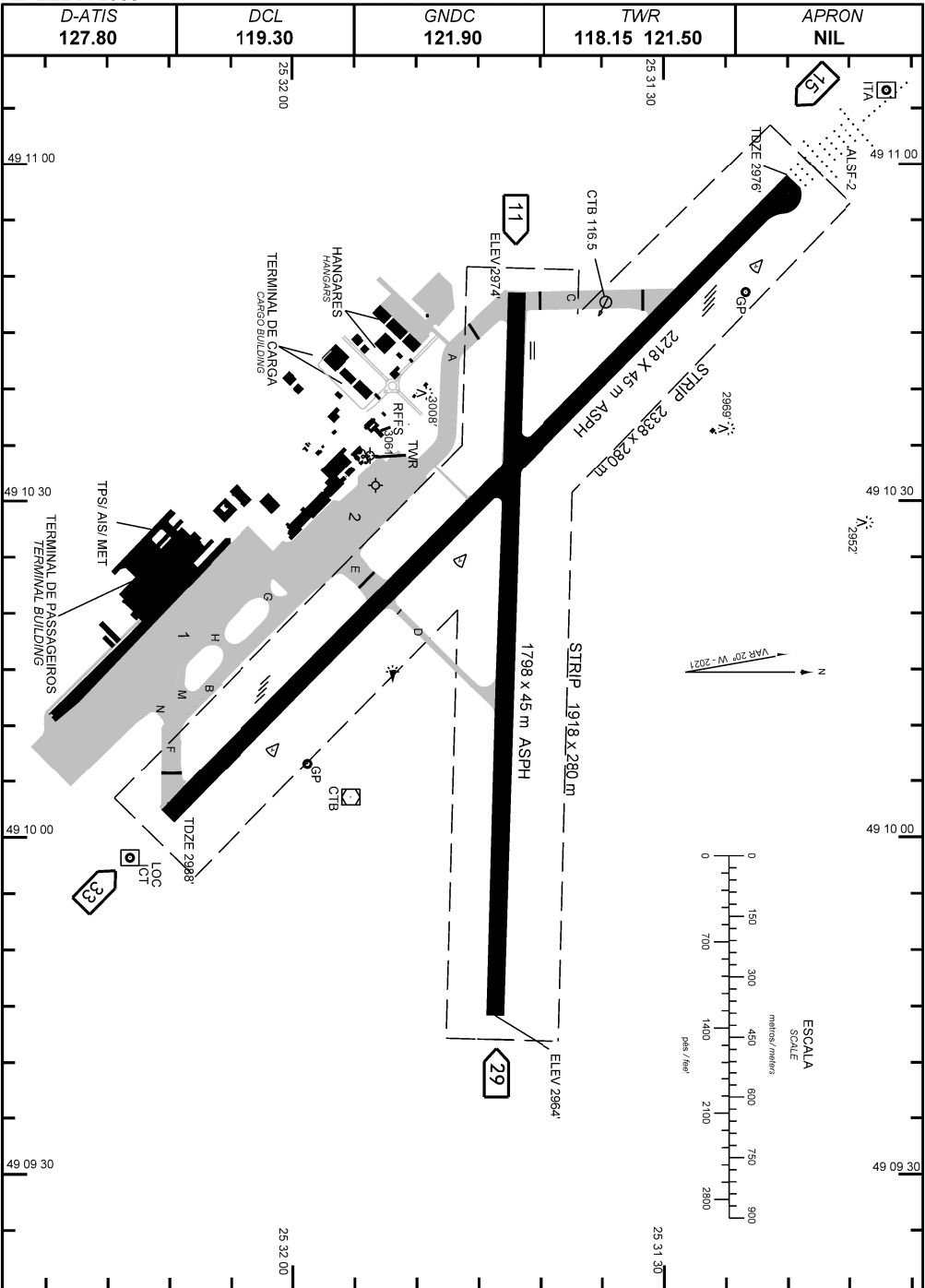


AD ELEV: 2989'

ARP S25 31 54 W049 10 34

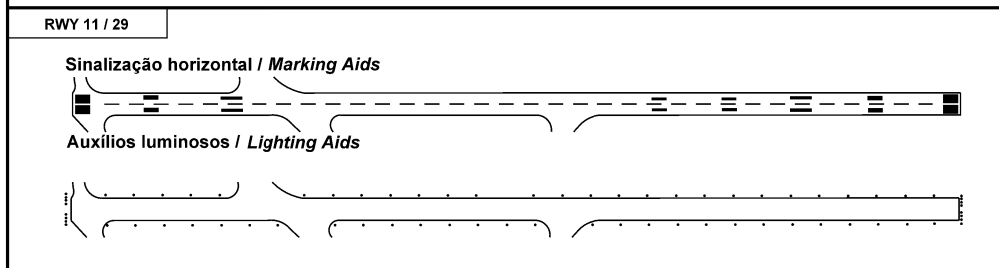
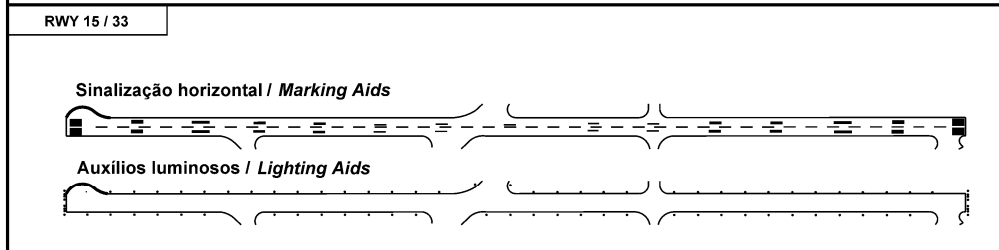


**ADC - SBCT: INFORMAÇÕES COMPLEMENTARES / COMPLEMENTARY INFORMATION**

CARACTERÍSTICAS FÍSICAS / PHYSICAL CHARACTERISTICS											
PISTA RUNWAY				DIMENSÕES(m) DIMENSIONS(m)				PCN	TIPO DE SUPERFÍCIE SURFACE KIND		
RWY	BRG MAG	Tipo Type	RCD	RWY	SWY	CWY	STRIP	RWY	RWY	SWY	
a	b	c	d	e	f	g	h	i	j	k	
15	155	PA-2	4E	2218x45			2338 x 280	42/F/A/X/T	ASPH		
33	335	PA-1	4E								
11	112	NPA	4E	1798X45			1918 x 280	33/F/A/X/T	ASPH		
29	292	NPA	4E								

DISTÂNCIAS DECLARADAS, AUXÍLIOS VISUAIS E COORDENADAS DAS CABECEIRAS DECLARED DISTANCES, VISUAL AIDS AND THRESHOLD COORDINATES								
RWY	TORA(m)	TODA(m)	ASDA(m)	LDA(m)	AUXÍLIOS / AIDS	ALTURA GEOIDAL(m) GEOID HEIGHT(m)	COORDENADAS COORDINATES	
15	2218	2218	2218	2218	PAPI(2.98°)/ ALSF-2	3,54	S25 31 20 W049 10 58	
33	2218	2218	2218	2218	PAPI	3,48	S25 32 10 W049 10 02	
11	1798	1798	1798	1798	AVASIS	3,53	S25 31 42 W049 10 49	
29	1798	1798	1798	1798		3,46	S25 31 44 W049 09 44	

**SERVIÇO DE SALVAMENTO E CONTRAINCÊNDIO / RESCUE AND FIRE FIGHTING SERVICE: RFFS REQ - 9**



**RMK:**

- 1) MEHT: PAPI - RWY 15 : 61FT
- PAPI - RWY 33: 64FT
- AVASIS - RWY 11: 37FT

CHANGES: PAPI