

**INSTRUMENT APPROACH
CHART (IAC)**

CURITIBA / Afonso Pena, INTL (SBCT)

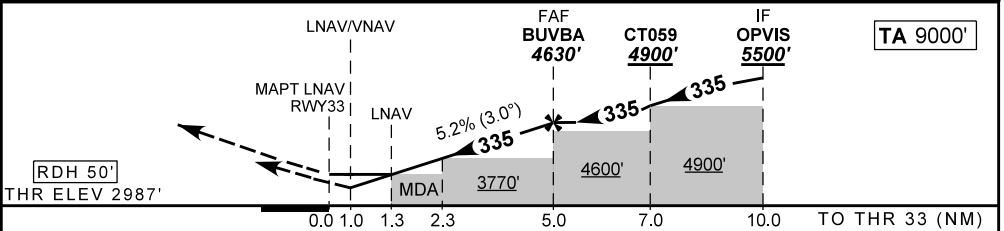
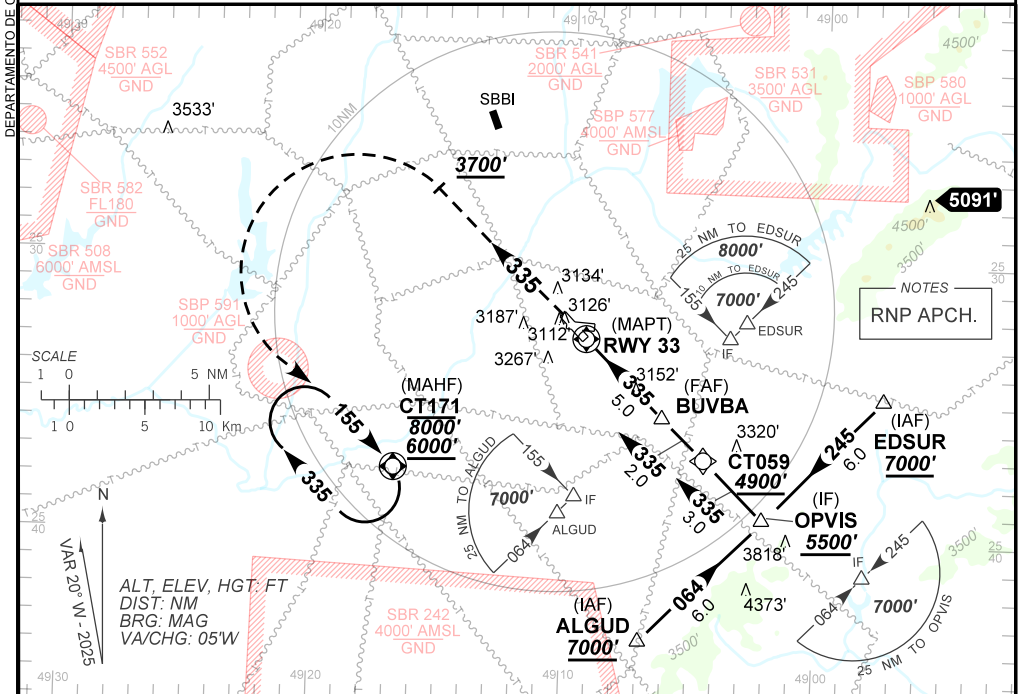
AD ELEV: 2989'

RNP Y RWY 33

D-ATIS 127.80	APP CURITIBA 119.70 119.95 120.65 120.95 129.55 133.15			TWR CURITIBA 118.15	GNDCL CURITIBA 121.90
TEMP LNAV/VNAV MIN -10°C / MAX 45°C	FINAL CRS 335°	FAF: 4630'	LNAV/VNAV DA / (OCH): 3343' / (356')	LNAV MDA / (OCH): 3430' / (450')	

APCH Perdida: Subir para **6000'** no rumo **335** até **3700'**. Após, curvar à ESQUERDA direto CT171 para espera.

Missed APCH: Climb to **6000'** on course **335** until **3700'**. After, turn LEFT direct CT171 for holding.



RWY33	1,3	2,3	3,0	4,0	BUVBBA	Ground Speed (KT)	090	110	130	150	170	190
ALT	3430	3770	3992	4311	4630	FPM	500	600	700	800	900	NA
(HGT)	450	783	1005	1324	1643	FAF-MAPT	NIL					

STRAIGHT-IN	CAT	A	B	C	D	E	
	DA / (OCH)	3343' / (356')					NA
LNAV/VNAV	ALS/NO ALS/ RVR ALS (m)	NIL / 1600 / NIL					
	MDA / (OCH)	3430' / (450')					
LNAV	ALS/NO ALS/ RVR ALS (m)	NIL / 1600 / NIL			NIL / 2100 / NIL		
	CIRCLING	MDA / (OCH)	NA				
	VIS (m)						

CHANGES: EAC.