

**INSTRUMENT APPROACH
CHART (IAC)**

COARI / Urucu (SBUY)

RNP Z RWY 09

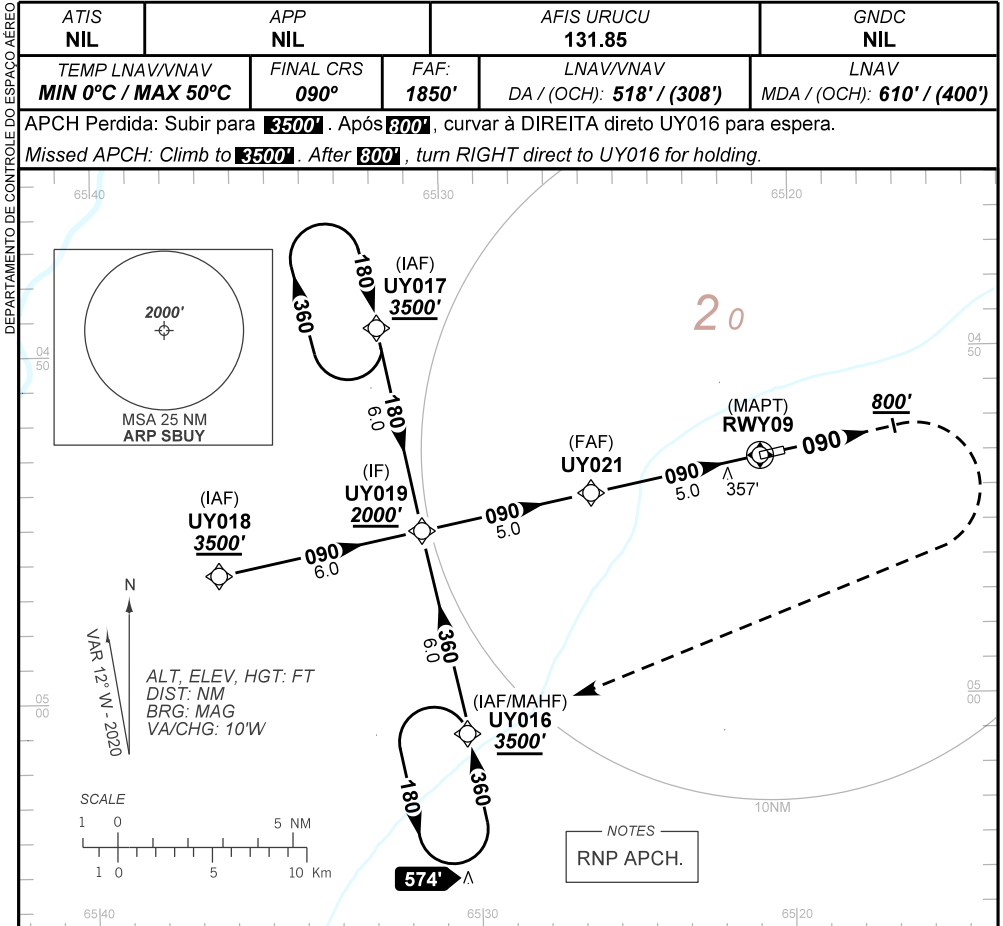
(CAT A, B, C)

AD ELEV: 210'

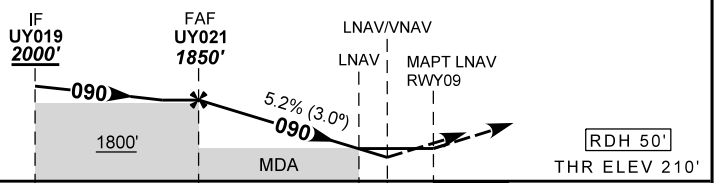
ATIS NIL	APP NIL	AFIS URUCU 131.85		GNDC NIL
TEMP LNAV/VNAV MIN 0°C / MAX 50°C	FINAL CRS 090°	FAF: 1850'	LNAV/VNAV DA / (OCH): 518' / (308')	LNAV MDA / (OCH): 610' / (400')

APCH Perdida: Subir para **3500'**. Após **800'**, curvar à DIREITA direto UY016 para espera.

Missed APCH: Climb to **3500'**. After **800'**, turn RIGHT direct to UY016 for holding.



TA 4000'



TO THR 09 (NM) 10.0 5.0 1.1 0.8 0.0

	UY021	4.0	3.0	2.0	1.1	RWY09	Ground Speed (KT)	090	110	130	150	170	190
	1850	1534	1215	897	610	ALT	FPM	500	600	700	800	NA	NA
	1640	1324	1005	687	400	(HGT)	FAF-MAPT	NA					

STRAIGHT-IN	CAT	A	B	C	D	E
	DA / OCH	518' / (308')				
	ALS/NO ALS/ RVR ALS (m)	NIL / 1400 / NIL				
	MDA / OCH	610' / (400')				
LNAV	ALS/NO ALS/RVR ALS (m)	NIL / 1600 / NIL			NIL / 1800 / NIL	
	MDA / OCH	NA				
CIRCLING	MDA / OCH	NA				
	VIS (m)	NA				

AIRAC AMDT 2213A1 29 DEC 22

SBUY_IAC_00D 1/1
IAC RNP Z RWY 09

CHANGES: IDENT, LAYOUT.