

**INSTRUMENT APPROACH  
CHART (IAC)**

**CURITIBA / Afonso Pena, INTL (SBCT)**

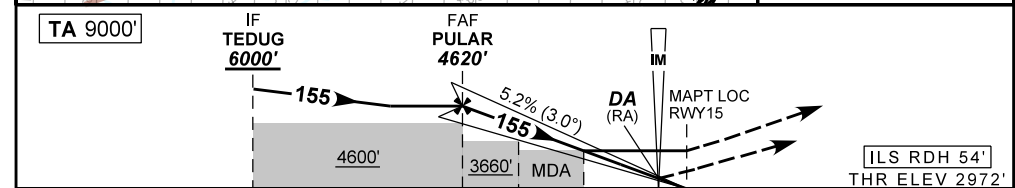
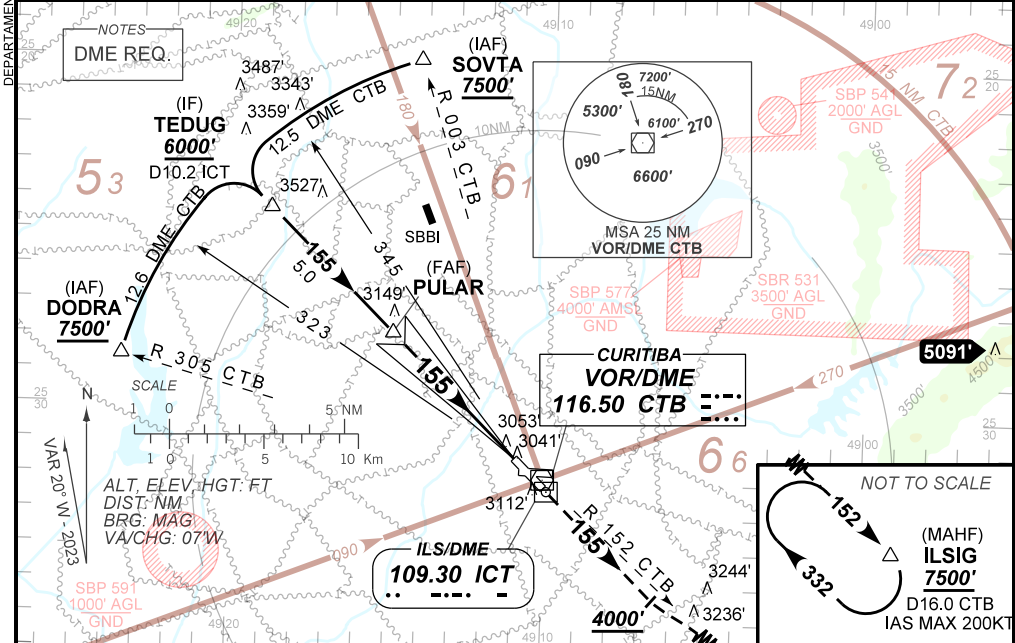
**AD ELEV: 2989'**

**ILS Z or LOC Z CAT I & II RWY 15**

D-ATIS <b>127.80</b>	APP CURITIBA <b>119.70 119.95 120.65 120.95 129.55 133.15</b>			TWR CURITIBA <b>118.15</b>	GNDC CURITIBA <b>121.90</b>
ILS/DME ICT <b>109.30 MHz</b>	FINAL CRS <b>155°</b>	FAF: <b>4620'</b>	CAT I & CAT II DA / (OCH): <b>REFER TO MNM</b>		LOC MDA / (OCH): <b>3340' / (370')</b>

APCH Perdida: Subir para **7500'**. Manter proa **155** até **4000'**. Após, curvar à ESQUERDA para interceptar RDL **152** do VOR CTB até ILSIG para espera.  
 Missed APCH: Climb to **7500'**. Maintain heading **155** until **4000'**. After, turn LEFT to intercept **152** RDL CTB VOR to ILSIG for holding.

RMK: (\*)VIS RVR ALS 550m para APCH utilizando Diretor de Voo, Piloto Automático ou Head-Up Display (HUD).  
 (\*)VIS RVR ALS 550m for APCH using a Flight Director, Autopilot or Head-Up Display (HUD).



TO THR 15 (NM)	10.0	5.0	2.0	1.0	0.2	0.0
TO ICT (DME)	10.2	5.2	2.2	1.2	0.4	0.2

	PULAR	4.0	3.0	2.0	1.0	RWY 15	Ground Speed (KT)	090	110	130	150	170	190
	4620	4300	3981	3663	3340	ALT	FPM	500	600	700	800	900	NA
	1648	1328	1009	691	370	(HGT)	FAF-MAPT	NA					

STRAIGHT-IN	CAT	A	B	C	D	E
CAT II	DA / (OCH) / RA	3079' / (107') / 110'				
	ALS/NO ALS/ RVR ALS (m)	NIL / NIL / 350				
CAT I	DA / (OCH)	3172' / (200')				
	ALS/NO ALS/ RVR ALS (m)	800 / 1200 / 700(*)				
LOC	MDA / (OCH)	3340' / (370')				
	ALS/NO ALS/ RVR ALS (m)	800 / 1600 / 700		1000 / 1700 / 1000		

DEPARTAMENTO DE CONTROLE DO ESPAÇO AÉREO

CHANGES: NEW CHART.