

**INSTRUMENT APPROACH
CHART (IAC)**

CURITIBA / Afonso Pena, INTL (SBCT)

AD ELEV: 2989'

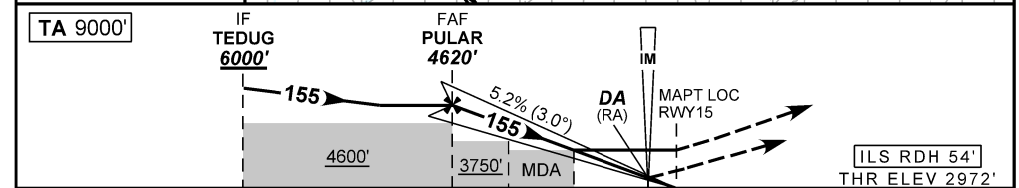
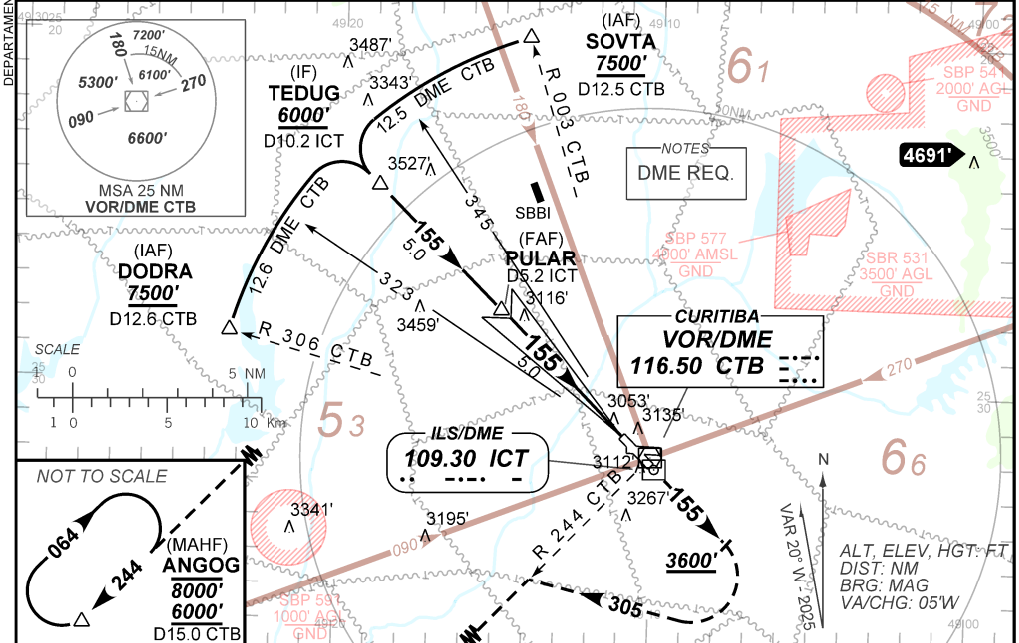
ILS Z or LOC Z CAT I & II RWY 15

D-ATIS 127.80	APP CURITIBA 119.70 119.95 120.65 120.95 129.55 133.15			TWR CURITIBA 118.15	GND: CURITIBA 121.90
ILS/DME ICT 109.30 MHz	FINAL CRS 155°	FAF: 4620'	CAT I & CAT II DA / (OCH): REFER TO MNM		LOC MDA / (OCH): 3340' / (370')

APCH Perdida: Subir para **6000'** na proa **155** até **3600'**. Após, curvar à DIREITA na proa **305** para interceptar RDL **244** VOR CTB até ANGOG para espera.

Missed APCH: Climb to **6000'** on heading **155** until **3600'**. After, turn RIGHT on heading **305** to intercept RDL **244** CTB VOR until ANGOG for holding.

RMK: (*)VIS RVR ALS 550m para APCH utilizando Diretor de Voo, Piloto Automático ou Head-Up Display (HUD).
(*)VIS RVR ALS 550m for APCH using a Flight Director, Autopilot or Head-Up Display (HUD).



TO THR 15 (NM)	10.0	5.0	2.3	1.0	0.2	0.0
TO ICT (DME)	10.2	5.2	2.5	1.2	0.4	0.2

	PULAR	4.0	3.0	2.3	1.0	RWY15	Ground Speed (KT)	090	110	130	150	170	190
		4620	4300	3981	3759	3340	FPM	500	600	700	800	900	NA
		1648	1328	1009	787	370	FAF-MAPT	NA					

STRAIGHT-IN	CAT	A	B	C	D	E
CAT II	DA / (OCH) / RA	3072' / (100') / 100'				
	ALS/NO ALS/ RVR ALS (m)	NIL / NIL / 350				
CAT I	DA / (OCH)	3172' / (200')				
	ALS/NO ALS/ RVR ALS (m)	800 / 1200 / 700(*)				
LOC	MDA / (OCH)	3340' / (370')				
	ALS/NO ALS/ RVR ALS (m)	800 / 1600 / 700	1000 / 1700 / 1000			NA

DEPARTAMENTO DE CONTROLE DO ESPAÇO AÉREO

CHANGES: MNM, OPR