

INSTRUMENT APPROACH BELO HORIZONTE / Pampulha - Carlos Drummond de Andrade (SBBH)
CHART (IAC)

RNP A RWY 31
 (CAT A, B, C)

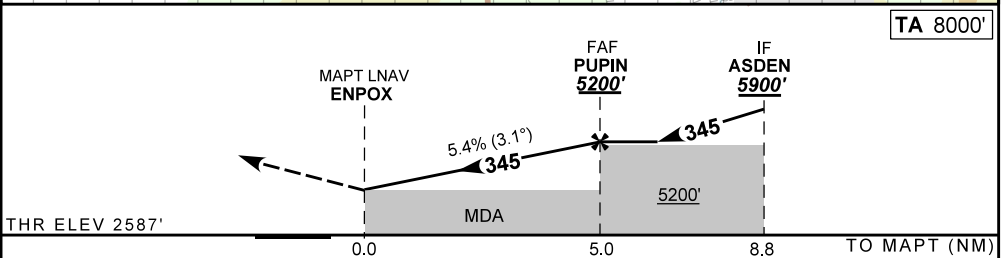
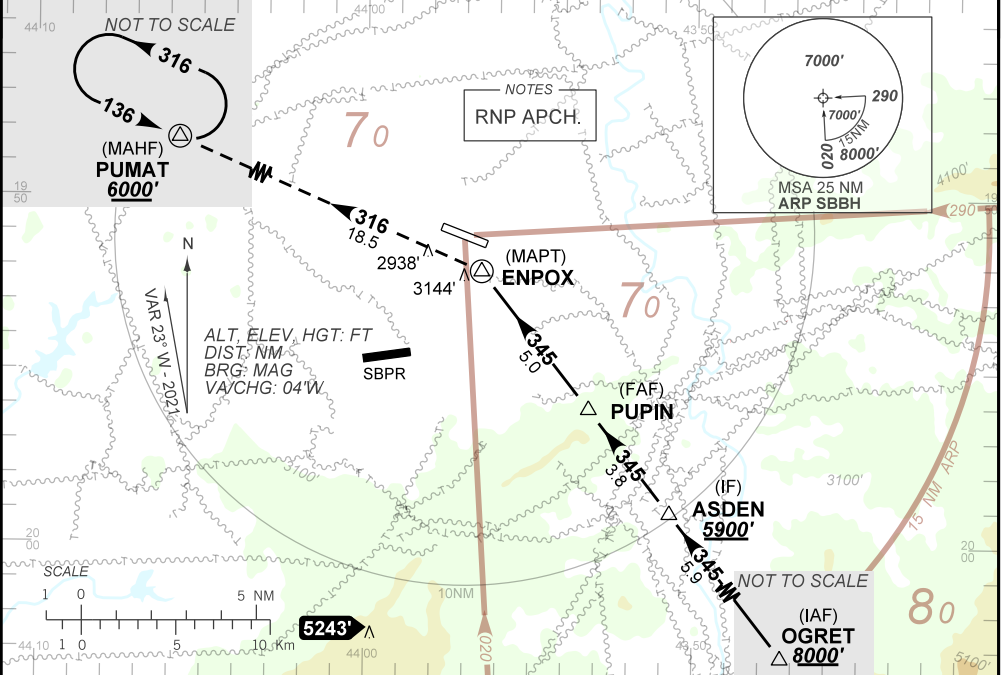
AD ELEV: 2589'

ATIS 127.45	APP BELO HORIZONTE 119.10 119.30 119.65 120.20 128.55 129.10 129.40	TWR BELO HORIZONTE 118.00	GNDC BELO HORIZONTE 121.60
-----------------------	--	-------------------------------------	--------------------------------------

APCH Perdida: Subir para **6000'**. Após, curva à **ESQUERDA** no rumo **316** até PUMAT para espera.
 Missed APCH: Climb to **6000'**. After, turn **LEFT** heading **316** until PUMAT for holding.

RMK: Pouso na RWY 31: Circule pelo setor Norte do aeródromo.
 Landing at RWY 31: Circle by airdrome's North sector.

DEPARTAMENTO DE CONTROLE DO ESPAÇO AÉREO



MAPT	1.0	2.0	3.0	4.0	PUPIN
ALT	3888	4207	4525	4844	5200
(HGT)	1299	1618	1936	2255	2611

Ground Speed (KT)	090	110	130	150	170	190
FPM	500	600	700	800	NA	NA
FAF-MAPT	NA					

STRAIGHT-IN	CAT	A	B	C	D	E
	MDA / OCH	NA				
LNAV	ALS/NO ALS/ RVR ALS (m)	NA				
CIRCLING	MDA / (OCH)	3570' / (990')				NA
	VIS (m)	3700'				

CHANGES: LAYOUT.