

**INSTRUMENT APPROACH CHART (IAC)**

**SÃO PAULO / Guarulhos - Gov. André Franco Montoro, INTL (SBGR)**

**RNP T RWY 09L**

**AD ELEV: 2461'**

D-ATIS <b>127.75</b>	APP SÃO PAULO <b>129.75 119.15 120.45 120.85 133.85</b>	TWR GUARULHOS <b>118.40 132.75 135.20</b>	GNDC GUARULHOS <b>121.70 126.90</b>
-------------------------	--	--	--

TEMP LNAV/VNAV <b>MIN -10°C / MAX 50°C</b>	FINAL CRS <b>095°</b>	FAF: <b>4080'</b>	LNAV/VNAV DA / (OCH): <b>2891' / (446')</b>	LNAV MDA / (OCH): <b>2920' / (480')</b>
---	--------------------------	----------------------	--	--

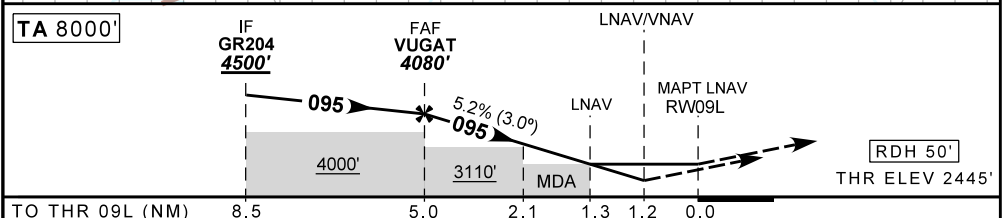
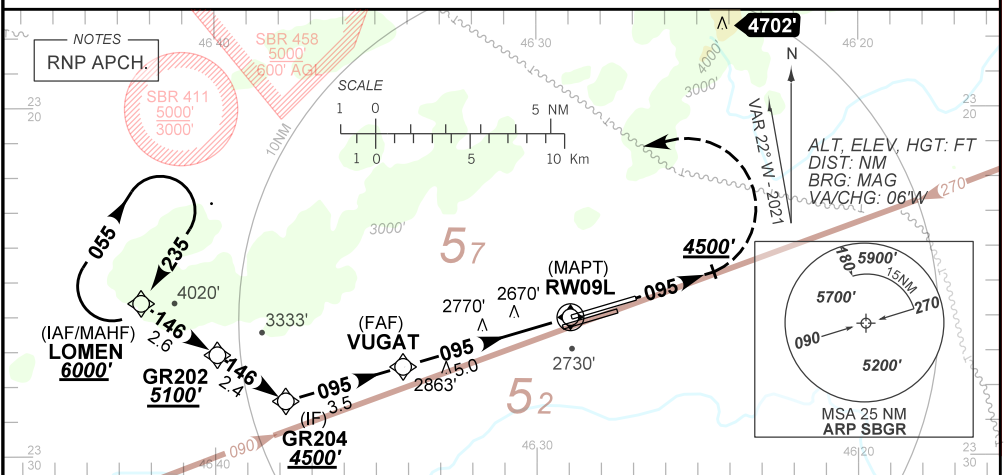
APCH Perdida: Subir para **6000'**. Manter rumo **095** até cruzar **4500'**. Após, curvar à ESQUERDA direto LOMEN para espera.

Missed APCH: Climb to **6000'**. Maintain course **095** until passing **4500'**. Then, turn LEFT direct LOMEN for holding.

RMK: NIL.

ARREMETIDA VISUAL RWY 09R: Subir para **6000'**. Manter proa **095** até **3300'**. Após, curvar à DIREITA na proa **140** e aguardar instruções ATC.

VISUAL GO-AROUND RWY 09R: Climb to **6000'**. Maintain heading **095** until **3300'**. After, turn RIGHT on heading **140** and expect ATC instructions.



	VUGAT	4.0	3.0	2.0	1.2	RW09L	KT	90	110	130	150	170	190
	4080	3769	3451	3132	2891	ALT	FPM	500	600	700	800	900	1000
	1635	1324	1006	687	446	(HGT)	FAF-MAPT	NA					

STRAIGHT-IN	CAT	A	B	C	D	E
LNAV/VNAV	DA / (OCH)	<b>2891' / (446')</b>				NA
	ALS/NO ALS/ RVR ALS (m)	1400 / 2100 / NIL				
LNAV	MDA / (OCH)	<b>2920' / (480')</b>				
	ALS/NO ALS/ RVR ALS (m)	1400 / 2100 / NIL		1500 / 2200 / NIL		
CIRCLING	MDA / (OCH)	NA				
	VIS (m)	NA				

DEPARTAMENTO DE CONTROLE DO ESPAÇO AÉREO

CHANGES: NEW CHART.