

INSTRUMENT APPROACH  
CHART (IAC)

SANTA ROSA DO PURUS/ Santa Rosa do Purus (SSRA)

RNP RWY 36

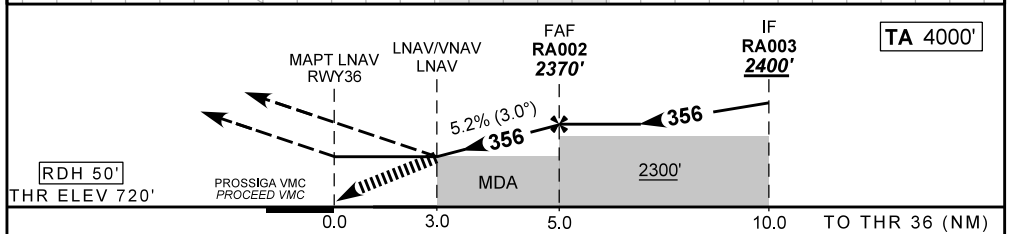
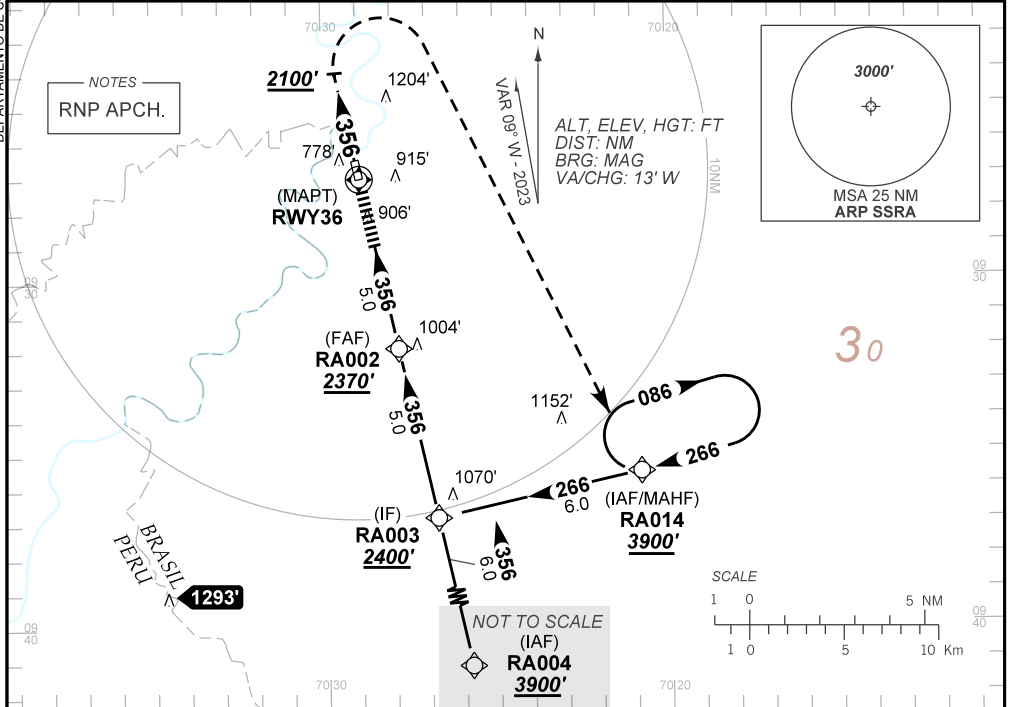
(CAT A, B)

AD ELEV: 721'

ATIS NIL	ERAA NIL	APP NIL	AFIS NIL	GNDC NIL
TEMP LNAV/VNAV MIN -10°C / MAX 55°C	FINAL CRS 356°	FAF: 2370'	LNAV/VNAV DA / (OCH): 1720' / (1000')	LNAV MDA / (OCH): 1720' / (1000')

APCH Perdida: Subir para **3900'**. Manter rumo **356** até **2100'**. Após, curvar à DIREITA direto RA014 para espera.  
Missed APCH: Climb to **3900'**. Maintain course **356** until **2100'**. After, turn RIGHT direct RA014 for holding.

DEPARTAMENTO DE CONTROLE DO ESPAÇO AÉREO



RWY36	3.0	4.0	RA002						Ground Speed (KT)	090	110	130	150	170	190
ALT	1720	2044	2370						FPM	500	600	700	800	NA	
(HGT)	1000	1324	1650						FAF-MAPT	NIL					

STRAIGHT-IN	CAT	A	B	C	D	E
	LNAV/VNAV	DA / (OCH)	1720' / (1000')		NA	
LNAV	ALS/NO ALS/ RVR ALS (m)	NIL / 5000 / NIL				
	MDA / (OCH)	1720' / (1000')				
CIRCLING	ALS/NO ALS/ RVR ALS (m)	NIL / 5000 / NIL				
	MDA / (OCH)	NA				
	VIS (m)					

CHANGES: NEW CHART.