

**INSTRUMENT APPROACH
CHART (IAC)**

CAMPINAS / Viracopos, INTL (SBKP)

ILS X or LOC X RWY 15

AD ELEV: 2170'

D-ATIS 127.825	APP SÃO PAULO 132.10 120.25 119.80 119.25 129.75	TWR CAMPINAS 118.25	GNDC CAMPINAS 121.90
--------------------------	--	-------------------------------	--------------------------------

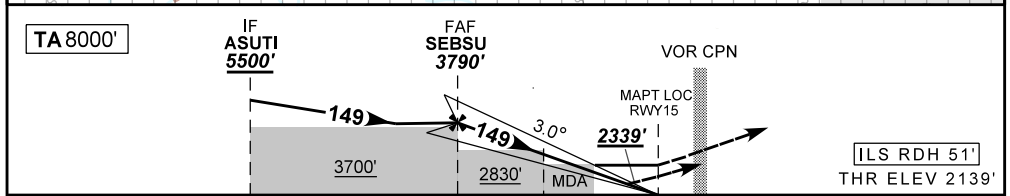
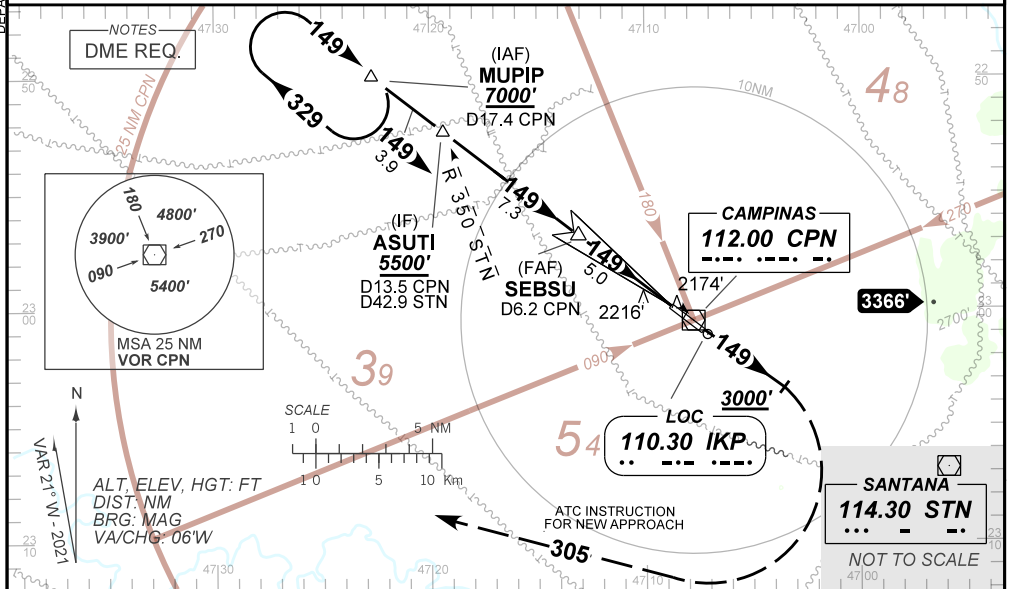
LOC IKP 110.30 MHz	FINAL CRS 149°	FAF: 3790'	CAT I DA / (OCH): 2339' / (200')	LOC only MDA / (OCH): 2600' / (461')
------------------------------	--------------------------	----------------------	--	--

APCH Perdida: Subir para **7000'**. Manter rumo **149** até **3000'**. Após, curvar à DIREITA na proa **305** e aguardar instruções ATC.

Missed APCH: Climb to **7000'**. Maintain course **149** until **3000'**. Then, turn RIGHT, heading **305** and expect ATC instructions.

RMK: 1) RADAR REQUERIDO / RADAR REQUIRED.

2) (*) VIS RVR ALS 550m para aproximação utilizando Diretor de Voo, Piloto Automático ou Head-Up Display (HUD) (*) RVR VIS ALS 550m for approach using a Flight Director, Autopilot or Head-Up Display (HUD).



TO THR 15 (NM)	12.3	5.0	2.0	1.3	0.5	0.0
TO CPN (DME)	13.5	6.2	3.2	2.5	1.7	1.2

	SEBSU	4.0	3.0	2.0	1.3	RWY15							
	3790	3464	3145	2827	2600	ALT							
	1651	1325	1006	688	461	(HGT)							

	KT	090	110	130	150	170	190
	FPM	500	600	700	800	900	1050
	FAF-MAPT				NA		

STRAIGHT-IN	CAT	A	B	C	D	E
CAT I	DA / (OCH)	2339' / (200')				
	ALS/NO ALS/ RVR ALS (m)	800 / 1200 / 700*				
LOC	MDA / (OCH)	2600' / (461')				
	ALS/NO ALS/ RVR ALS (m)	800 / 1600 / NIL		1500 / 2200 / NIL		
CIRCLING	MDA / (OCH)	NA				
	VIS (m)	NA				

DEPARTAMENTO DE CONTROLE DO ESPAÇO AEREO

CHANGES: NEW CHART.