

**INSTRUMENT APPROACH  
CHART (IAC)**

**PALMAS / Brigadeiro Lysias Rodrigues (SBPJ)**

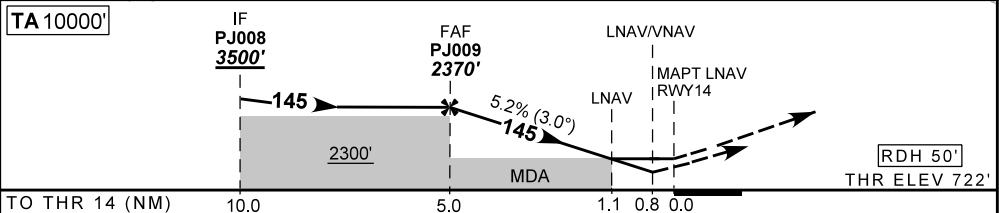
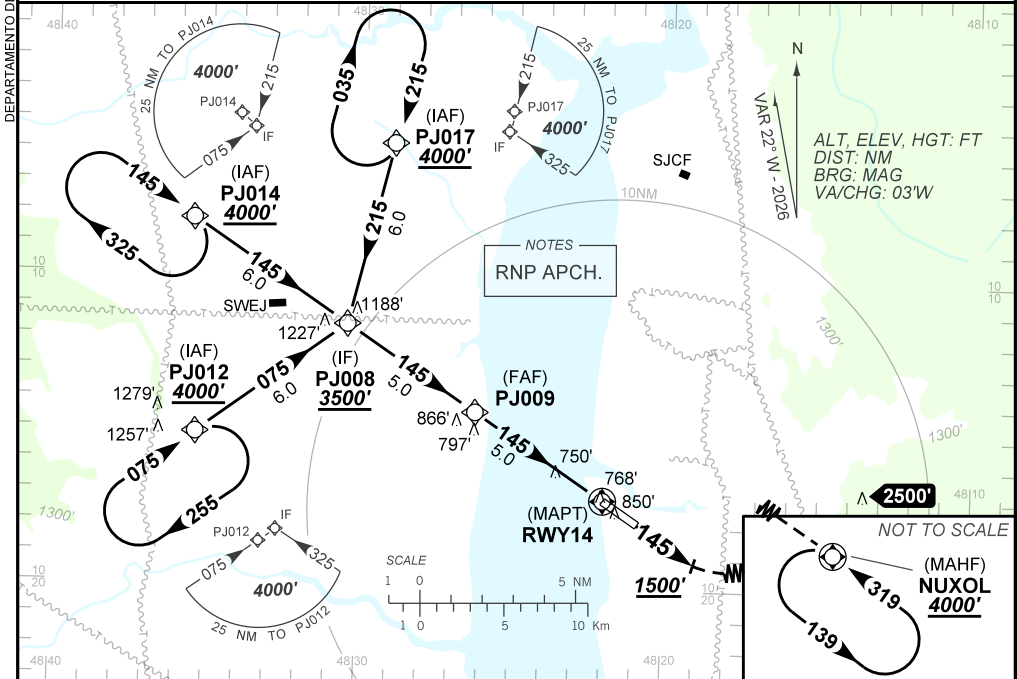
**AD ELEV: 774'**

**RNP Z RWY 14**

ATIS NIL	AFIS PALMAS 119.00	APP PALMAS 119.00	TWR PALMAS 118.00	GNDC NIL
TEMP LNAV/VNAV MIN 5°C / MAX 45°C	FINAL CRS 145°	FAF: 2370'	LNAV/VNAV DA / (OCH): 1032' / (310')	LNAV MDA / (OCH): 1120' / (400')

APCH Perdida: Subir para **4000'**. Manter proa **145** até **1500'**. Após, curvar à ESQUERDA direto NUXOL para espera.

Missed APCH: Climb to **4000'**. Maintain heading **145** until **1500'**. After, turn LEFT direct NUXOL for holding.



	PJ009	4.0	3.0	2.0	1.1	RWY14	Ground Speed (KT)	090	110	130	150	170	190
	2370	2046	1727	1409	1120	ALT	FPM	500	600	700	800	900	NA
	1648	1324	1005	687	400	(HGT)	FAF-MAPT	NIL					

STRAIGHT-IN	CAT	A	B	C	D	E
	DA / (OCH)	1032' / (310')				NA
LNAV/VNAV	ALS/NO ALS/ RVR ALS (m)	NIL / 1400 / NIL				
	MDA / (OCH)	1120' / (400')				
LNAV	ALS/NO ALS/ RVR ALS (m)	NIL / 1600 / NIL		NIL / 1800 / NIL		
	MDA / (OCH)	NA				
CIRCLING	MDA / (OCH)	NA				
	VIS (m)	NA				

CHANGES: LAYOUT, PROC. TA, VAR.