

**INSTRUMENT APPROACH
CHART (IAC)**

SANTA MARIA / Santa Maria (SBSM)

AD ELEV: 289'

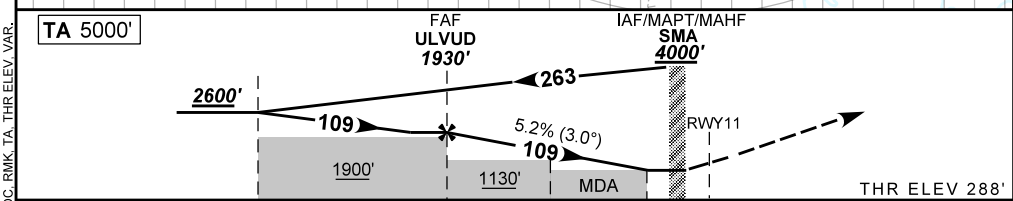
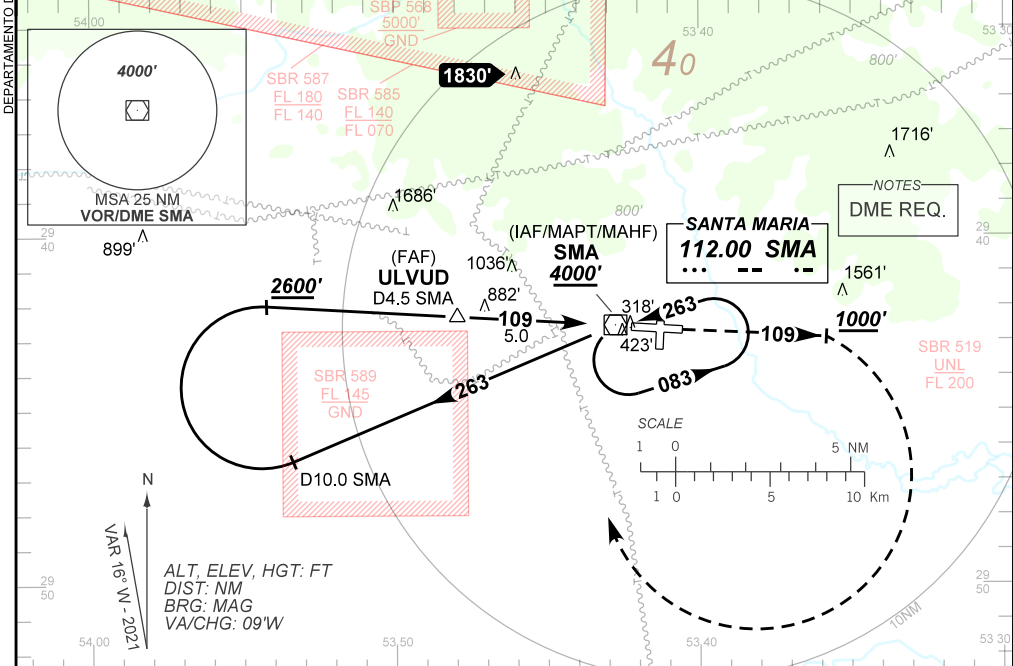
VOR Z RWY 11

ATIS 127.75	APP SANTA MARIA 119.35 121.35	TWR SANTA MARIA 118.30 118.85 122.80(MIL)	AFIS SANTA MARIA 119.35 121.35 118.30	GNDC NIL
-----------------------	---	---	---	--------------------

VOR SMA 112.00 MHz	FINAL CRS 109°	FAF: 1930'	N/A	VOR MDA / (OCH): 760' / (470')
------------------------------	--------------------------	----------------------	-----	--

APCH Perdida: Subir para **4000'**. Manter RDL **109** do VOR SMA até **1000'**. Após, curvar à DIREITA direto VOR SMA para espera.
 Missed APCH: Climb to **4000'**. Maintain **109** RDL SMA VOR until **1000'**. After, turn RIGHT direct to SMA VOR for holding.

RMK: NIL.



TO THR 11 (NM)	10.5	5.0	3.2	1.3	0.5	0.0	THR ELEV 288'
TO SMA (DME)	10.0	4.5	2.7	1.3	0.5	0.0	

	ULVUD	4.0	3.2	2.0	1.3	RWY11	Ground Speed (KT)	090	110	130	150	170	190
		1930	1612	1360	975	760	FPM	500	600	700	800	900	1000
		1642	1324	1069	687	470	FAF-MAPT	NA					

STRAIGHT-IN	CAT	A	B	C	D	E
	MDA / (OCH)	760' / (470')				
VOR	ALS/NO ALS/ RVR ALS (m)	800 / 1600 / 700			1500 / 2200 / 1400	
CIRCLING	MDA / (OCH)	NA				
	VIS (m)					

DEPARTAMENTO DE CONTROLE DO ESPAÇO AEREO
CHANGES: EAC, FREQ, LAYOUT, MINM OPR, PROC, RMK, TA, THR ELEV, VAR.