

**INSTRUMENT APPROACH
CHART (IAC)**

CURITIBA / Afonso Pena, INTL (SBCT)

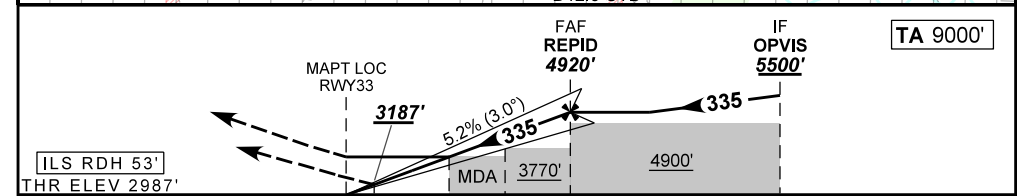
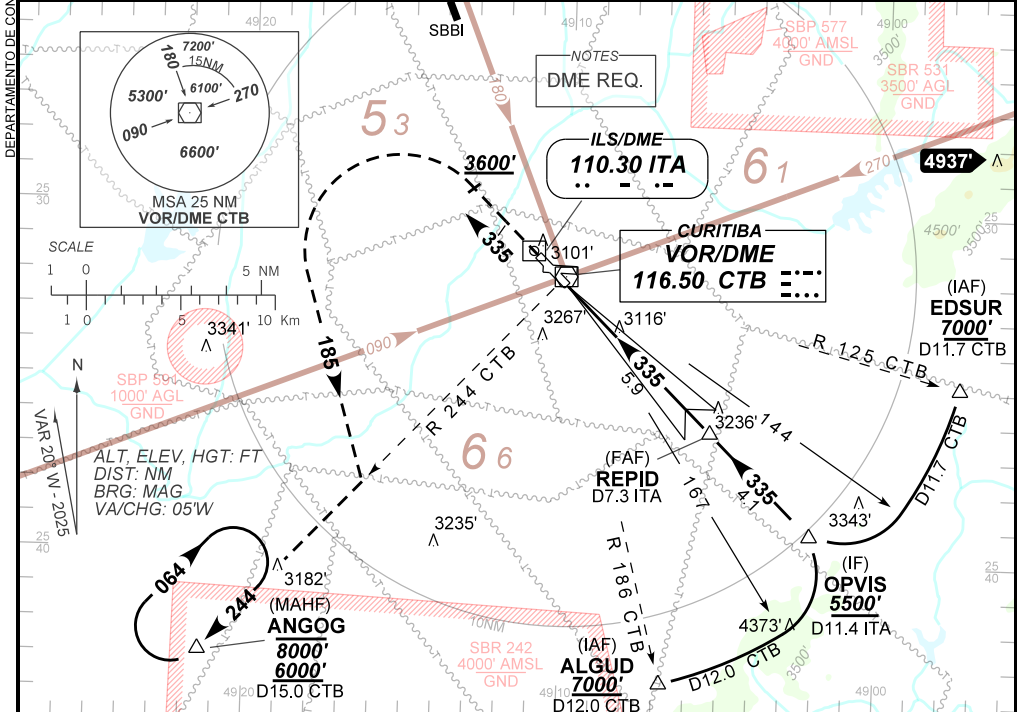
AD ELEV: 2989'

ILS Y or LOC Y RWY 33

D-ATIS 127.80	APP CURITIBA 119.70 119.95 120.65 120.95 129.55 133.15				TWR CURITIBA 118.15	GND C CURITIBA 121.90
ILS/DME ITA 110.30 MHz	FINAL CRS 335°	FAF: 4920'	CAT I DA / (OCH): 3187' / (200')		LOC MDA / (OCH): 3370' / (390')	

APCH Perdida: Subir para **6000'**. Manter proa **335** até **3600'**. Após, curvar a **ESQUERDA** proa **185** para interceptar RDL **244** do VOR CTB para espera em ANGG.

Missed APCH: Climb to **6000'**. Maintain heading **335** until **3600'**. After, turn **LEFT** heading **185** to intercept **244** RDL CTB VOR for holding at ANGG.



0.0	0.5	1.1	2.3	5.9	10.0	TO THR 33 (NM)
1.4	1.9	2.5	3.7	7.3	11.4	TO ITA (DME)

RWY33	1.1	2.3	3.0	4.0	5.0	REPID	Ground Speed (KT)	090	110	130	150	170	190
ALT	3370	3773	3995	4314	4632	4920	FPM	500	600	700	800	900	NA
(HGT)	390	786	1008	1327	1645	1933	FAF-MAPT	NA					

STRAIGHT-IN	CAT	A	B	C	D	NA
	DA / (OCH)	3187' / (200')				
CAT I	ALS/NO ALS/ RVR ALS (m)	NIL / 1200 / NIL				NA
	MDA / (OCH)	3370' / (390')				
LOC	ALS/NO ALS/ RVR ALS (m)	NIL / 1600 / NIL		NIL / 1800 / NIL		NA
	MDA / (OCH)	NA				
CIRCLING	MDA / (OCH)	NA				NA
	VIS (m)	NA				

CHANGES: NIL

DEPARTAMENTO DE CONTROLE DO ESPAÇO AÉREO