

STANDARD DEPARTURE CHART  
INSTRUMENT (SID)

CURITIBA / Afonso Pena, INTL (SBCT)

RWY 33

RNAV ISPEP 1B

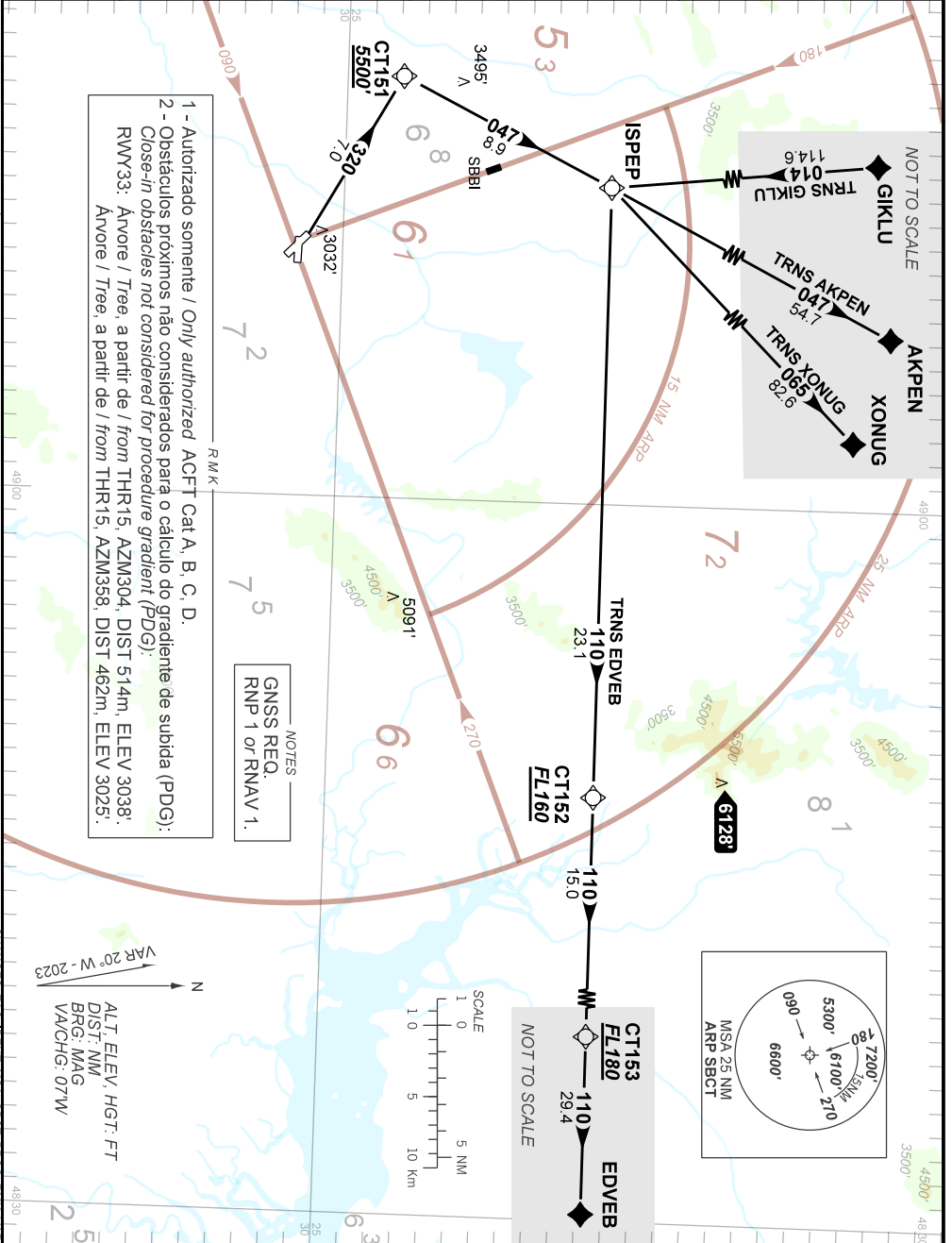
AD ELEV: 2989'

TA 9000'	D-ATIS 127.80	TWR CURITIBA 118.15	APP CURITIBA 119.70 119.95 120.65 120.95 129.55 133.15	ACC CURITIBA 128.25 126.95 124.775 135.00
----------	------------------	------------------------	--	---

DEPARTAMENTO DE CONTROLE DO ESPAÇO AEREO

1 - Autorizado somente / Only authorized ACFT Cat A, B, C, D.  
2 - Obstáculos próximos não considerados para o cálculo do gradiente de subida (PDG):  
Close-in obstacles not considered for procedure gradient (PDG):  
RWM33: Avore / Tree, a partir de / from THR15, AZM304, DIST 514m, ELEV 3038'.  
Avore / Tree, a partir de / from THR15, AZM358, DIST 462m, ELEV 3025'.

NOTES  
GNSS REQ.  
RNP 1 or RNAV 1.



CHANGES: EAC: IDENT I, MSA: OBST I, PROC: RMK VAR.