

**INSTRUMENT APPROACH
CHART (IAC)**

NATAL / Augusto Severo, MIL (SBNT)

AD ELEV: 171'

RNP RWY 30

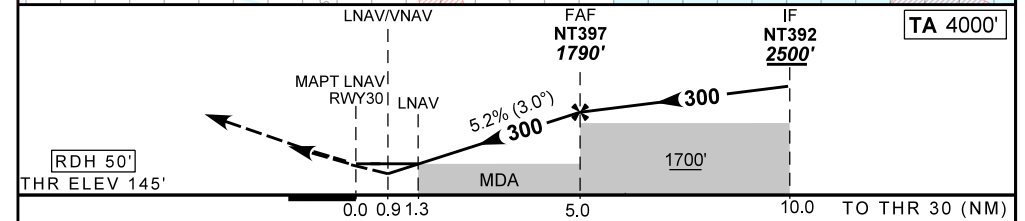
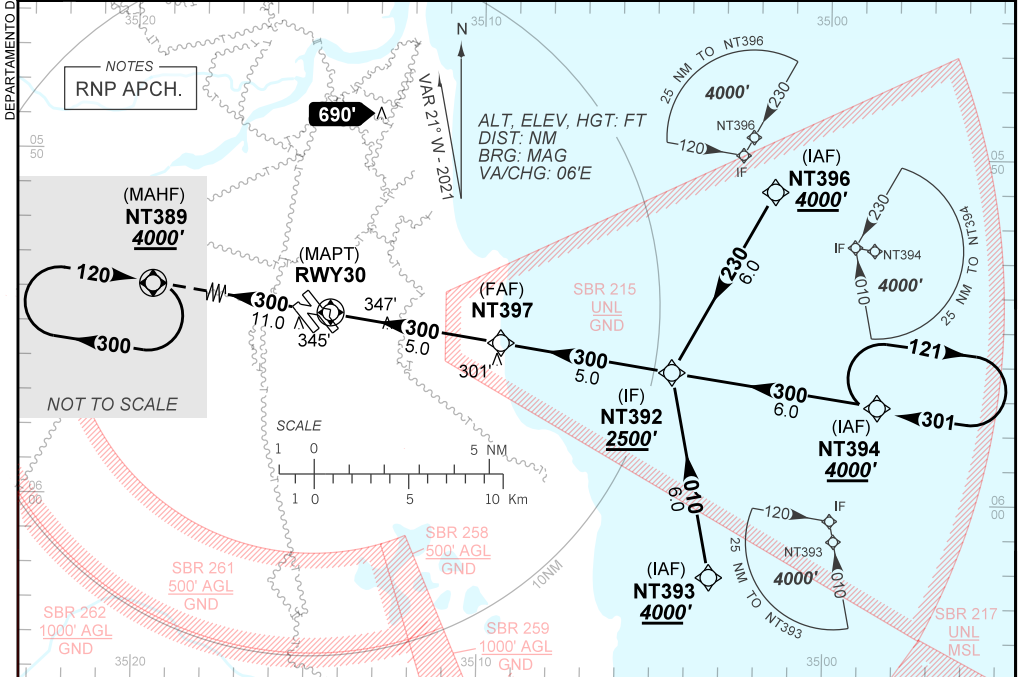
D-ATIS 132.65	APP 119.30 119.65 120.65 129.80	TWR NATAL 118.70 122.80	GNDC NATAL 121.90
-------------------------	---	-----------------------------------	-----------------------------

TEMP LNAV/VNAV MIN 0°C / MAX 50°C	FINAL CRS 300°	FAF: 1790'	LNAV/VNAV DA / (OCH): 492' / (347')	LNAV MDA / (OCH): 610' / (470')
---	--------------------------	----------------------	---	---

APCH Perdida: Subir para **4000'**. Manter rumo **300** para espera em NT389.

Missed APCH: Climb to **4000'**. Maintain course **300** direct to NT389 for holding.

RMK: NIL.



RWY12	0.9	1.3	2.0	3.0	4.0	NT397	Ground Speed (KT)	080	100	120	140	160	180
ALT	492	610	832	1150	1469	1790	FPM	420	530	630	740	840	950
(HGT)	347	470	687	1005	1324	1645	FAF-MAPT	NIL					

STRAIGHT-IN	CAT	A	B	C	D	E
	DA / (OCH)	492' / (347')				NA
LNAV/VNAV	ALS/NO ALS/ RVR ALS (m)	NIL / 1600 / NIL				NA
	MDA / (OCH)	610' / (470')				
LNAV	ALS/NO ALS/ RVR ALS (m)	NIL / 1600 / NIL		NIL / 2200 / NIL		
	MDA / (OCH)	NA				
CIRCLING	MDA / (OCH)	NA				
	VIS (m)	NA				

AIRAC AMDT 2107A1 15 JUL 21

SBNT_IAC_00S 1/1
IAC RNP RWY 30

CHANGES:ADEL.FREQ.LAYOUT.VAR.

DEPARTAMENTO DE CONTROLE DO ESPAÇO AÉREO