

INSTRUMENT APPROACH CHART (IAC)

SÃO PAULO / Guarulhos - Gov. André Franco Montoro, INTL (SBGR)

ILS Q CAT II & III RWY 10R

AD ELEV: 2461'

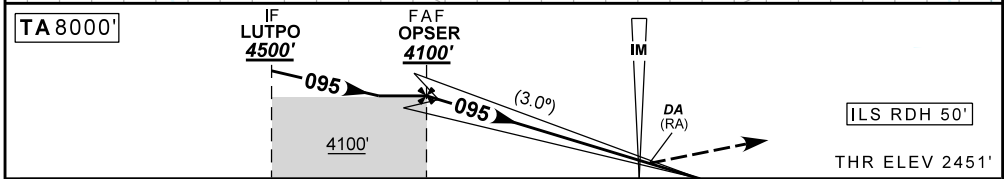
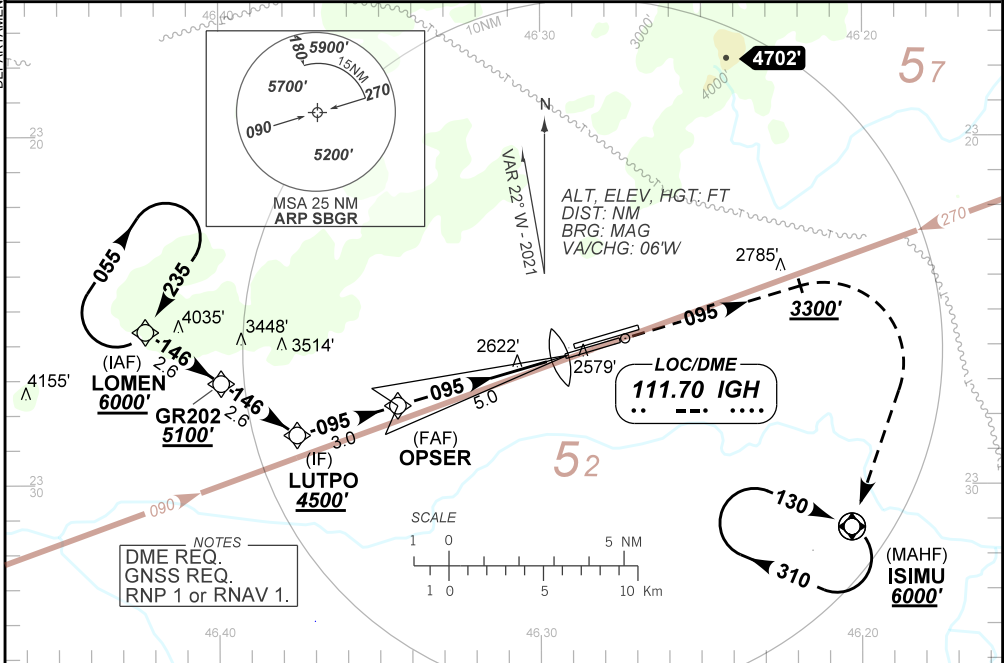
D-ATIS 127.75	APP SÃO PAULO 129.75 119.15 120.45 120.85 133.85	TWR GUARULHOS 118.40 132.75 135.20	GNDQ GUARULHOS 121.70 126.90
-------------------------	--	--	--

LOC IGH 111.70 MHz	FINAL CRS 095°	FAF: 4100'	ILS CAT II & IIIA DA / (OCH): REFER TO MNM	N/A
------------------------------	--------------------------	----------------------	--	------------

APCH Perdida: Subir para **6000'**. Manter rumo **095** até cruzar **3300'**. Após, curvar à DIREITA direto ISIMU para espera. IAS MAX 230KT.

Missed APCH: Climb to **6000'**. Maintain course **095** until passing **3300'**. Then, turn RIGHT direct ISIMU for holding. IAS MAX 230KT.

RMK: * CAT IIIA DA / (OCH) / RA: 2501' / (50') / 50' requerido para aeronave operando com "Falha Passiva"
* CAT IIIA DA / (OCH) / RA: 2501' / (50') / 50' required for aircraft operating with "Fail Passive".



TO THR 10R (NM)	8.0	5.0	0.2	0.0
TO IGH (DME)	8.2	5.2	0.4	0.2

OPSEK	4.0	3.0	2.0	1.0	IM	RWY10R	Ground Speed (KT)	90	110	130	150	170	190
4100	3775	3457	3138	2820	2565	ALT	FPM	500	600	700	800	900	1000
1649	1324	1006	687	369	113	(HGT)	FAF-MAPT	NA					

STRAIGHT-IN	CAT	A	B	C	D	E
	DA / (OCH) / RA	*				
CAT IIIA	ALS/NO ALS/ RVR ALS (m)	NIL / NIL / 175				
	DA / (OCH) / RA	2551' / (100)' / 112'				
ILS CAT II	ALS/NO ALS/ RVR ALS (m)	NIL / NIL / 300				
	MDA / (OCH)	NA				
CIRCLING	VIS (m)	NA				

CHANGES: THR.