

DEPARTURE CHART  
INSTRUMENT (SID)

BELÉM / Val de Cans - Júlio Cezar Ribeiro, INTL (SBBE)

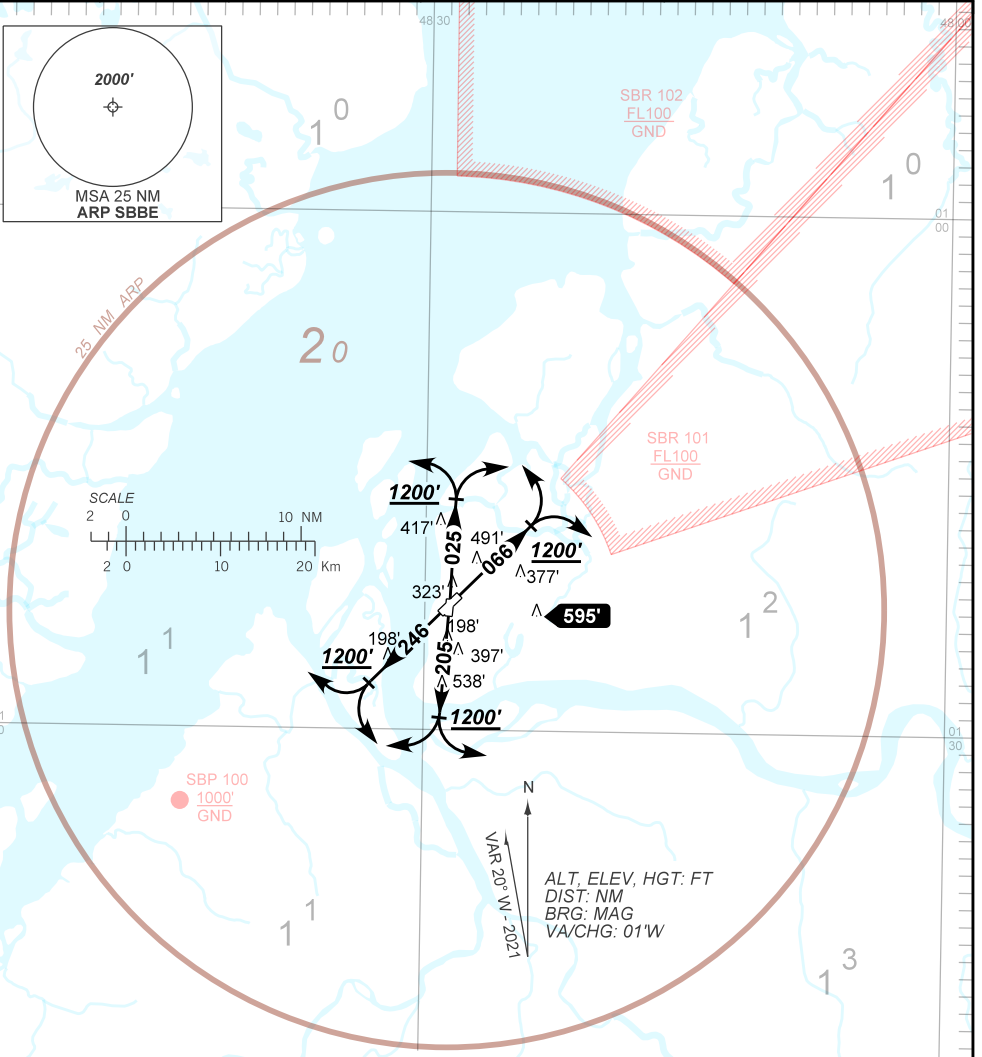
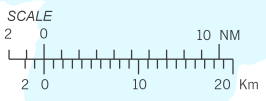
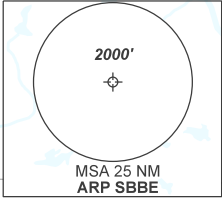
RWY 02/20, 06/24

AD ELEV: 56'

OMNI

TA 4000'	D-ATIS 127.60	TWR BELÉM 118.70	APP BELÉM 119.05 119.50	ACC AMAZÔNICO 125.75 126.65 126.15 123.95
----------	------------------	---------------------	----------------------------	--

DEPARTAMENTO DE CONTROLE DO ESPAÇO AÉREO



CHANGES: NEW CHART.

- R M K -
- 1 - Não permitido curvas antes do DER / Turns are not permitted prior to the DER.
  - 2 - Gradiente MNM de subida / MNM climb gradient:  
4.3% até / until 1200'. Após / After, 3.3%.
  - 3 - Obstáculos próximos não considerados para o cálculo do gradiente de subida (PDG).  
Close-in obstacles not considered for procedure gradient (PDG):  
Árvores / Tree: a partir de / from THR 20, AZM 063, DIST 371m, ELEV 107'.  
Árvores / Trees: a partir de / from THR 24, AZM 139, DIST 122 m, ELEV 86'.  
Torre / Tower: a partir de / from THR 02, AZM 183, DIST 1019 m, ELEV 147'.  
Árvores / Trees: a partir de / from THR 06, AZM 269, DIST 365 m, ELEV 127'.