

**INSTRUMENT APPROACH
CHART (IAC)**

CANOAS / Campo Nossa Senhora de Fátima, MIL (SBCO)

AD ELEV: 26'

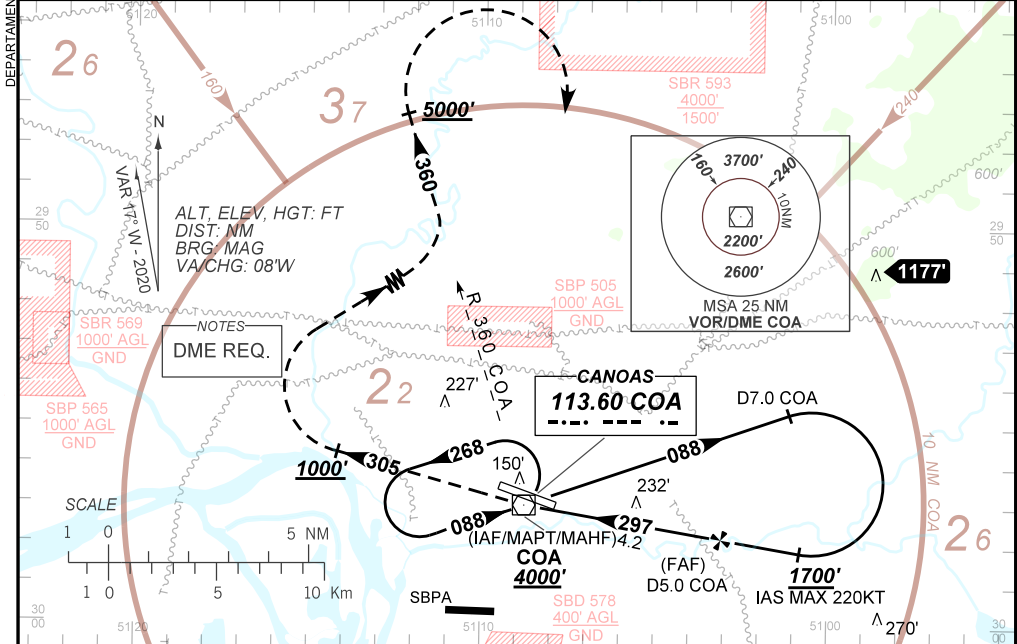
VOR Z RWY 31

ATIS NIL	APP PALEGRE 119.00 120.10 120.55 128.90			TWR CANOAS 118.50 122.80 (MIL)	GNDC CANOAS 121.70
VOR COA 113.60 MHz	FINAL CRS 297°	FAF 1430'	N/A		VOR MDA / (OCH): 510' / (490')

APCH Perdida: Subir para **5000'**. Manter proa **305** até **1000'**. Após, curvar à DIREITA para interceptar a RDL **360** do VOR COA até **5000'**. Então, curvar à DIREITA direto VOR COA para espera.

Missed APCH: Climb to **5000'**. Maintain heading **305** until **1000'**. After, turn RIGHT to intercept **360** RDL COA VOR until **5000'**. Then, turn RIGHT direct to COA VOR for holding.

RMK: Não autorizado esperas simultâneas sobre Canoas e Porto Alegre no mesmo nível.
Unauthorized simultaneous holding over Canoas and Porto Alegre on the same flight level.



IAF/MAPT/MAHF COA 4000'	FAF 1430'	TA 6000'		
THR ELEV 23'				
TO THR 31 (NM)	0.0	1.4	4.2	6.2
TO COA (DME)	0.8	2.2	5.0	7.0

RWY31	1.4	2.0	3.0	4.0	FAF	Ground Speed (KT)	090	110	130	150	170	190
ALT (HGT)	510	711	1029	1348	1430	FPM	500	600	700	800	900	1000
	490	688	1006	1325	1407	FAF-MAPT	NA					

STRAIGHT-IN	CAT	A	B	C	D	E
	MDA / (OCH)	510' / (490')				
VOR	ALS/SNO ALS/ RVR ALS (m)	NIL / 1600 / NIL			NIL / 2300 / NIL	
CIRCLING	MDA / (OCH)	NA				
	VIS (m)					

CHANGES: EAC, IDENT, LAYOUT.