

**INSTRUMENT APPROACH CHART (IAC)**

**SÃO PEDRO DA ALDEIA / Tenente Jorge Henrique Möller, MIL (SBES)**

**VOR Z RWY 07**

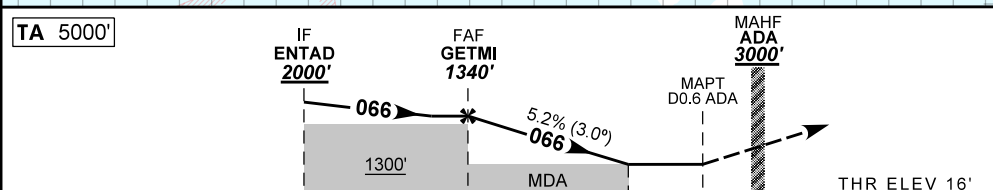
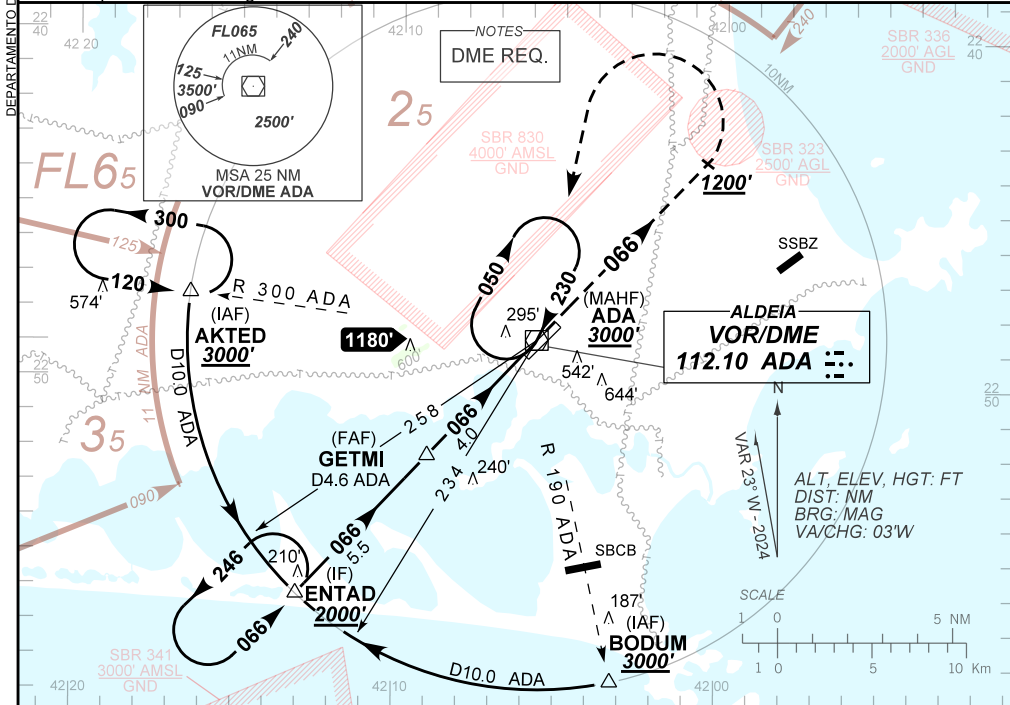
**AD ELEV: 61'**

ATIS <b>NIL</b>	APP ALDEIA <b>119.45 120.30</b>	TWR ALDEIA <b>118.30 122.80 (MIL)</b>	GNDCL ALDEIA <b>121.90</b>
VOR ADA <b>112.10 MHz</b>	FINAL CRS <b>066°</b>	FAF: <b>1340'</b>	N/A
VOR MDA / (OCH): <b>470' / (460')</b>			

APCH Perdida: Subir para **3000'**. Manter rumo **066** até **1200'**. Após, curvar à ESQUERDA direto VOR ADA para espera. IAS MAX 230KT.

Missed APCH: Climb to **3000'**. Maintain course **066** until **1200'**. After, turn LEFT direct VOR ADA for holding. IAS MAX 230KT.

RMK: Espera em I Holding over AKTED IAS MAX 230KT.



TO THR 07 (NM)	9.4	4.0	1.3	0.0		THR ELEV 16'
TO ADA (DME)	10.0	4.6	1.9	0.6		

	GETMI	3.0	2.0	1.3	RWY07	Ground Speed (KT)	090	110	130	150	170	190
	1340	1021	703	470	ALT	FPM	500	600	700	800	900	NA
	1324	1005	687	460	(HGT)	FAF-MAPT	NA					

STRAIGHT-IN	CAT	A	B	C	D	E
	MDA / (OCH)	470' / (460')				
VOR	ALS/NO ALS/ RVR ALS (m)	NIL / 1600 / NIL		NIL / 2100 / NIL		NA
	MDA / (OCH)	NA				
CIRCLING	VIS (m)					

CHANGES: EAC, LAYOUT, OBST, VAR.