

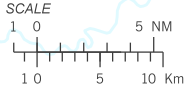
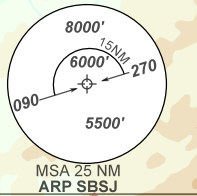
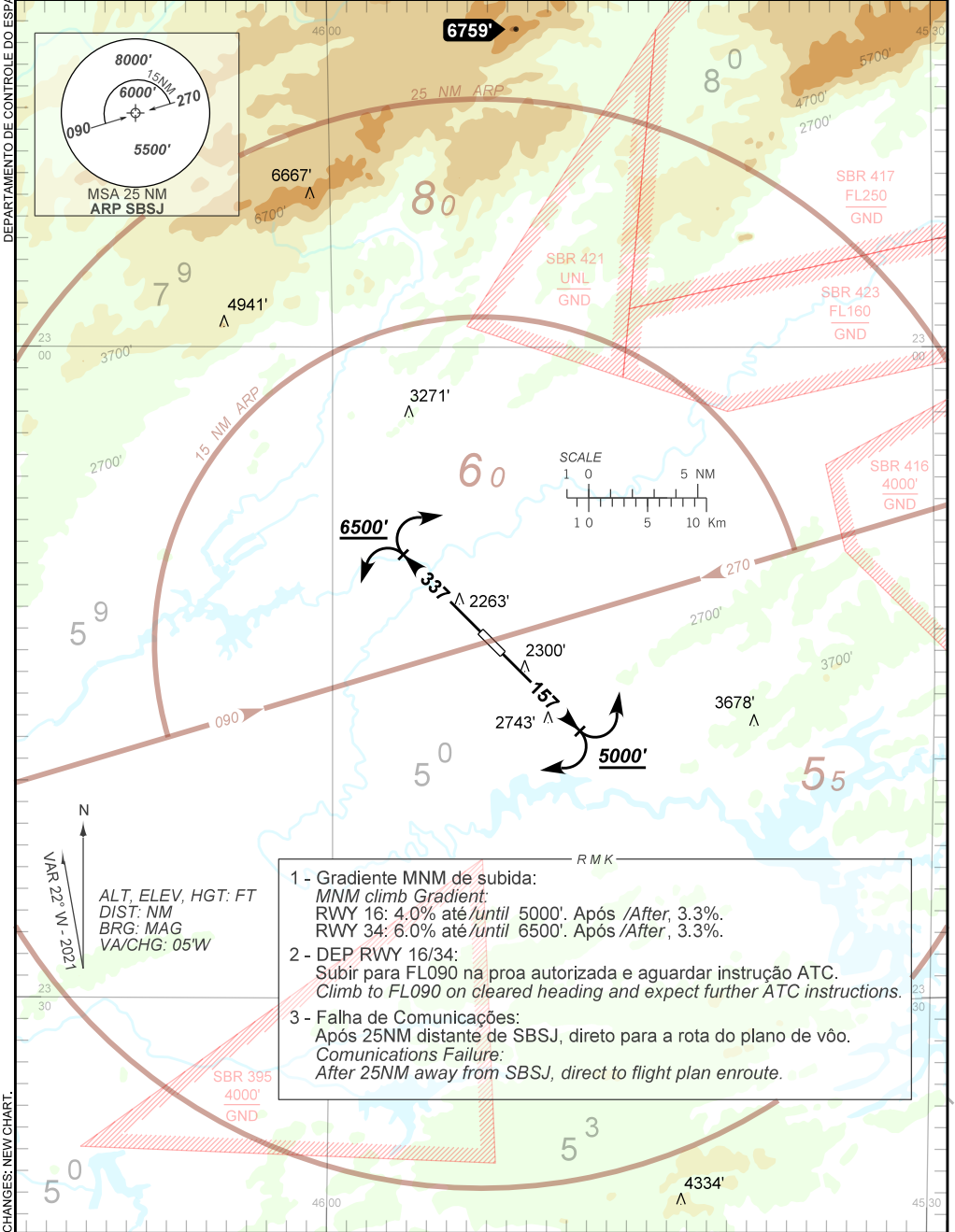
STANDARD DEPARTURE CHART
INSTRUMENT (SID)

SÃO JOSÉ DOS CAMPOS / Prof. Urbano Ernesto Stumpf (SBSJ)
RWY 16/34
OMNI

AD ELEV: 2123'

TA 8000'	TWR SÃO JOSÉ 118.50	APP SÃO PAULO 120.45 129.05 129.75	APP RIO 125.60 123.90 121.35 124.70	ACC CURITIBA 125.40 124.40 132.80 126.50 126.95	ACC BRASÍLIA 123.35 134.00 126.80 128.50 126.15
----------	---------------------	---------------------------------------	--	--	--

DEPARTAMENTO DE CONTROLE DO ESPAÇO AÉREO



- 1 - Gradiente MNM de subida:
MNM climb Gradient:
RWY 16: 4.0% até/until 5000'. Após /After, 3.3%.
RWY 34: 6.0% até/until 6500'. Após /After, 3.3%.
- 2 - DEP RWY 16/34:
Subir para FL090 na proa autorizada e aguardar instrução ATC.
Climb to FL090 on cleared heading and expect further ATC instructions.
- 3 - Falha de Comunicações:
Após 25NM distante de SBSJ, direto para a rota do plano de voo.
Communications Failure:
After 25NM away from SBSJ, direct to flight plan enroute.

CHANGES: NEW CHART.