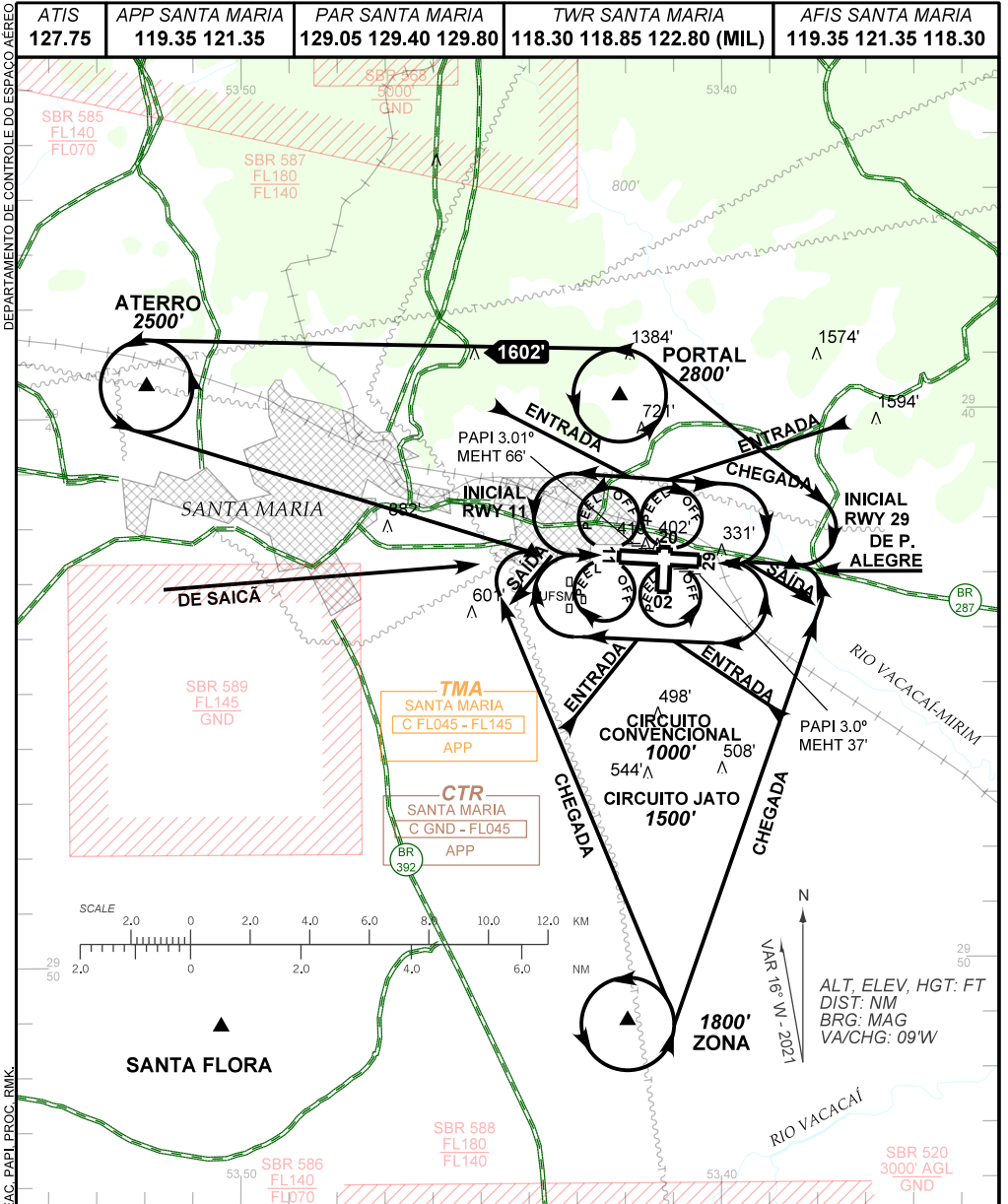


**VISUAL APPROACH CHART
(VAC)**

SANTA MARIA / Santa Maria (SBSM)

AD ELEV: 289'

RWY 11 / 29



RMK:

1- OPERAÇÃO NOTURNA: RWY 11/29: SOMENTE PELO SETOR SUL PARA TODAS AS AERONAVES