

**INSTRUMENT APPROACH
CHART (IAC)**

BAGÉ / Comandante Gustavo Kraemer (SBBG)

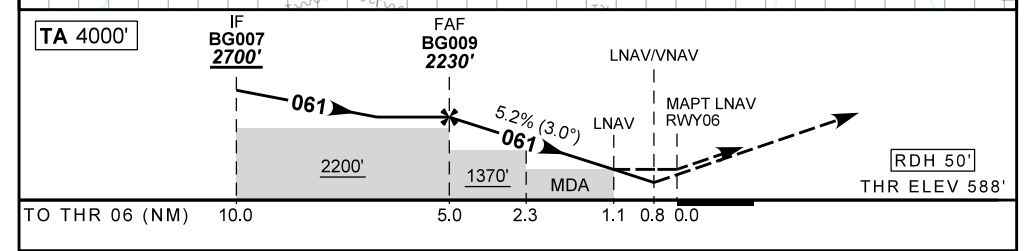
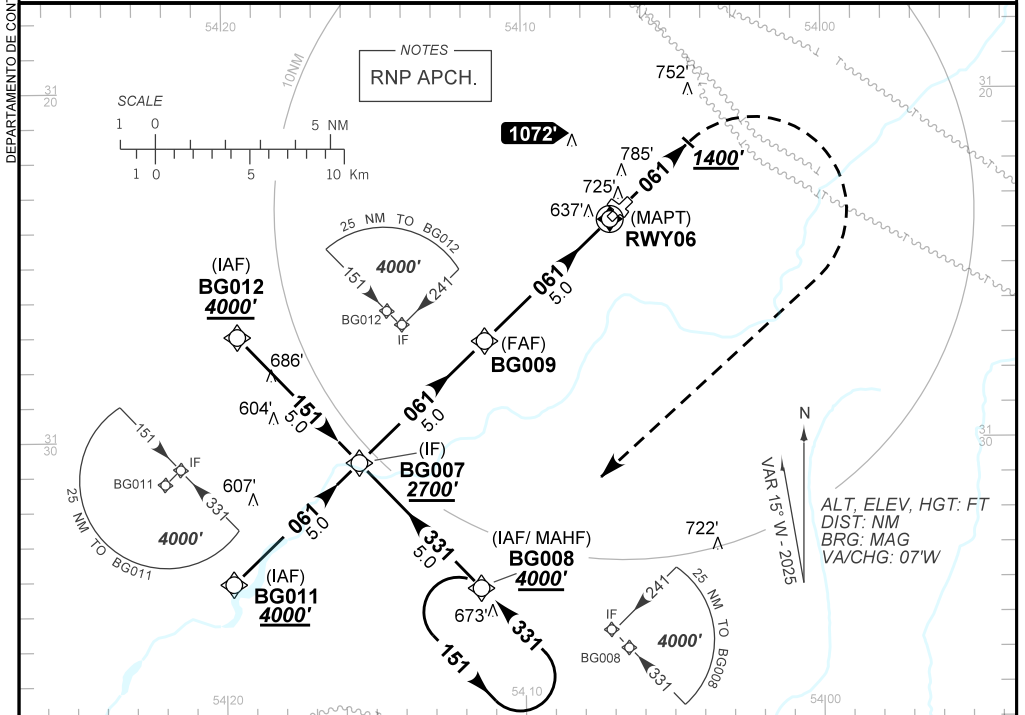
RNP RWY 06

AD ELEV: 597'

(CAT A, B, C)

ATIS NIL	ERAA 132.60	APP NIL	AFIS BAGÉ 125.85	GNDC NIL
TEMP LNAV/VNAV MIN -10°C / MAX 50°C	FINAL CRS 061°	FAF: 2230'	LNAV/VNAV DA / (OCH): 898' / (310')	LNAV MDA / (OCH): 990' / (410')

APCH Perdida: Subir para **4000'** na proa **061**. Após **1400'**, curvar à DIREITA direto BG008 para espera.
Missed APCH: Climb to **4000'** on heading **061**. After **1400'**, turn RIGHT direct BG008 for holding.



	BG009	4.0	3.0	2.3	1.1	RWY06	Ground Speed (KT)	090	110	130	150	170	190
	2230	1912	1593	1370	990	ALT	FPM	500	600	700	800	NA	
	1642	1324	1005	782	410	(HGT)	FAF-MAPT	NIL					

STRAIGHT-IN	CAT	A	B	C	D	E
	DA / (OCH)	898' / (310')				
LNAV/VNAV	ALS/NO ALS/ RVR ALS (m)	NIL / 1400 / NIL				
	MDA / (OCH)	990' / (410')				
LNAV	ALS/NO ALS/ RVR ALS (m)	NIL / 1600 / NIL			NIL / 1900 / NIL	
	MDA / (OCH)	NA				
CIRCLING	MDA / (OCH)	NA				
	VIS (m)	NA				

AIRAC AMDT 2512A1 27 NOV 25

SBBG_IAC_00J 1/1
IAC RNP RWY 06

CHANGES: ADEL, OBST, PROC, VAR.

DEPARTAMENTO DE CONTROLE DO ESPAÇO AÉREO