

STANDARD DEPARTURE CHART
INSTRUMENT (SID)

RIO DE JANEIRO / Santos Dumont (SBRJ)

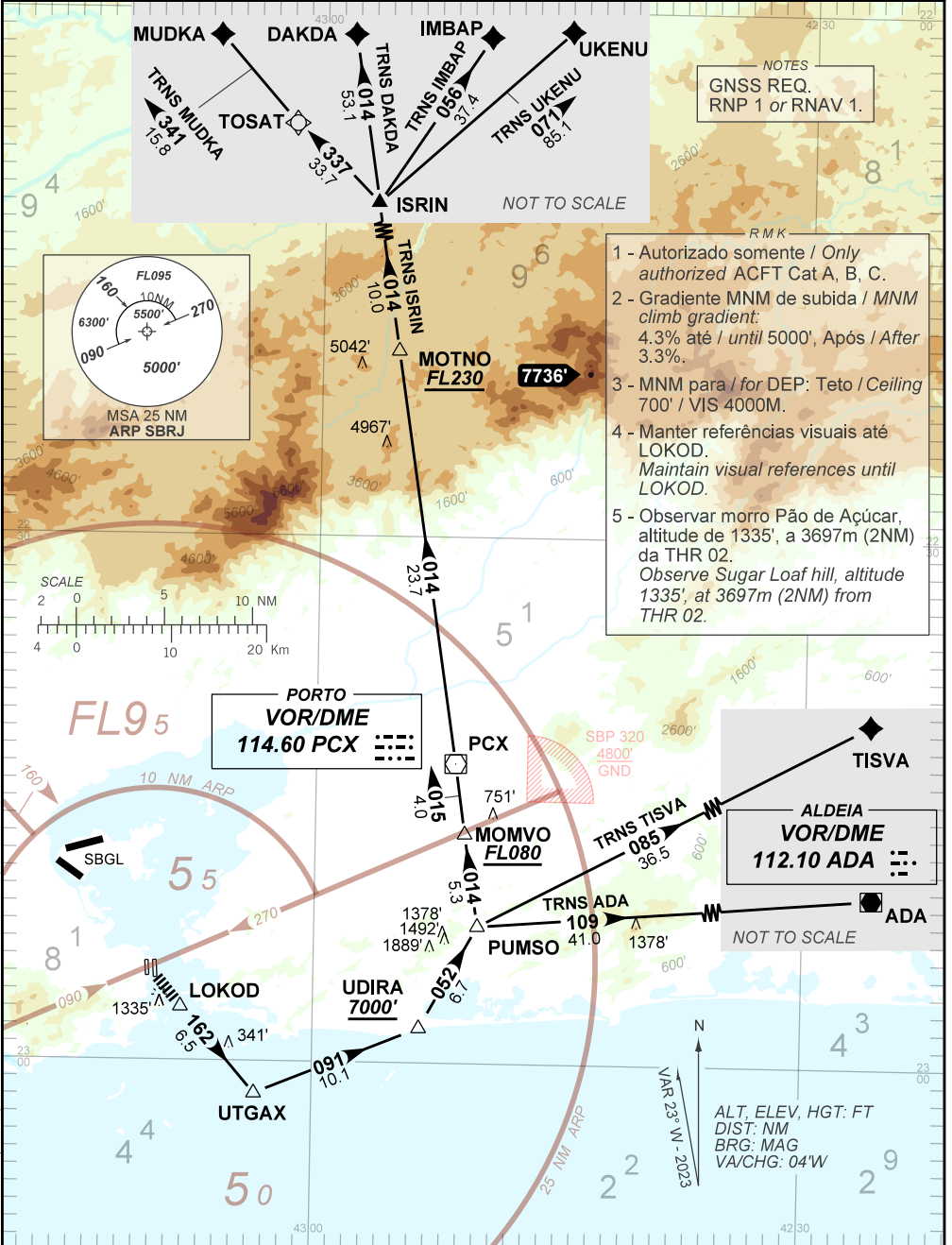
RWY 20L

RNAV PUMSO 3C

AD ELEV: 10'

TA 7000'	D-ATIS 132.65	TWR RIO 118.70	APP RIO 119.725 121.25 132.975 134.40	APP MACAÉ 119.20 129.30	ACC CURITIBA 124.00 125.35 128.25 133.40 133.60
----------	---------------	----------------	--	-------------------------	--

DEPARTAMENTO DE CONTROLE DO ESPAÇO AÉREO



NOTES
GNSS REQ.
RNP 1 or RNAV 1.

- 1 - Autorizado somente / Only authorized ACFT Cat A, B, C.
- 2 - Gradiente MNM de subida / MNM climb gradient: 4.3% até / until 5000', Após / After 3.3%.
- 3 - MNM para / for DEP: Teto / Ceiling 700' / VIS 4000M.
- 4 - Manter referências visuais até LOKOD. Maintain visual references until LOKOD.
- 5 - Observar morro Pão de Açúcar, altitude de 1335', a 3697m (2NM) da THR 02. Observe Sugar Loaf hill, altitude 1335', at 3697m (2NM) from THR 02.

CHANGES: AMA IDENT. PROC.