

**INSTRUMENT APPROACH
CHART (IAC)**

CAMPINAS / Viracopos, INTL (SBKP)

AD ELEV: 2170'

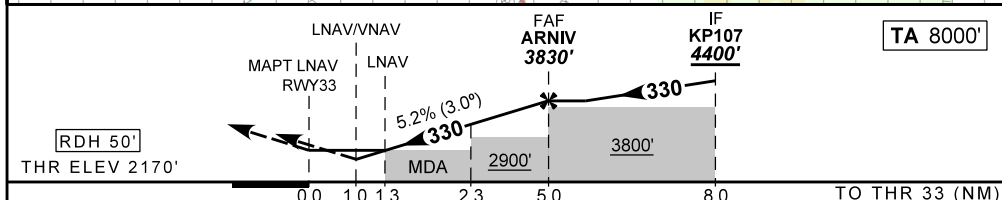
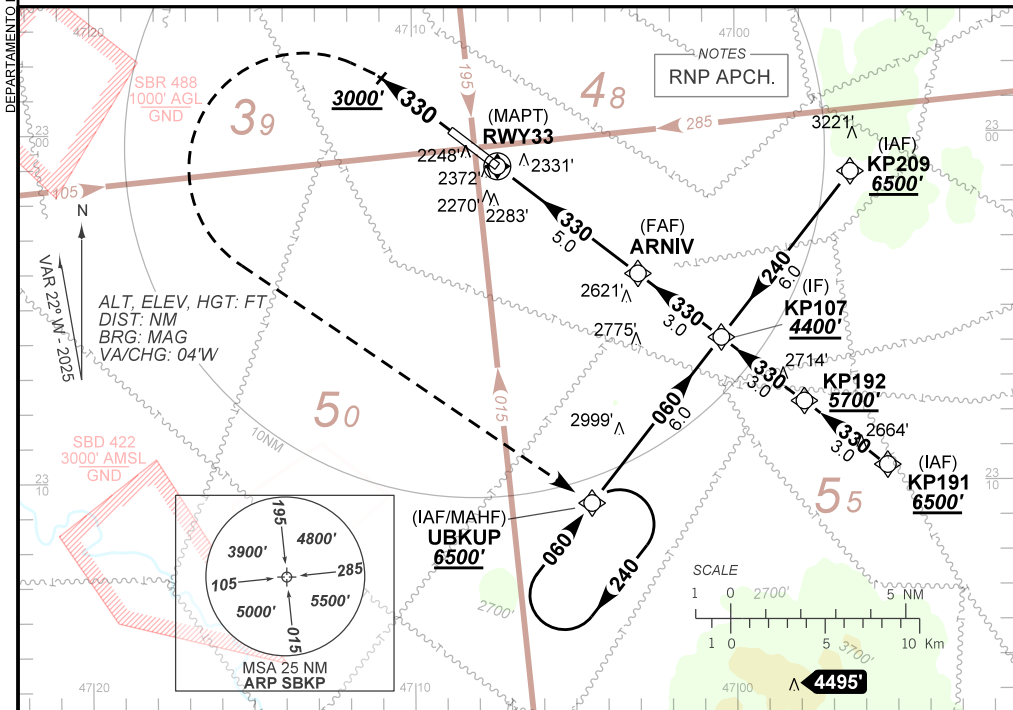
RNP X RWY 33

D-ATIS 127.825	APP SÃO PAULO 119.05 119.15 119.25 119.60 119.80 120.05 120.25 120.85 121.40 122.75 123.25 124.15	TWR CAMPINAS 118.25	GNDC CAMPINAS 121.90
--------------------------	---	-------------------------------	--------------------------------

TEMP LNAV / VNAV MIN -10°C / MAX 50°C	FINAL CRS 330°	FAF: 3830'	LNAV / VNAV DA / (OCH): 2533' / (363')	LNAV MDA / (OCH): 2620' / (450')
---	--------------------------	----------------------	--	--

APCH Perdida: Subir para **6500'**. Manter rumo **330** até **3000'**. Após, curvar à ESQUERDA direto UBKUP. para espera.

Missed APCH: Climb to **6500'**. Maintain course **330** until **3000'**. After, turn LEFT direct UBKUP for holding.



RWY33	1.3	2.0	KP702	3.0	4.0	ARNIV	Ground Speed (KT)	090	110	130	150	170	190
ALT	2620	2857	2953	3175	3494	3830	FPM	500	600	700	800	900	NA
(HGT)	450	687	783	1005	1324	1660	FAF-MAPT	NA					

STRAIGHT-IN	CAT	A	B	C	D	E	
	DA / (OCH)	2533' / (363')					NA
LNAV/VNAV	ALS/NO ALS/ RVR ALS (m)	NIL / 1700 / NIL					
	MDA / (OCH)	2620' / (450')					
LNAV	ALS/NO ALS/ RVR ALS (m)	NIL / 1700 / NIL			NIL / 2100 / NIL		
	MDA / (OCH)	NA					
CIRCLING	VIS (m)	NA					

CHANGES: LAYOUT.