

**INSTRUMENT APPROACH
CHART (IAC)**

CRUZEIRO DO SUL / Cruzeiro do Sul, INTL (SBCZ)

AD ELEV: 636'

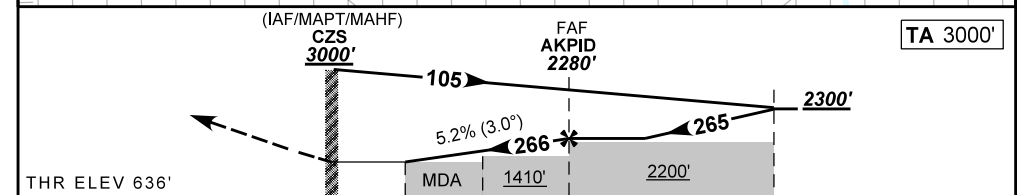
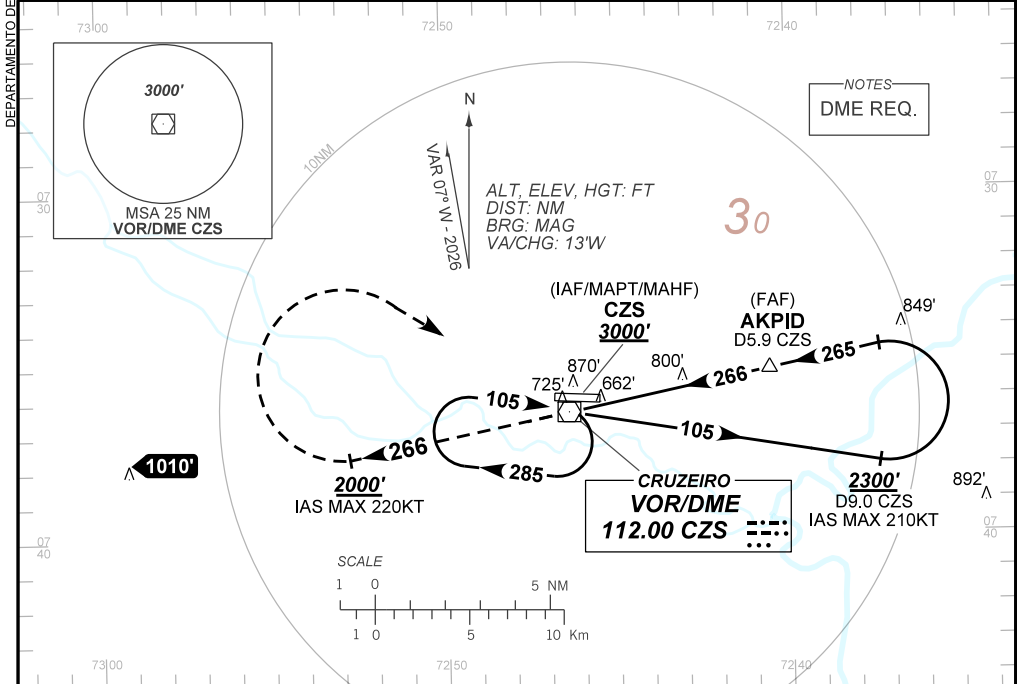
VOR RWY 28

ATIS NIL	APP NIL	AFIS CRUZEIRO 125.70	GND NIL
--------------------	-------------------	--------------------------------	-------------------

VOR CZS 112.00 MHz	FINAL CRS 266°	FAF: 2280'	N/A	VOR MDA / (OCH): 1040' / (410')
------------------------------	--------------------------	----------------------	-----	---

APCH Perdida: 1) Subir para **3000'**. Manter proa **266** até **2000'**. Após curvar à DIREITA, direto VOR CZS para espera. 2) IAS MAX 220KT.

Missed APCH: 1) Climb to **3000'**. Maintain heading **266** until **2000'**. After, turn RIGHT direct CZS VOR for holding. 2) IAS MAX 220KT.



0.0	1.1	2.3	5.0	8.1	TO THR 28 (NM)
0.9	2.0	3.2	5.9	9.0	TO CZS (DME)

RWY28	1.1	2.3	3.0	4.0	AKPID	Ground Speed (KT)	090	110	130	150	170	190
ALT	1050	1419	1641	1960	2280	FPM	500	600	700	800	900	1000
(HGT)	410	732	1005	1324	1644	FAF-MAPT	NA					

STRAIGHT-IN	CAT	A	B	C	D	E
	MDA / (OCH)	1040' / (410')				
VOR	ALS/NO ALS/ RVR ALS (m)	NIL / 1600 / NIL		NIL / 1900 / NIL		
	MDA / (OCH)	NA				
CIRCLING	ALS/NO ALS/ RVR ALS (m)	NA				

AIRAC AMDT 2605A1 14 MAY 26

SBCZ_IAC_00D 1/1
IAC VOR RWY 28

CHANGES: PROC. VAR. HDG.