

**INSTRUMENT APPROACH
CHART (IAC)**

BARRA DO GARÇAS / Barra do Garças (SBBW)

RNP RWY 07

(CAT A, B, C)

AD ELEV: 1160'

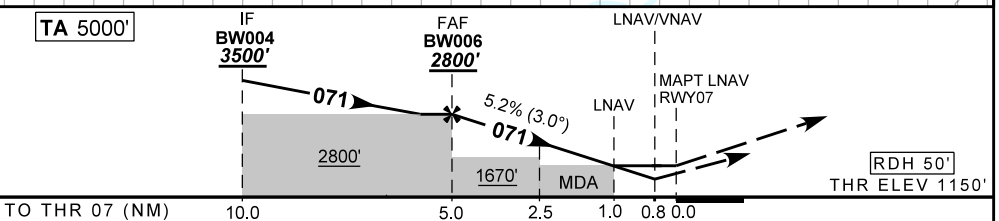
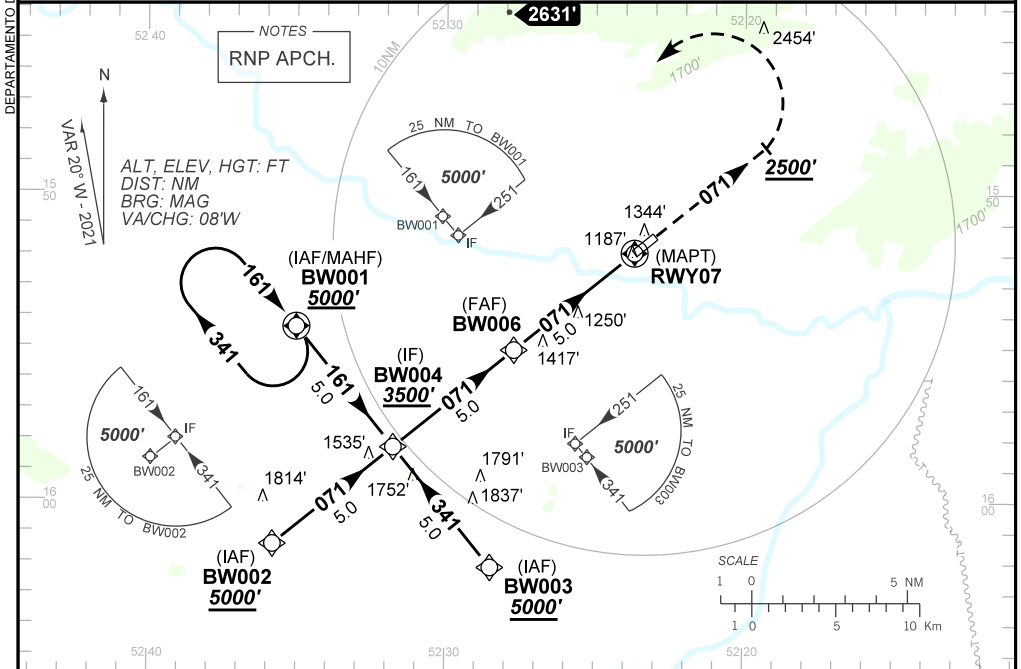
ATIS NIL	APP NIL	AFIS GARÇAS 125.90	GNDC NIL
-------------	------------	-----------------------	-------------

TEMP LNAV/VNAV MIN 0°C / MAX 50°C	FINAL CRS 071°	FAF: 2800'	LNAV/VNAV DA / (OCH): 1445' / (295')	LNAV MDA / (OCH): 1520' / (370')
--------------------------------------	-------------------	---------------	---	-------------------------------------

APCH Perdida: Subir para **5000'**. Manter proa **071** até **2500'**. Após, curvar à ESQUERDA direto BW001 para espera.

Missed APCH: Climb to **5000'**. Maintain heading **071** until **2500'**. After, turn LEFT direct BW001 for holding.

RMK: NIL.



BW006	4.0	3.0	2.5	1.0	0.8	RWY07	Ground Speed (KT)	090	110	130	150	170	190
2800	2474	2155	1996	1520	1445	ALT	FPM	500	600	700	800	NA	
1650	1324	1005	846	370	295	(HGT)	FAF-MAPT	NIL					

STRAIGHT-IN	CAT	A	B	C	D	E
	DA / (OCH)	1445' / (295')				
LNAV/VNAV	ALS/NO ALS/ RVR ALS (m)	NIL / 1400 / NIL				
	MDA / (OCH)	1520' / (370')				
LNAV	ALS/NO ALS/ RVR ALS (m)	NIL / 1600 / NIL			NIL / 1700 / NIL	
	MDA / (OCH)	NA				
CIRCLING	MDA / (OCH)	NA				
	VIS (m)	NA				

CHANGES: NEW CHART.

AIRAC AMDT 2107A1 15 JUL 21

SBBW_IAC_00G 1/1
IAC RNP RWY 07