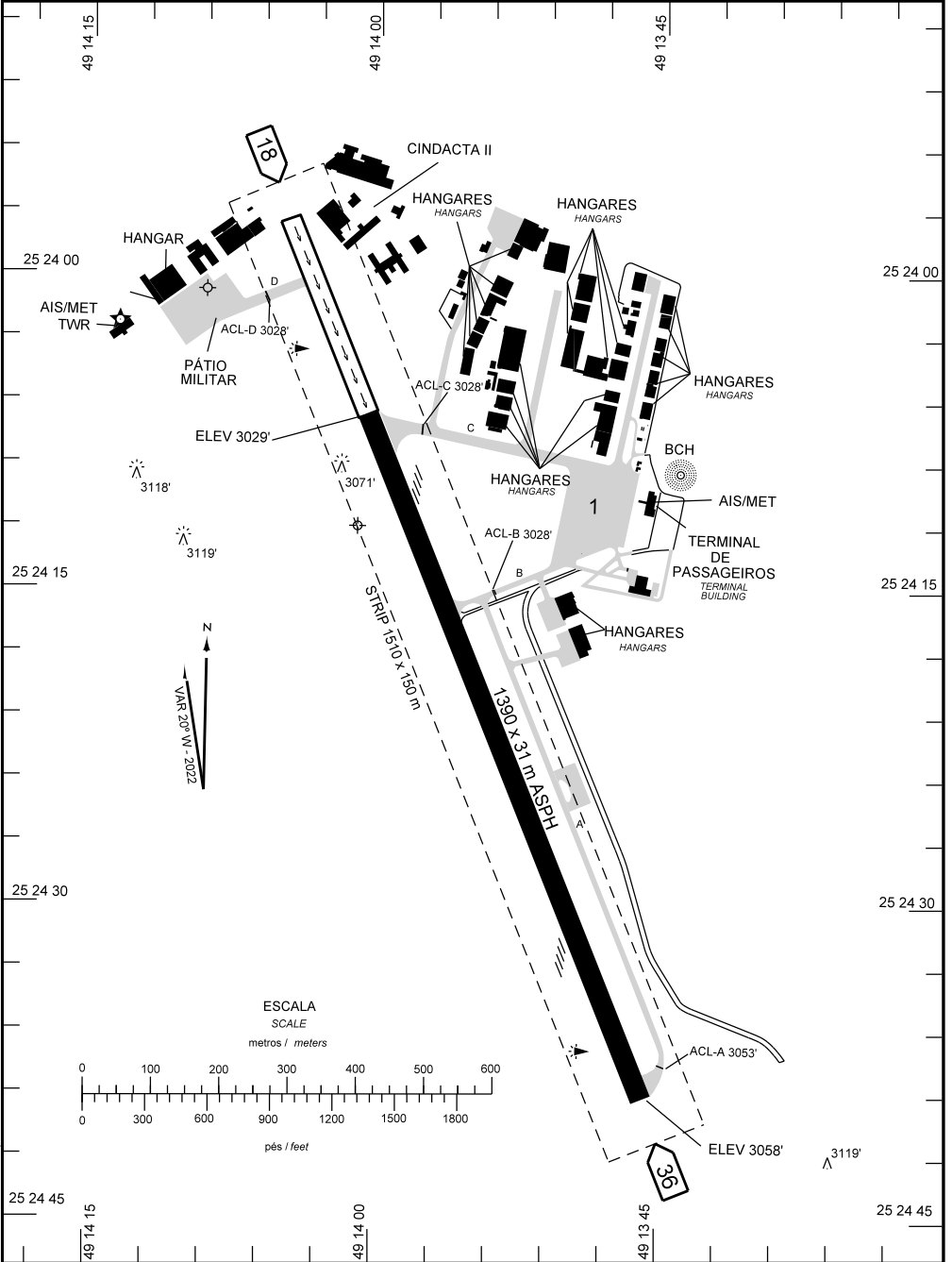


AD ELEV: 3059'

ARP S25 24 12 W049 14 01

ATIS 132.325	CLRD NIL	GNDC 121.80	TWR 118.90	APRON NIL
-----------------	-------------	----------------	---------------	--------------



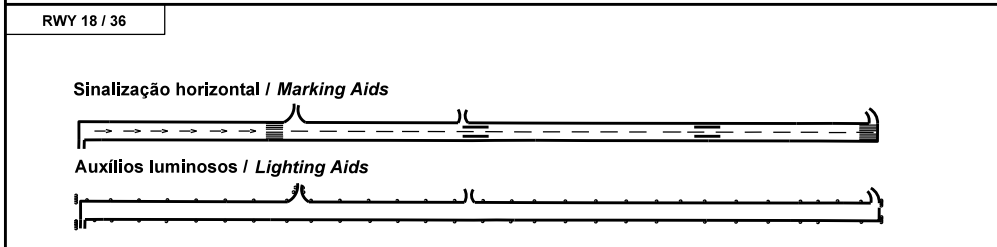
CHANGES: LAYOUT, REFS.

ADC - SBBI: INFORMAÇÕES COMPLEMENTARES / COMPLEMENTARY INFORMATION

CARACTERÍSTICAS FÍSICAS / PHYSICAL CHARACTERISTICS											
PISTA RUNWAY				DIMENSÕES(m) DIMENSIONS(m)				PCN	TIPO DE SUPERFÍCIE SURFACE KIND		
RWY	BRG MAG	Tipo Type	RCD	RWY	SWY	CWY	STRIP	RWY	RWY	SWY	
a	b	c	d	e	f	g	h	i	j	k	
18	178	NPA	2C	1390x31			1510 x 150	21/F/B/X/T	ASPH		
36	358	NPA	2C								

DISTÂNCIAS DECLARADAS, AUXÍLIOS VISUAIS E COORDENADAS DAS CABECEIRAS DECLARED DISTANCES, VISUAL AIDS AND THRESHOLD COORDINATES							
RWY	TORA(m)	TODA(m)	ASDA(m)	LDA(m)	AUXÍLIOS / AIDS	ALTURA GEODAL(m) GEOD HEIGHT(m)	COORDENADAS COORDINATES
18	1390	1390	1390	1090	PAPI	3,63	S25 24 06 W049 14 00
36	1090	1090	1390	1390	PAPI(2.99°)	3,63	S25 24 39 W049 13 46

SERVIÇO DE SALVAMENTO E CONTRAINCÊNDIO / RESCUE AND FIRE FIGHTING SERVICE: RFFS REQ - 05



RMK: 1) THR 18 DESLOCADA 300m
 2) MEHT: PAPI RWY 18: 25FT
 PAPI RWY 36: 59FT

CHANGES: LAYOUT: RFFS: