

**INSTRUMENT APPROACH
CHART (IAC)**

NATAL / Augusto Severo, MIL (SBNT)

AD ELEV: 171'

ILS X or LOC X RWY 16L

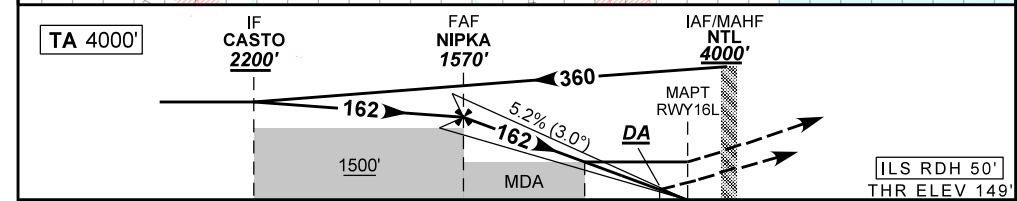
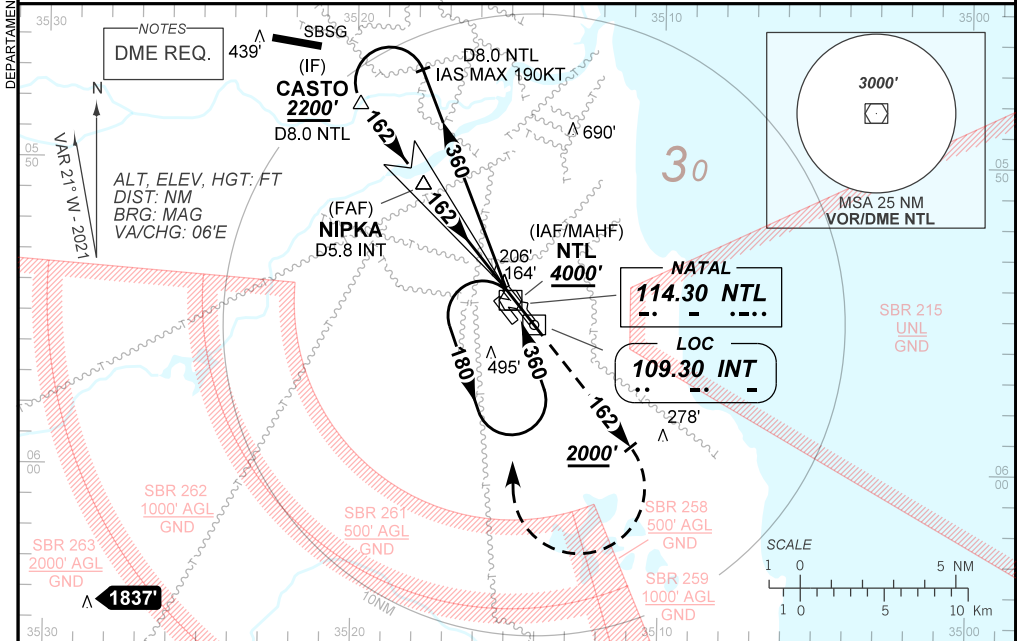
D-ATIS 132.65	APP NATAL 119.30 119.65 120.65 129.80		TWR NATAL 118.70 122.80	GNDC NATAL 121.90
-------------------------	-------------------------------------------------	--	-----------------------------------	-----------------------------

LOC INT 109.30 MHz	FINAL CRS 162°	FAF: 1570'	CAT I DA / (OCH): REFER TO MNM	LOC MDA / (OCH): 570' / (430')
------------------------------	--------------------------	----------------------	------------------------------------------	------------------------------------------

APCH Perdida: Subir para **4000'**. Manter a proa **162** até **2000'**. Após, curvar à DIREITA direto VOR NTL para espera.

Missed APCH: Climb to **4000'**. Maintain heading **162** until **2000'**. After, turn RIGHT direct to NTL VOR for holding.

RMK: NIL.



TO THR 16L (NM)	7.6	4.3	1.1	0.5	0.0
TO INT (DME)	9.1	5.8	2.6	2.0	1.5

	NIPKA	4.0	3.0	2.0	1.1	RWY16L	Ground Speed (KT)	090	110	130	150	170	190
	1570	1473	1154	836	570	ALT	FPM	NIL					
	1421	1324	1005	687	430	(HGT)	FAF-MAPT	NA					

STRAIGHT-IN	CAT	A	B	C	D	E
	DA / (OCH)	349' / (200')				386' / (237')
CAT I	ALS/NO ALS/ RVR ALS (m)	NIL / 1200 / NIL				
	MDA / (OCH)	570' / (430')				
LOC	ALS/NO ALS/ RVR ALS (m)	NIL / 1600 / NIL		NIL / 2000 / NIL		
	MDA / (OCH)	NA				
CIRCLING	MDA / (OCH)	NA				
	VIS (m)	NA				