

**INSTRUMENT APPROACH
CHART (IAC)**

PARAUPEBAS / Carajás (SBCJ)

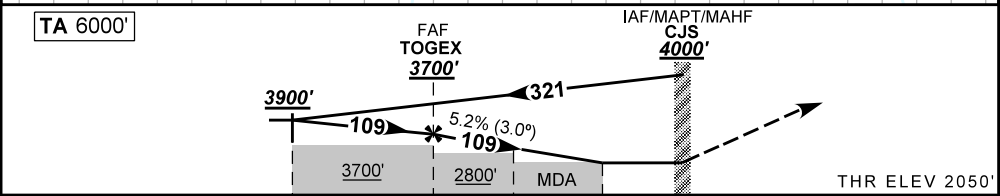
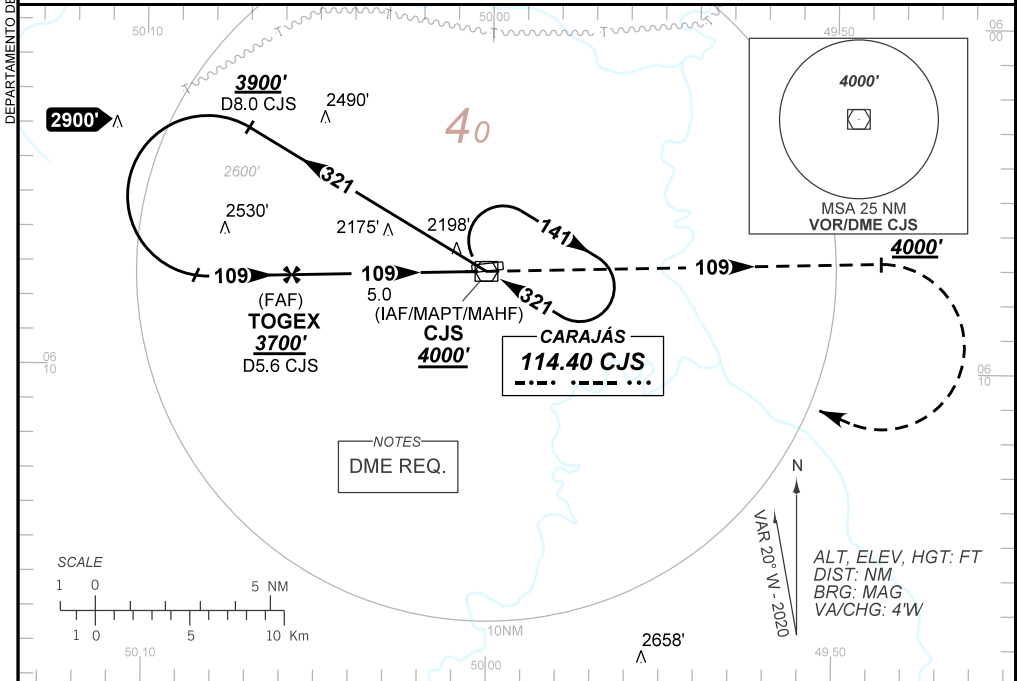
AD ELEV: 2064'

VOR Z RWY 10

ATIS NIL	APP NIL	AFIS CARAJÁS 131.70	GNDC NIL
VOR CJS 114.40 MHz	FINAL CRS 109°	FAF: 3700'	VOR MDA / (OCH): 2530' / (480')

APCH Perdida: Manter o rumo **109** até **4000'**. Então, curvar à DIREITA para espera no VOR CJS.
Missed APCH : Maintain course **109** until **4000'**. Then, turn RIGHT direct to CJS VOR for holding.

RMK: NIL.



TO THR 10 (NM)	7.4	5.0	2.2	1.3	0.0	THR ELEV 2050'
TO CJS (DME)	8.0	5.6	2.8	1.9	0.6	

	TOGEX	4.0	3.0	2.2	1.3	RWY10	Ground Speed (KT)	090	110	130	150	170	190
	3700	3374	3005	2808	2530	ALT	FPM	500	600	700	800	900	1000
	1650	1324	1005	758	480	(HGT)	FAF-MAPT	NA					

STRAIGHT-IN	CAT	A	B	C	D	E
	MDA / (OCH)	2530' / (480')				
VOR	ALS/NO ALS/ RVR ALS (m)	NIL / 2200 / NIL				
CIRCLING	MDA / (OCH)	NA				
	VIS (m)					