

**INSTRUMENT APPROACH
CHART (IAC)**

RIO BRANCO / Plácido de Castro, INTL (SBRB)

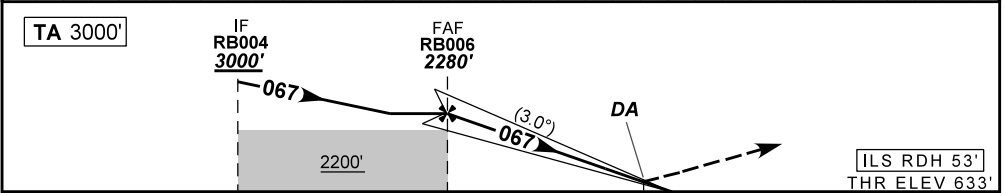
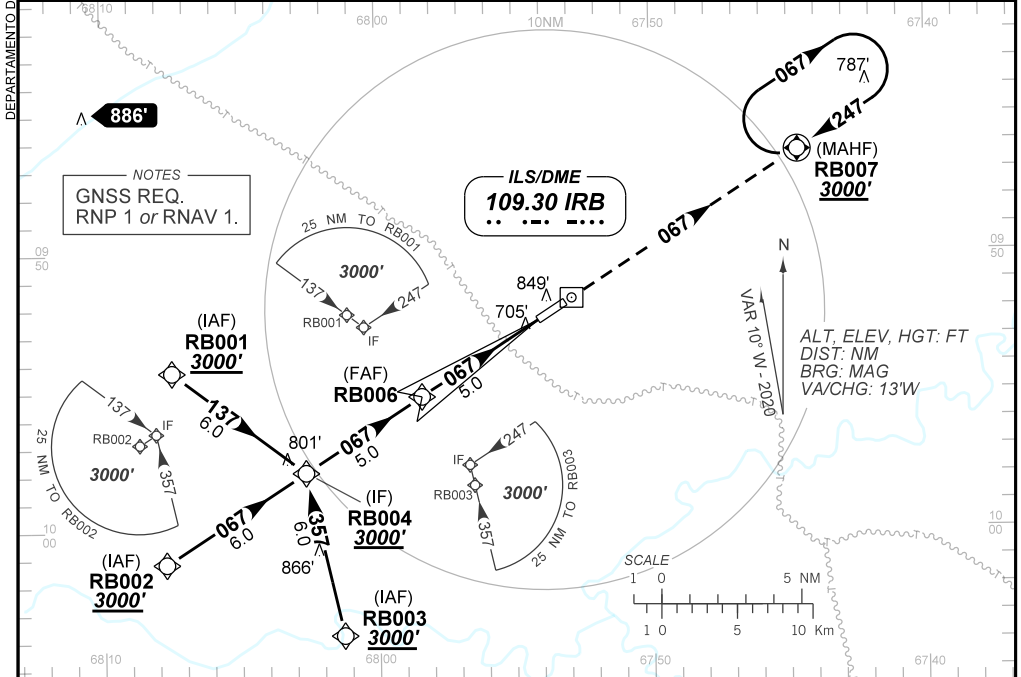
AD ELEV: 633'

ILS V RWY 06

D-ATIS NIL	APP RIO BRANCO 119.90	TWR RIO BRANCO 118.70	GND C NIL
ILS/DME IRB 109.30 MHz	FINAL CRS 067°	FAF: 2280'	CAT I DA / (OCH): REFER TO MNM

APCH Perdida: Subir para **3000'**. Manter rumo **067** até RB007 para espera.
Missed APCH: Climb to **3000'**. Maintain course **067** until RB007 for holding.

RMK: (*)VIS RVR ALS 550m para APCH utilizando Diretor de Voo, Piloto Automático ou Head-Up Display (HUD).
(*)VIS RVR ALS 550m for APCH using a Flight Director, Autopilot or Head-Up Display (HUD).



TO THR 06 (NM)	10.0	5.0	0.0
TO IRB (DME)	11.4	6.4	1.4

RB006	4.0	3.0	2.0	0.7	0.6	RWY06	Ground Speed (KT)	090	110	130	150	170	190
2280	1960	1641	1323	902	883	ALT	FPM	500	600	700	800	900	1000
1647	1327	1008	690	269	250	(HGT)	FAF-MAPT	NA					

STRAIGHT-IN	CAT	A	B	C	D	E
CAT I	DA / (OCH)	883' / (250')				902' / (269')
	ALS/NO ALS/ RVR ALS (m)	800 / 1300 / 700(*)				
CIRCLING	MDA / (OCH)	NA				
	VIS (m)	NA				

CHANGES: DA, LAYOUT, PROC.