

**INSTRUMENT APPROACH  
CHART (IAC)**

**AD ELEV: 281'**

**USO EXCLUSIVO ACFT MILITARES  
MILITARY ACFT ONLY**

**CACEQUI / Saicã, MIL (SSCQ)**

**RNP 029**

**PINS - (CAT H)**

DEPARTAMENTO DE CONTROLE DO ESPAÇO AÉREO

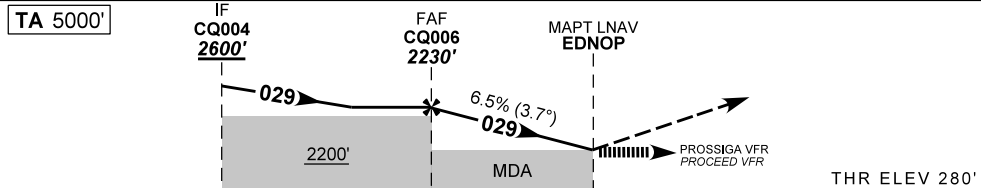
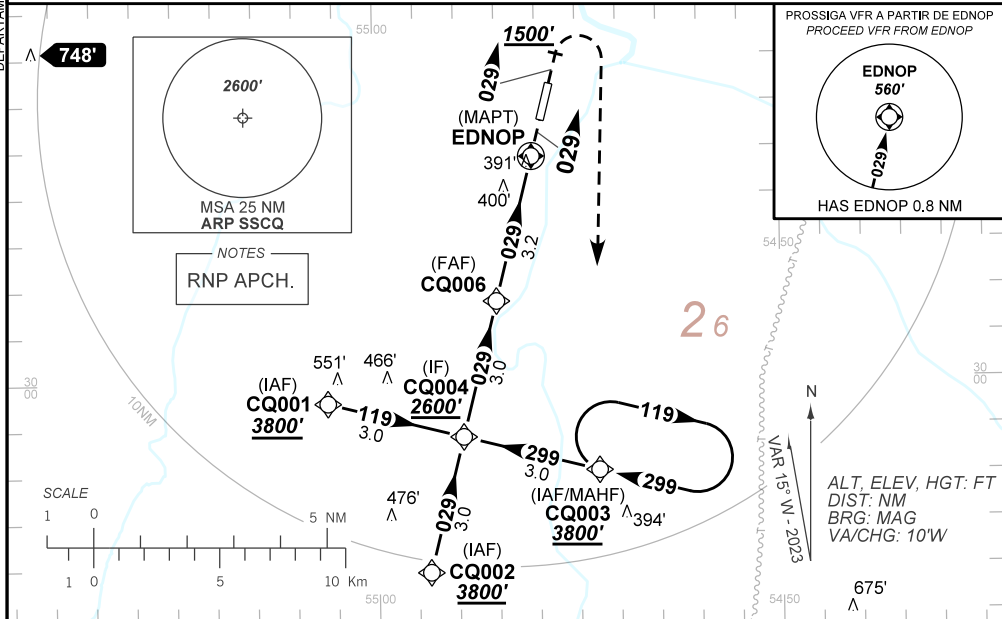
ATIS SANTA MARIA <b>127.75</b>	APP SANTA MARIA <b>119.35 121.35</b>		TWR <b>NIL</b>	GNDC <b>NIL</b>
<b>N/A</b>	FINAL CRS <b>029°</b>	FAF: <b>2230'</b>	<b>N/A</b>	LNAV RASS (SBSM) MDA / (OCH): <b>960' / (680')</b>

APCH Perdida: Subir para **3800'**. Manter proa **029** até **1500'**. Após, curvar à DIREITA direto CQ003 para espera.

Missed APCH: Climb to **3800'**. Maintain heading **029** until **1500'**. After, turn RIGHT direct CQ003 for holding.

RMK: Informações complementares no verso.

See reverse side for additional information.



TO MAPT (NM)	6.2	3.2	0.0
TO THR 02 (NM)	7.0	4.0	0.8

	CQ006	2.0	1.0	EDNOP	MAPT	Ground Speed (KT)	060	070	080	090	100	110
	2230	1750	1355	960	ALT	FPM	390	450	520	580	NA	NA
					(HGT)	FAF-MAPT						

STRAIGHT-IN	CAT	H
LNAV RASS (SBSM)	MDA / (OCH)	960' / (680')
	VIS (m)	1500
CIRCLING	MDA / (OCH)	NA
	VIS (m)	

CHANGES: AD ELEV. THR INFO.

— R M K —

- 1 - Requerido FPL "Y" com mudança de regras de voo para VFR em EDNOP.  
*FPL "Y" required with flight rules change to VFR at EDNOP.*
- 2 - Procedimento exclusivo para helicópteros.  
*Exclusive procedure for helicopters.*
- 3 - É de responsabilidade do piloto em comando a separação com obstáculos e terreno entre EDNOP e a THR02.  
*It is responsibility of the pilot in command to provide own separation with obstacles and terrain between EDNOP and THR02.*
- 4 - Utilizar o ajuste-altímetro de SBSM.  
*Use altimeter setting from SBSM.*

DEPARTAMENTO DE CONTROLE DO ESPAÇO AÉREO

CHANGES: AD, ELEV, THR, INFO.