

**INSTRUMENT APPROACH  
CHART (IAC)**

**NATAL / Campo Augusto Severo, MIL (SBNT)**

**USO EXCLUSIVO ACFT MILITARES  
MILITARY ACFT ONLY**

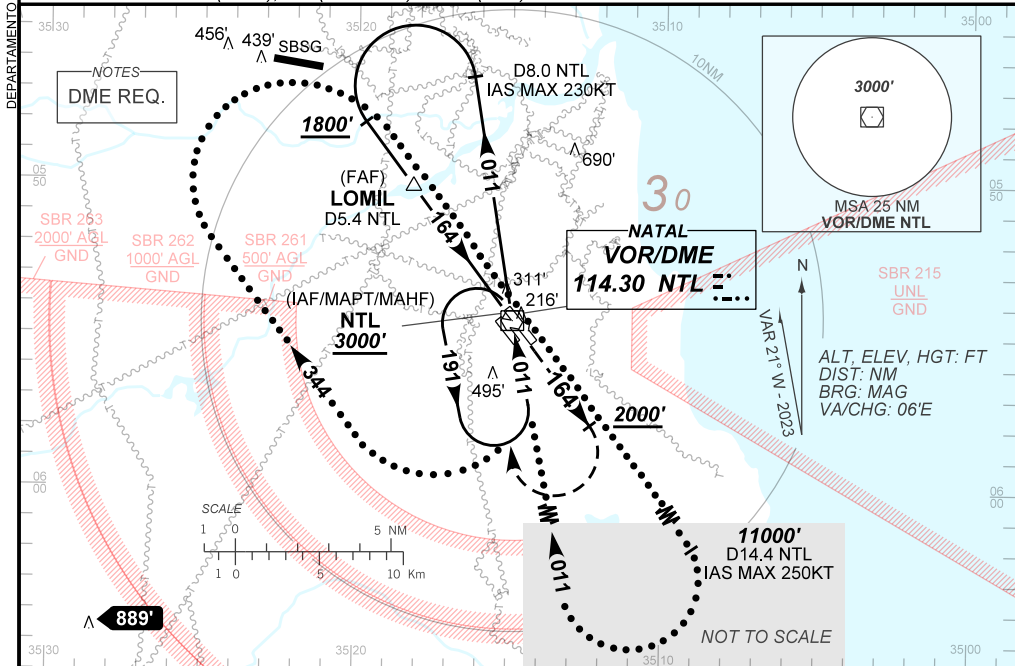
**VOR Z RWY 16L**

**AD ELEV: 169'**

D-ATIS <b>132.65</b>	APP NATAL <b>119.30 119.65 120.65 129.80</b>			TWR NATAL <b>118.70 122.80</b>	GNDC NATAL <b>121.90</b>
VOR NTL <b>114.30 MHz</b>	FINAL CRS <b>164°</b>	FAF: <b>1790'</b>	N/A	VOR MDA / (OCH): <b>560' / (420')</b>	

APCH Perdida: Subir para **3000'**. Manter a RDL **164** do VOR NTL até **2000'**. Após, curvar à DIREITA direto VOR NTL para esquerda. Missed APCH: Climb to **3000'**. Maintain **164** RDL NTL VOR until **2000'**. After, turn RIGHT direct to NTL VOR for holding.

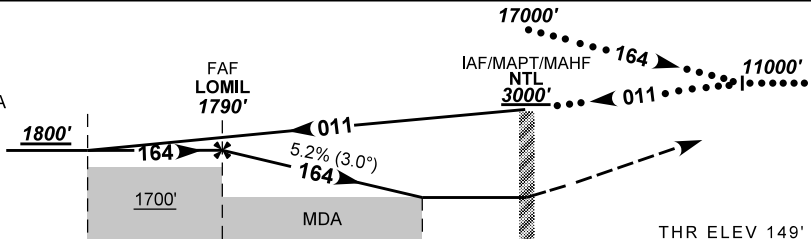
RMK: Proibido circular setores N (norte), NE (nordeste) e E (leste) do AD.  
Prohibited to circle N (north), NE (northeast) and E (east) sectors from AD.



**TA 4000'**

PENETRAÇÃO  
IAS MAX 250KT  
RAZÃO DE DESCIDA  
2500 FPM

PENETRATION  
IAS MAX 250KT  
RATE OF DESCENT  
2500 FPM



TO THR 16L (NM)	7.6	5.0	1.2	0.0	THR ELEV 149'
TO NTL (DME)	8.0	5.4	1.6	0.4	

	LOMIL	4.0	3.0	2.0	1.2	RW16L	Ground Speed (KT)	090	110	130	150	170	190
	1790	1473	1154	836	560	ALT	FPM	500	600	700	800	900	1000
	1641	1324	1005	687	420	(HGT)	FAF-MAPT	NA					

STRAIGHT-IN	CAT	A	B	C	D	E	
	MDA / (OCH)	560' / (420')					
VOR	ALS/NO ALS/ RVR ALS (m)	NIL / 1600 / NIL			NIL / 1900 / NIL		
	MDA / (OCH)	800' / (630')			910' / (740')	980' / (810')	1190' / (1020')
CIRCLING	VIS (m)	1600			3200	4000	4800

AIRAC AMDT 2310A2 05 OCT 23

SBNT\_IAC\_01W 1/1  
IAC VOR Z RWY 16L

**USO EXCLUSIVO ACFT MILITARES / MILITARY ACFT ONLY**

DEPARTAMENTO DE CONTROLE DO ESPAÇO AÉREO  
CHANGES: AD ELEV. MNM OPR. VAR. THR COORD.