

**INSTRUMENT APPROACH  
CHART (IAC)**

**BELÉM / Val de Cans - Júlio Cezar Ribeiro, INTL (SBBE)**

**AD ELEV: 56'**

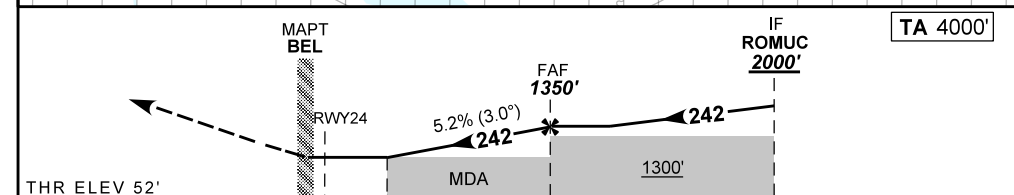
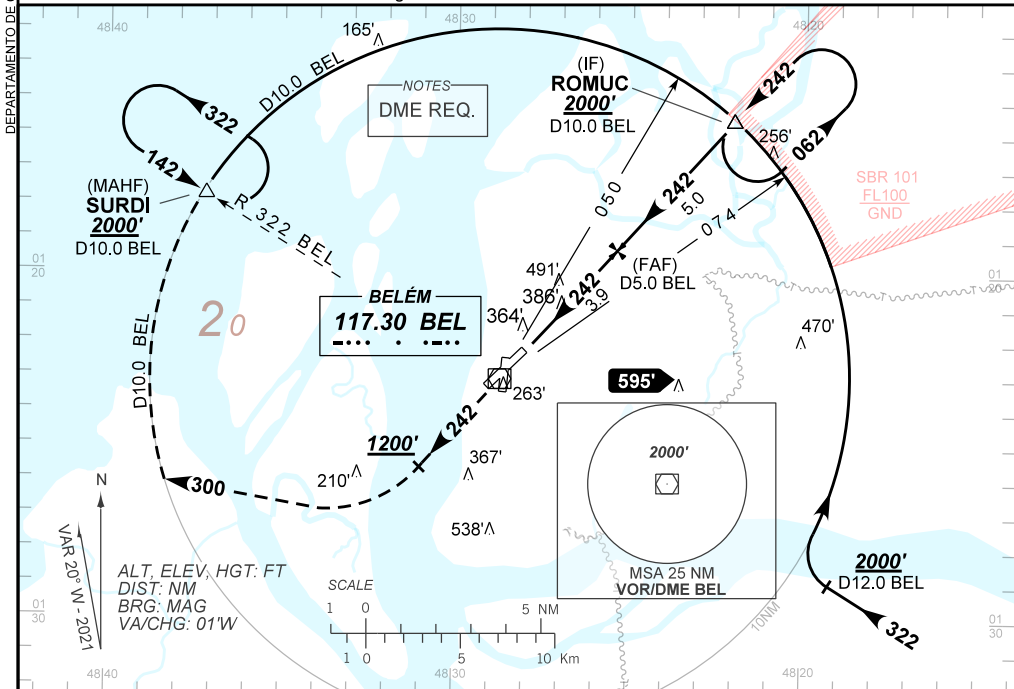
**VOR RWY 24**

D-ATIS <b>127.60</b>	APP BELÉM <b>119.05 119.50</b>		TWR BELÉM <b>118.70</b>	GNDC BELÉM <b>121.90</b>
-------------------------	-----------------------------------	--	----------------------------	-----------------------------

VOR BEL <b>117.30 MHz</b>	FINAL CRS <b>242°</b>	FAF: <b>1350'</b>	N/A	VOR MDA / (OCH): <b>740' / (690')</b>
------------------------------	--------------------------	----------------------	-----	--

APCH Perdida: Subir para **2000'**. Manter o rumo **242** até **1200'**. Após, curvar à DIREITA na proa **300** para interceptar o arco de 10 NM do VOR BEL até SURDI para espera.

Missed APCH: Climb to **2000'**. Maintain course **242** until **1200'**. After, turn RIGHT heading **300** to intercept 10NM arc BEL VOR until SURDI for holding.



THR ELEV 52'	0.0	2.0	3.9	8.9	TO THR 24 (NM)
	1.1	3.1	5.0	10.0	TO BEL (DME)

RWY24	2.0	3.0	FAF			Ground Speed (KT)	090	110	130	150	170	190
ALT	740	1057	1350			FPM	500	600	700	800	900	NA
(HGT)	690	1005	1298			FAF-MAPT	NA					

STRAIGHT-IN	CAT	A	B	C	D	E
VOR	MDA / (OCH)	740' / (690')				NA
	ALS/NO ALS/ RVR ALS (m)	NIL / 1600 / NIL		NIL / 3200 / NIL		
CIRCLING	MDA / (OCH)	NA				
	VIS (m)					