

**INSTRUMENT APPROACH  
CHART (IAC)**

**SANTA MARIA / Santa Maria (SBSM)**

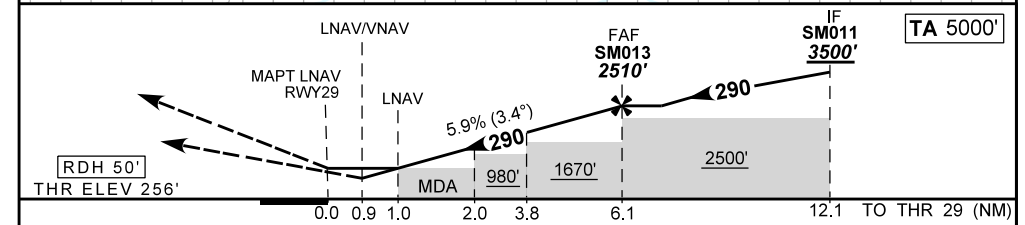
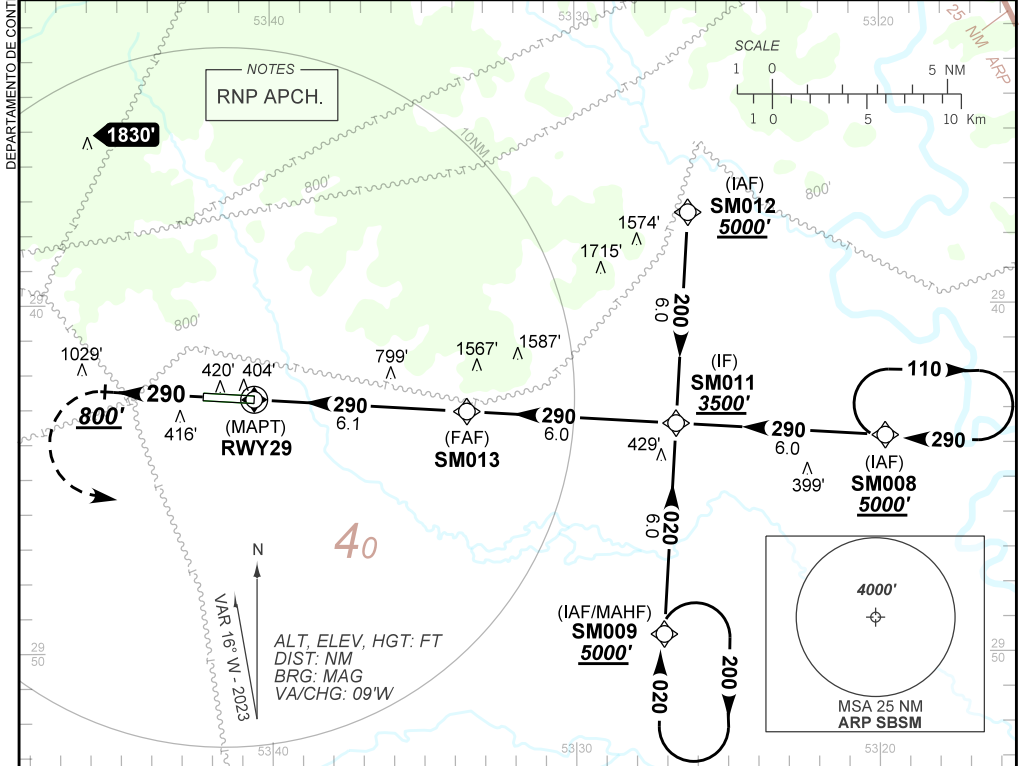
**AD ELEV: 289'**

**RNP RWY 29**

<b>ATIS</b> 127.75	<b>APP SANTA MARIA</b> 119.35 121.35	<b>TWR SANTA MARIA</b> 118.30 118.85	<b>AFIS SANTA MARIA</b> 119.35 121.35 118.30	<b>GNDC</b> NIL
-----------------------	---	---	---	--------------------

<b>TEMP LNAV/VNAV</b> MIN -20°C / MAX 50°C	<b>FINAL CRS</b> 290°	<b>FAF:</b> 2510'	<b>LNAV/VNAV</b> DA / (OCH): 615' / (359')	<b>LNAV</b> MDA / (OCH): 650' / (400')
---	--------------------------	----------------------	---	---

**APCH Perdida:** Subir para **5000'**. Manter rumo **290°** até **800'**. Curvar à **ESQUERDA** direto SM009 para espera.  
**Missed APCH:** Climb to **5000'**. Maintain course **290°** up to **800'**. Turn **LEFT** direct **SM009** for holding.



<b>RWY29</b>	1.0	2.0	3.0	3.8	5.0	SM013	<b>IF SM011</b>	<b>TA 5000'</b>
<b>ALT</b>	650	1028	1389	1678	2111	2510		
<b>(HGT)</b>	400	772	1133	1422	1855	2254		
<b>Ground Speed (KT)</b>							090	110
<b>FPM</b>							500	600
<b>FAF-MAPT</b>								NA

<b>STRAIGHT-IN</b>	<b>CAT</b>	<b>A</b>	<b>B</b>	<b>C</b>	<b>D</b>	<b>E</b>
<b>LNAV / VNAV</b>	<b>DA / (OCH)</b>	615' / (359')				NA
	ALS/NO ALS/ RVR ALS (m)	NIL / 1600 / NIL				
<b>LNAV</b>	<b>MDA / (OCH)</b>	650' / (400')				
	ALS/NO ALS/ RVR ALS (m)	NIL / 1600 / NIL		NIL / 1800 / NIL		
<b>CIRCLING</b>	<b>MDA / (OCH)</b>	NA				
	VIS (m)					

AIRAC AMDT 2401A1 25 JAN 24

SBSM\_IAC\_00T 1/1  
IAC RNP RWY 29

CHANGES IDENT.

DEPARTAMENTO DE CONTROLE DO ESPAÇO AÉREO