

**INSTRUMENT APPROACH  
CHART (IAC)**

**BOA VISTA / Atlas Brasil Cantanhede, INTL (SBBV)**

**VOR Y RWY 26**

**AD ELEV: 276'**

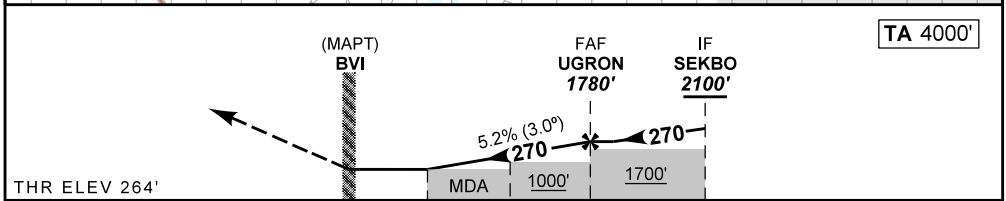
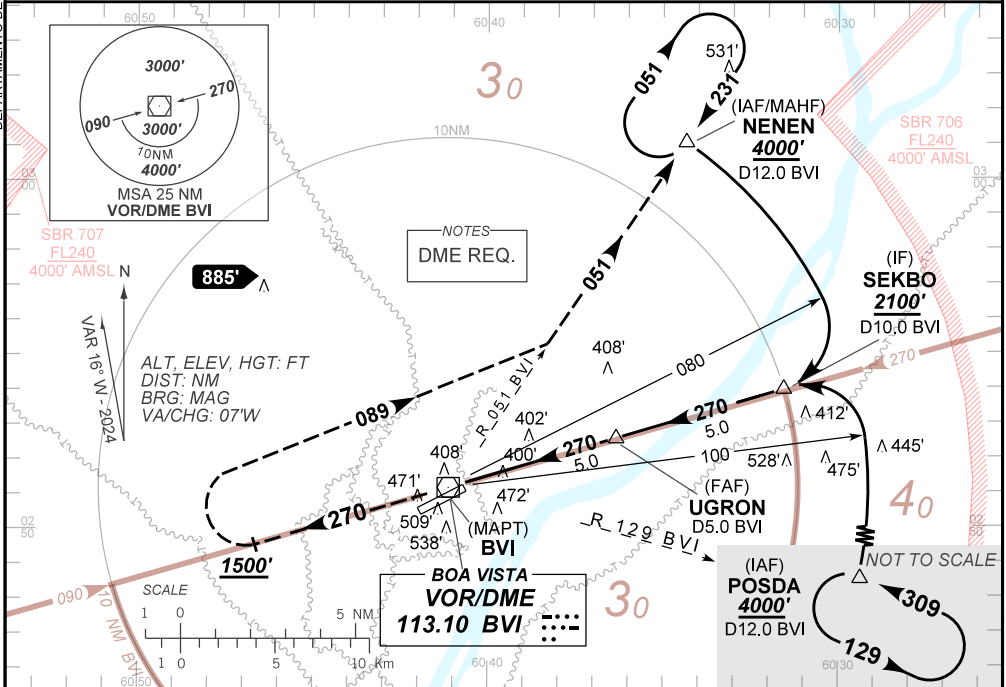
D-ATIS <b>NIL</b>	APP BOA VISTA <b>120.10</b>	TWR BOA VISTA <b>118.10</b>	GNDC BOA VISTA <b>NIL</b>
----------------------	--------------------------------	--------------------------------	------------------------------

VOR BVI <b>113.10 MHz</b>	FINAL CRS <b>270°</b>	FAF: <b>1780'</b>	N/A	VOR/DME MDA / (OCH): <b>750' / (490')</b>
------------------------------	--------------------------	----------------------	-----	--

APCH Perdida: Subir para **4000'**. Manter a RDL **270** do VOR BVI até **1500'**. Após, curvar à DIREITA, proa **089** para interceptar a RDL **051** VOR BVI até NENEN para espera.

Missed APCH: Climb to **4000'**. Maintain **270** RDL BVI VOR until **1500'**. Then, turn RIGHT, heading **089** to intercept **051** RDL BVI VOR until NENEN for holding.

DEPARTAMENTO DE CONTROLE DO ESPAÇO AÉREO



THR ELEV 264'	0.0	1.4	2.2	4.6	9.6	TO THR 26 (NM)
	0.4	1.8	2.6	5.0	10.0	TO BVI (DME)

RWY26	1.4	2.2	3.0	4.0	UGRON	Ground Speed (KT)	090	110	130	150	170	190
ALT	750	1005	1269	1588	1780	FPM	500	600	700	800	900	1000
(HGT)	490	741	1005	1324	1516	FAF-MAPT	NA					

STRAIGHT-IN	CAT	A	B	C	D	E
	MDA / (OCH)	750' / (490')				
VOR	ALS/SNO ALS/ RVR ALS (m)	NIL / 1600 / NIL		NIL / 2300 / NIL		
CIRCLING	MDA / (OCH)	NA				
	VIS (m)					

CHANGES: ALT MIN.