

**INSTRUMENT APPROACH CHART (IAC)**

**BELÉM / Val de Cans - Júlio Cezar Ribeiro, INTL (SBBE)**

**AD ELEV: 56'**

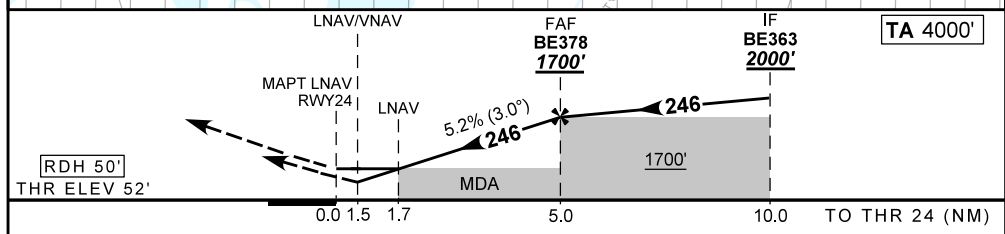
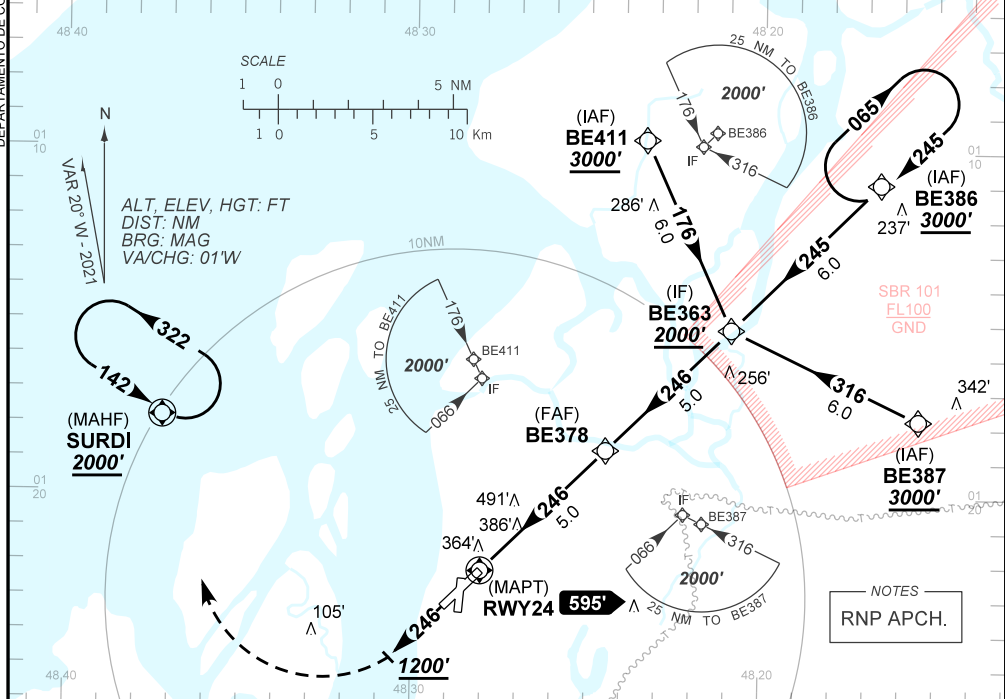
**RNP RWY 24**

D-ATIS <b>127.60</b>	APP BELÉM <b>119.05 119.50</b>	TWR BELÉM <b>118.70</b>	GNDC BELÉM <b>121.90</b>
-------------------------	-----------------------------------	----------------------------	-----------------------------

TEMP LNAV/VNAV <b>MIN 10°C / MAX 50°C</b>	FINAL CRS <b>246°</b>	FAF: <b>1700'</b>	LNAV/VNAV DA / (OCH): <b>592' / (540')</b>	LNAV MDA / (OCH): <b>650' / (600')</b>
--	--------------------------	----------------------	---	---

APCH Perdida: Subir para **2000'**. Manter rumo **246** até **1200'**. Após, curvar à DIREITA direto SURDI para espera.  
 Missed APCH: Climb to **2000'**. Maintain course **246** until **1200'**. Then, turn RIGHT direct to SURDI for holding.

DEPARTAMENTO DE CONTROLE DO ESPAÇO AÉREO



RWY24	1.7	2.0	3.0	4.0	BE378	Ground Speed (KT)	090	110	130	150	170	190
ALT	650	739	1057	1376	1700	FPM	500	600	700	800	900	NA
(HGT)	600	687	1005	1324	1648	FAF-MAPT	NIL					

STRAIGHT-IN	CAT	A	B	C	D	E
	DA / (OCH)	592' / (540')				
LNAV/VNAV	ALS/NO ALS/ RVR ALS (m)	NIL / 2400 / NIL				
	MDA / (OCH)	650' / (600')				
LNAV	ALS/NO ALS/ RVR ALS (m)	NIL / 1600 / NIL		NIL / 2700 / NIL		
	MDA / (OCH)	NA				
CIRCLING	VIS (m)	NA				

CHANGES: MINM OPR. PROC. RNMK TAA