

INSTRUMENT APPROACH CHART (IAC)

NATAL / Campo Augusto Severo, MIL (SBNT)

VOR W RWY 16L

(CAT A,B)

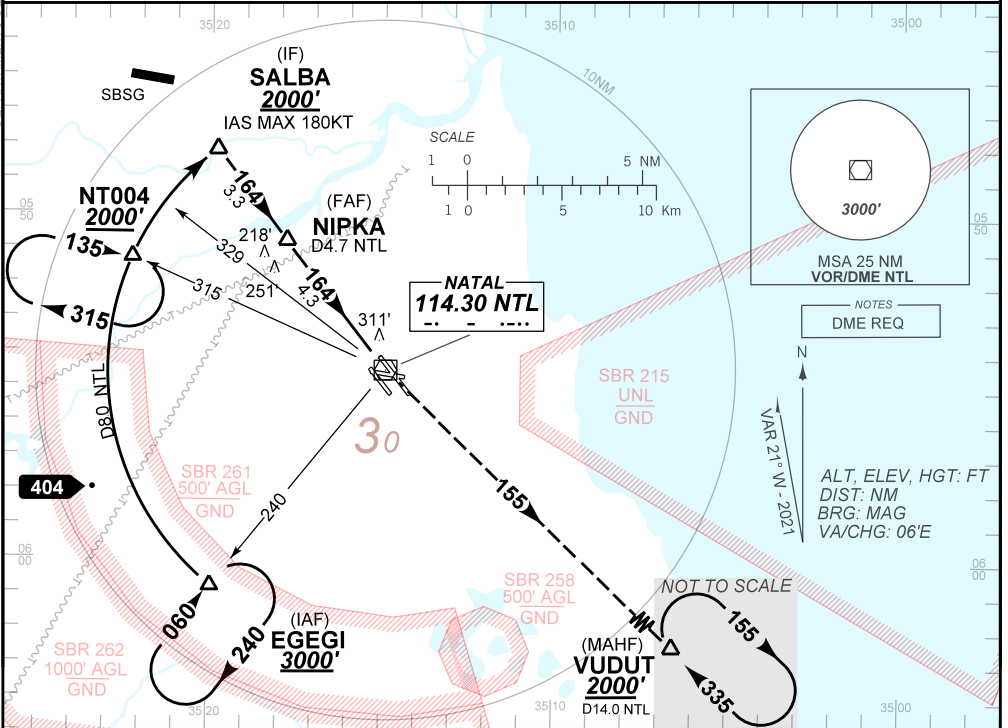
AD ELEV: 171'

**USO EXCLUSIVO ACFT MILITARES
MILITARY ACFT ONLY**

D-ATIS 132.65	APP NATAL 119.30 119.65 120.65 129.80	TWR NATAL 118.70 122.80 (MIL)	GNDC NATAL 121.90
VOR NTL 114.30 MHz	FINAL CRS 164°	FAF 1570'	N/A
			VOR/DME MDA / (OCH): 560' / (420')

APCH Perdida: Subir para **2000'**. Manter rumo **155** até VUDUT para espera.

Missed APCH: Climb to **2000'**. Maintain course **155** up to VUDUT for holding.



TA 4000'	IF SALBA 2000'	FAF NIPKA 1570'	MAPT RWY16L NTL		THR ELEV 149'
	164	164	5.2% (3.0°)		
	1500'	800'	MDA		
TO THR 16L (NM)	7.6	4.3	2.1	1.2	0.0
TO NTL (DME)	8.0	4.7	2.5	1.6	0.4
	NIPKA 4.0	3.0	2.1	1.2	RWY16L
	1570	1473	1154	867	560
	1421	1324	1005	718	420
					(HGT)
					KT
					090
					110
					130
					150
					170
					190
					FPM
					500
					600
					700
					NA
					FAF-MAPT
					NA

STRAIGHT-IN	CAT	A	B	C	D	E
VOR	MDA / (OCH)	560' / (420')			NA	
	ALS/NO ALS/RVR ALS (m)	NIL / 1700 / NIL				
CIRCLING	MDA / (OCH)	NA				
	VIS (m)					

AIRAC AMDT 2205A1 19 MAY 22

USO EXCLUSIVO ACFT MILITARES / MILITARY ACFT ONLY

**SBNT_IAC_01E 1/1
IAC VOR W RWY 16L**

DEPARTAMENTO DE CONTROLE DO ESPAÇO AÉREO

CHANGES: ALT. LAYOUT.