

DEPARTURE CHART
INSTRUMENT (SID)

RIO BRANCO / Plácido de Castro, INTL (SBRB)

RWY 06 / 24

OMNI

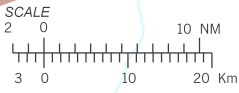
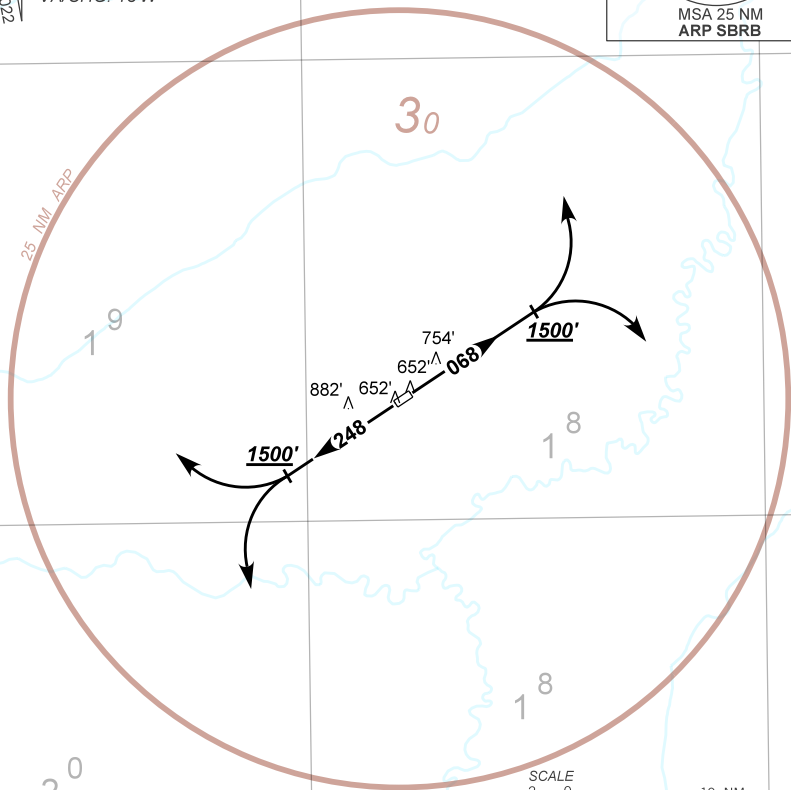
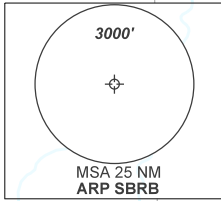
AD ELEV: 633'

TA 3000'	D-ATIS NIL	TWR RIO BRANCO 118.70	APP RIO BRANCO 119.90	ACC AMAZÔNICO 126.50 135.25
----------	---------------	--------------------------	--------------------------	--------------------------------

DEPARTAMENTO DE CONTROLE DO ESPAÇO AÉREO

N
VAR 11° W - 2022

ALT, ELEV, HGT: FT
DIST: NM
BRG: MAG
VA/CHG: 13°W



CHANGES: NEW CHART
1109

- 1 - Não permitidas curvas antes do DER.
Turns before DER not allowed.
- 2 - Obstáculos próximos não considerados para o cálculo do gradiente de subida (PDG):
Close-in obstacles not considered for procedure gradient (PDG):
Árvore / Tree: a partir de / from THR06, AZM349, DIST 162m, ELEV 652'.
Árvore / Tree: a partir de / from THR24, AZM338, DIST 132m, ELEV 652'.