

**INSTRUMENT APPROACH
CHART (IAC)**

SÃO JOSÉ DOS CAMPOS / Professor Urbano Ernesto Stumpf (SBSJ)

**USO EXCLUSIVO ACFT MILITARES
MILITARY ACFT ONLY**

VOR Y RWY 16

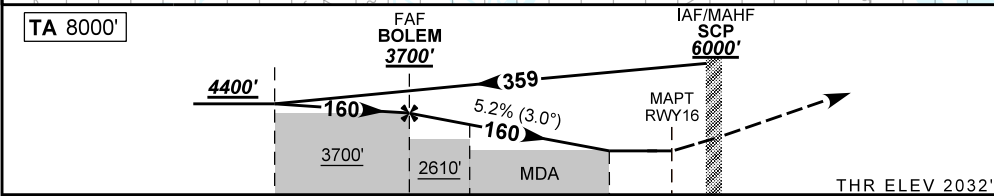
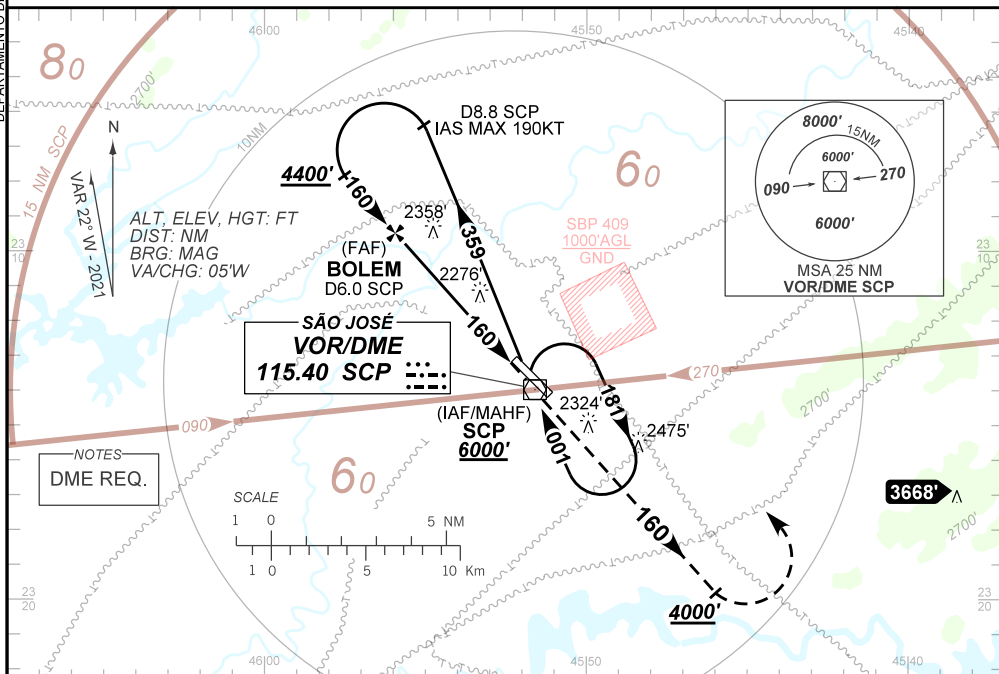
AD ELEV: 2123'

D-ATIS 127.925	APP SÃO PAULO 124.15 134.15 134.90 129.00	APP RIO 121.35 123.90 124.70 125.60	TWR SÃO JOSÉ 118.50	GNDC SÃO JOSÉ 121.95 122.50
VOR SCP 115.40 MHz	FINAL CRS 160°	FAF: 3700'	N/A	VOR MDA / (OCH): 2540' / (510')

APCH Perdida: Subir para **6000'**. Manter proa **160** até **4000'**. Após, curvar à ESQUERDA até o VOR SCP para espera.

Missed APCH: Climb to **6000'**. Maintain heading **160** until **4000'**. After, turn LEFT until SCP VOR for holding.

DEPARTAMENTO DE CONTROLE DO ESPAÇO AEREO



TO THR 16 (NM)	7.8	5.0	3.1	1.4	0.0
TO SCP (DME)	8.8	6.0	4.1	2.4	1.0

BOLEM	4.0	3.1	2.0	1.4	RWY16						
3700	3556	3080	2719	2540	ALT						
1668	1324	1048	687	510	(HGT)						

Ground Speed (KT)	090	110	130	150	170	190
FPM	500	600	700	800	900	1000
FAF-MAPT	NA					

STRAIGHT-IN	CAT	A	B	C	D	E
	MDA / (OCH)	2540' / (510')				
VOR	ALS / NO ALS / RVR ALS (m)	1200 / 1600 / NIL		1900 / 2400 / NIL		
CIRCLING	MDA / (OCH)	NA				
	VIS (m)					

CHANGES: LAYOUT, PROC, THR ELEV.