

DEPARTURE CHART
INSTRUMENT (SID)

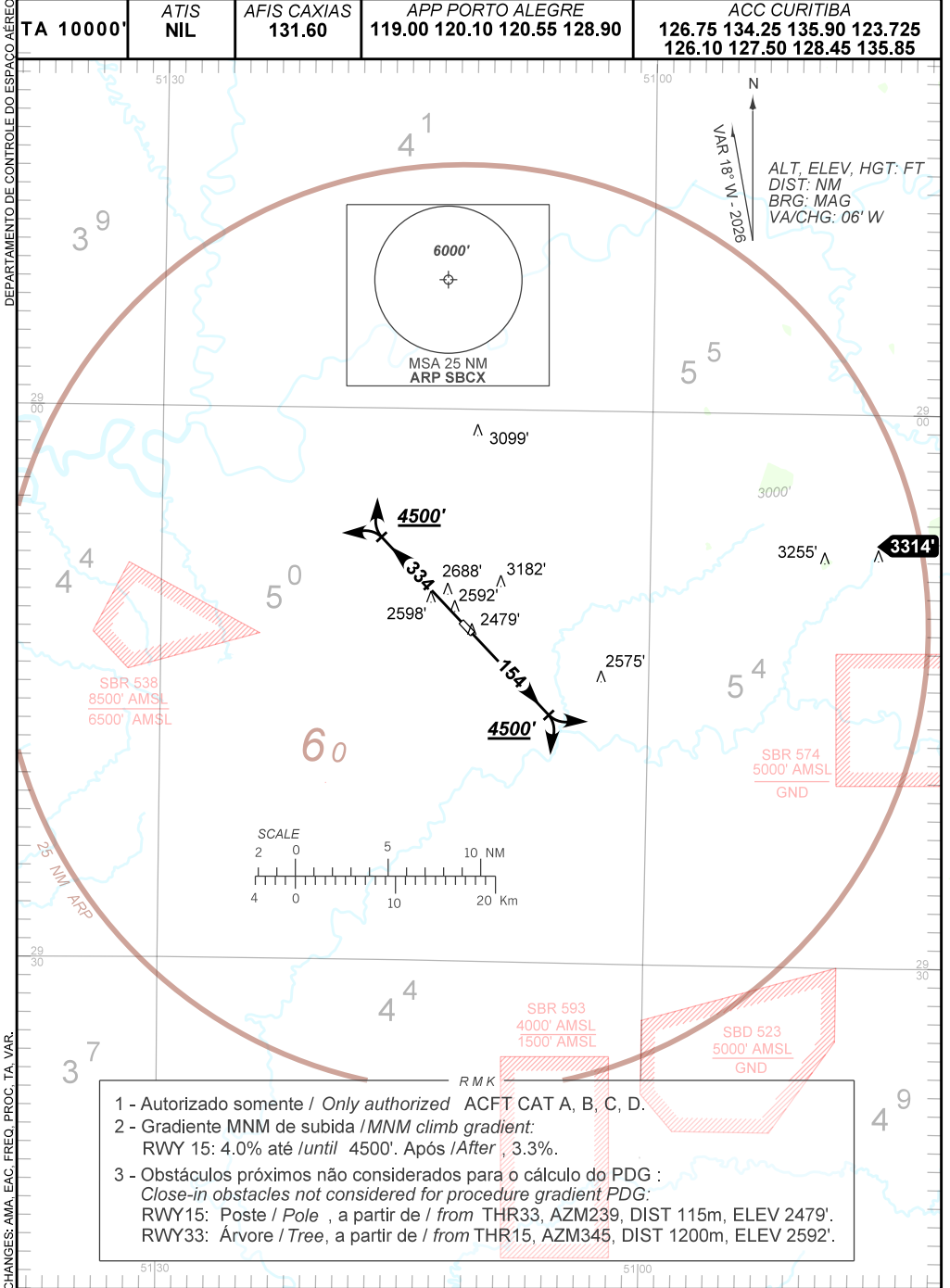
CAXIAS DO SUL / Hugo Cantergiani (SBCX)

RWY 15/33

OMNI

AD ELEV: 2474'

TA 10000'	ATIS NIL	AFIS CAXIAS 131.60	APP PORTO ALEGRE 119.00 120.10 120.55 128.90	ACC CURITIBA 126.75 134.25 135.90 123.725 126.10 127.50 128.45 135.85
-----------	-------------	-----------------------	---	---



- 1 - Autorizado somente / Only authorized ACFT CAT A, B, C, D.
- 2 - Gradiente MNM de subida / MNM climb gradient:
RWY 15: 4.0% até /until 4500'. Após /After, 3.3%.
- 3 - Obstáculos próximos não considerados para o cálculo do PDG :
Close-in obstacles not considered for procedure gradient PDG:
RWY15: Poste / Pole , a partir de / from THR33, AZM239, DIST 115m, ELEV 2479'.
RWY33: Árvore / Tree, a partir de / from THR15, AZM345, DIST 1200m, ELEV 2592'.

CHANGES: AMA, EAC, FREQ, PROC, TA, VAR.