

**INSTRUMENT APPROACH
CHART (IAC)**

MANAUS / Ponta Pelada, MIL (SBMN)

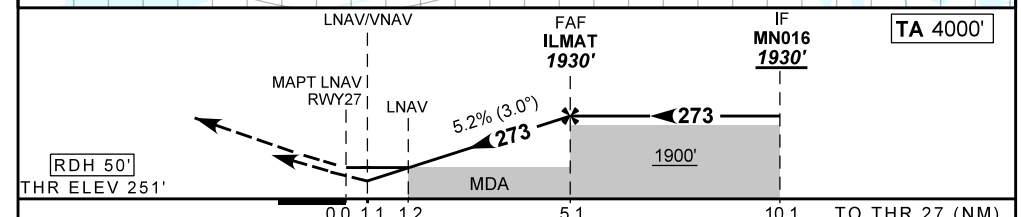
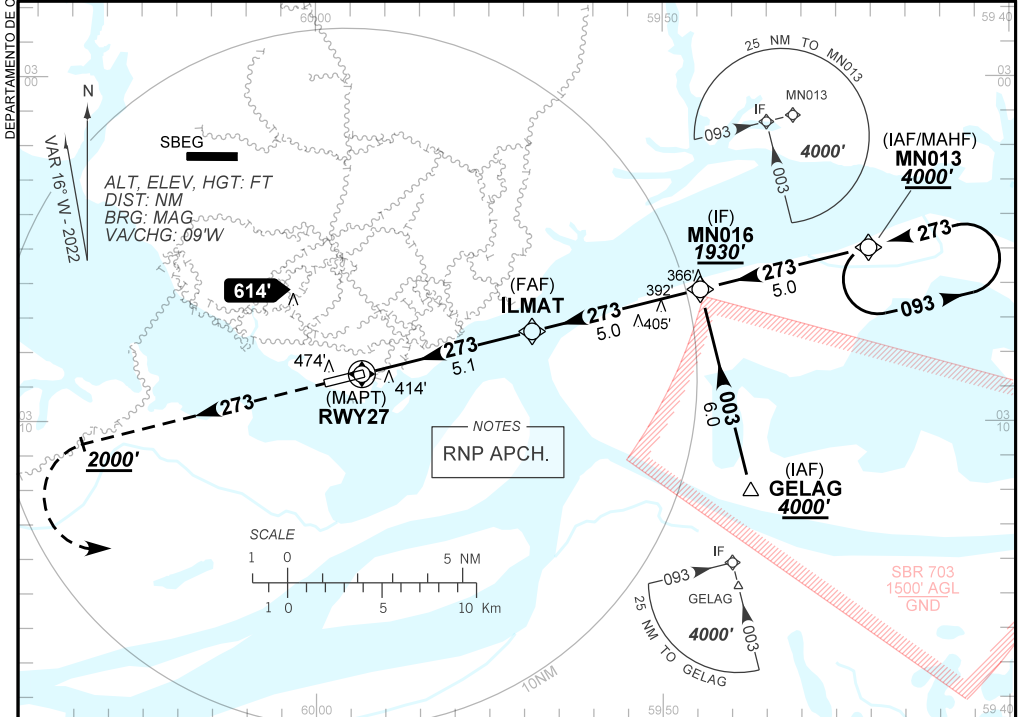
AD ELEV: 257'

RNP RWY 27

ATIS NIL	APP MANAUS 119.25 119.70 120.40	TWR PONTA PELADA 118.60	GNDC NIL
TEMP LNAV/VNAV MIN 0°C / MAX 50°C	FINAL CRS 273°	FAF: 1930'	LNAV/VNAV DA / (OCH): 653' / (402')
		LNAV MDA / (OCH): 670' / (420')	

APCH Perdida: Subir para **4000'**. Manter proa **273** até **2000'**. Após, curvar à ESQUERDA para espera em MN013.

Missed APCH: Climb to **4000'**. Maintain heading **273** until **2000'**. After, turn LEFT for holding at MN013.



RWY27	1.2	2.0	3.0	4.0	ILMAT		Ground Speed (KT)	090	110	130	150	170	190
ALT	670	938	1256	1575	1930		FPM	500	600	700	800	900	1000
(HGT)	420	687	1005	1324	1679		FAF-MAPT	NIL					

STRAIGHT-IN	CAT	A	B	C	D	E
	DA / (OCH)	653' / (402')				NA
LNAV/VNAV	ALS/NO ALS/ RVR ALS (m)	NIL / 1600 / NIL		NIL / 1900 / NIL		
	MDA / (OCH)	670' / (420')				
LNAV	ALS/NO ALS/ RVR ALS (m)	NIL / 1600 / NIL		NIL / 1900 / NIL		
	MDA / (OCH)	NA				
CIRCLING	MDA / (OCH)	NA				
	VIS (m)	NA				

DEPARTAMENTO DE CONTROLE DO ESPAÇO AEREO

CHANGES: EAC, LAYOUT, MINM OPR.