

**INSTRUMENT APPROACH
CHART (IAC)**

SÃO GONÇALO DO AMARANTE / Gov. Aluizio Alves, INTL (SBSG)

AD ELEV: 273'

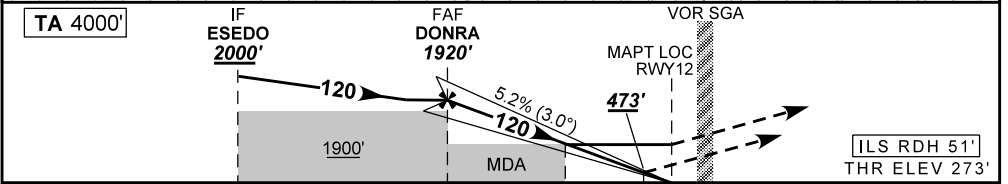
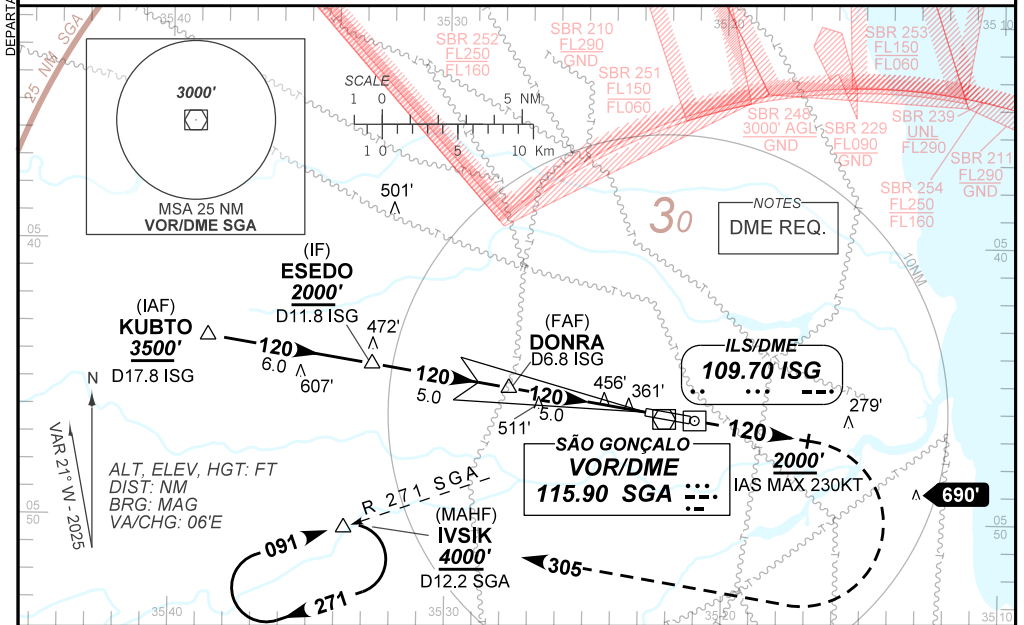
ILS Z or LOC Z RWY 12

ATIS 127.60	APP NATAL 119.30 119.65 120.65 129.80		TWR SÃO GONÇALO 118.20 118.85	GNDC SÃO GONÇALO 121.70
ILS/DME ISG 109.70 MHz	FINAL CRS 120°	FAF: 1920'	CAT I DA / (OCH): 473' / (200')	LOC MDA / (OCH): 760' / (490')

APCH Perdida: 1) Subir para **4000'**. Manter RDL **120** do VOR SGA até **2000'**. Após, curvar à DIREITA proa **305** para interceptar RDL **271** do VOR SGA até IVSIK para espera. 2) Proibido rebloqueio do VOR SGA.

Missed APCH: 1) Climb to **4000'**. Maintain **120** RDL SGA VOR until **2000'**. After, turn **RIGHT** heading **305** to intercept **271** RDL SGA VOR to IVSIK for holding. 2) Flying overhead SGA VOR is prohibited.

RMK: (*) VIS RVR ALS 550m para APCH utilizando Diretor de Voo, Piloto Automático ou Head-up Display (HUD)
(*) VIS RVR ALS 550m for APCH using a Flight Director, Autopilot or Head-up Display (HUD).



TO THR 12 (NM)	10.0	5.0	1.4	0.5	0.0
TO ISG (DME)	11.8	6.8	3.2	2.3	1.8

	DONRA	4.0	3.0	2.0	1.4	RWY12	Ground Speed (KT)	090	110	130	150	170	190
		1920	1598	1279	961	760	FPM	500	600	700	800	900	NA
		1647	1325	1006	688	490	FAF-MAPT	NA					

STRAIGHT-IN	CAT	A	B	C	D	E
	DA / (OCH)	473' / (200')				
CAT I	ALS/NO ALS/ RVR ALS (m)	800 / 1200 / 700 (*)				
	MDA / (OCH)	760' / (490')				
LOC	ALS/NO ALS/ RVR ALS (m)	900 / 1600 / 850			1500 / 2300 / 1400	
	MDA / (OCH)	NA				
CIRCLING	MDA / (OCH)	NA				
	VIS (m)	NA				

CHANGES: PROC. VAR.