

**INSTRUMENT APPROACH
CHART (IAC)**

**IPATINGA / Usiminas (SBIP)
RNP Y RWY 23
CAT (A,B,C)**

AD ELEV: 786'

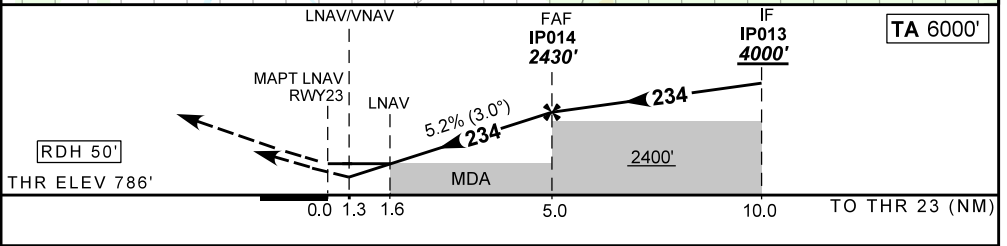
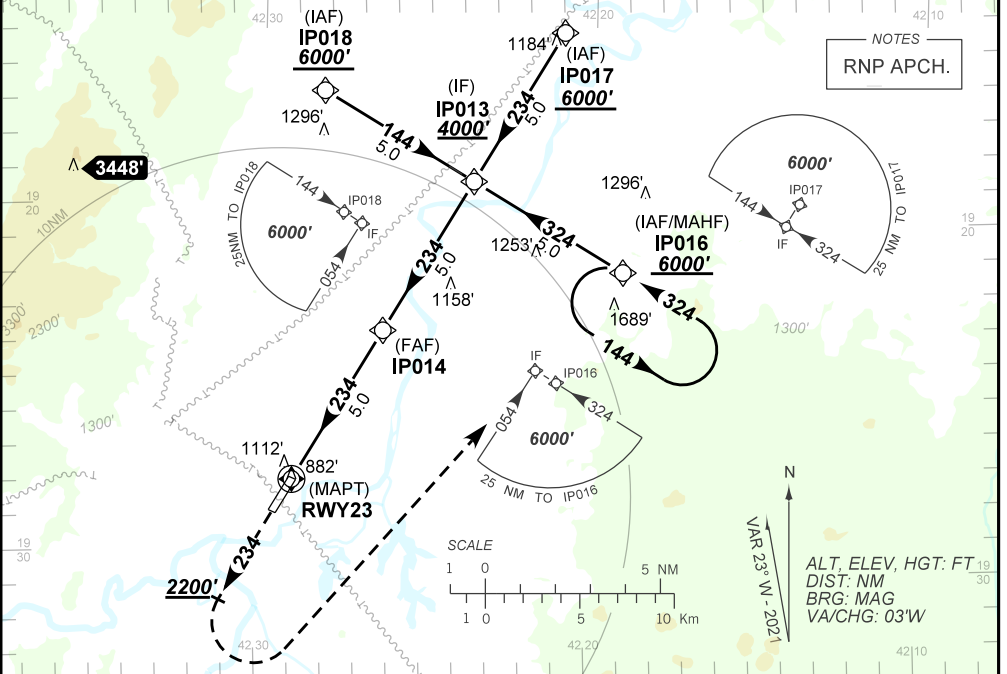
ATIS NIL	APP NIL	AFIS USIMINAS 130.00	GNDC NIL
TEMP LNAV/VNAV MIN 0°C / MAX 45°C	FINAL CRS 234°	FAF: 2430'	LNAV/VNAV DA / (OCH): 1263' / (477')
		LNAV MDA / (OCH): 1360' / (580')	

APCH Perdida: Subir para **6000'**. Manter a proa **234**. Após passar **2200'**, curvar à ESQUERDA direto para IP016 para espera.

Missed APCH: Climb to **6000'**. Maintain heading **234**. After passing **2200'**, turn LEFT direct to IP016 for holding.

RMK: NIL.

DEPARTAMENTO DE CONTROLE DO ESPAÇO AÉREO



RWY23	1.6	2.0	3.0	4.0	IP014	Ground Speed (KT)	090	110	130	150	170	190
ALT	1360	1473	1791	2110	2430	FPM	500	600	700	800	NA	NA
(HGT)	580	687	1005	1324	1644	FAF-MAPT	NA					

STRAIGHT-IN	CAT	A	B	C	D	E
	DA / (OCH)	1263' / (477')				
LNAV/VNAV	ALS/NO ALS/ RVR ALS (m)	NIL / 2200 / NIL				
	MDA / (OCH)	1360' / (580')				
LNAV	ALS/NO ALS/ RVR ALS (m)	NIL / 2200 / NIL			NIL / 2600 / NIL	
	MDA / (OCH)	NA				
CIRCLING	MDA / (OCH)	NA				
	VIS (m)	NA				

CHANGES: ALT, IDENT, MNM OPR, PROC.