

**INSTRUMENT APPROACH
CHART (IAC)**

MANAUS / Ponta Pelada, MIL (SBMN)

AD ELEV: 257'

RNP RWY 09

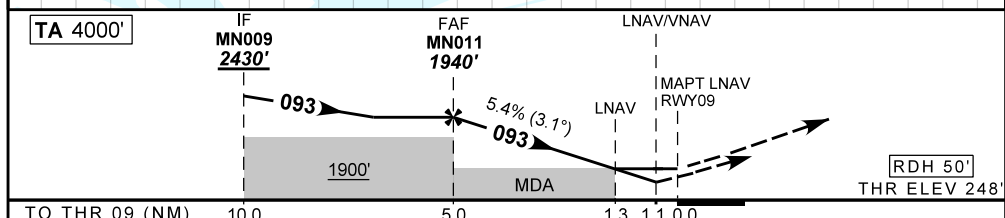
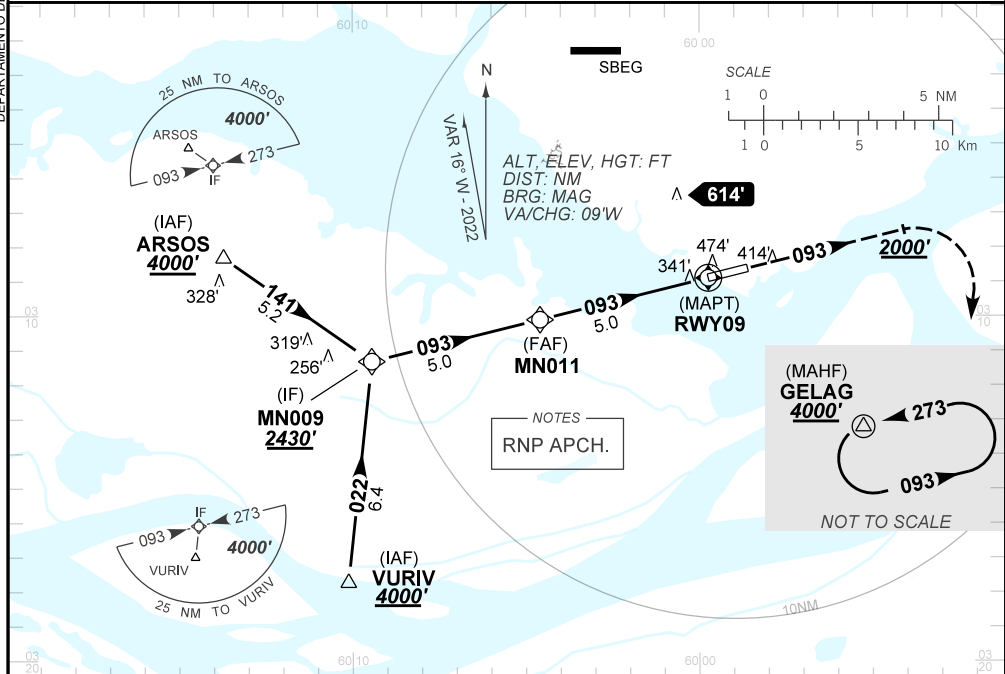
DEPARTAMENTO DE CONTROLE DO ESPAÇO AÉREO

ATIS NIL	APP MANAUS 119.25 119.70 120.40	TWR PONTA PELADA 118.60	GNDC NIL
--------------------	---	-----------------------------------	--------------------

TEMP LNAV/VNAV MIN 0°C / MAX 50°C	FINAL CRS 093°	FAF: 1940'	LNAV/VNAV DA / (OCH): 653' / (410')	LNAV MDA / (OCH): 720' / (480')
---	--------------------------	----------------------	---	---

APCH Perdida: 1) Subir para **4000'**, gradiente MNM 4%. Manter rumo **093** até **2000'**. Após, curvar à DIREITA para espera em GELAG. 2) IAS MAX 250KT.

Missed APCH: 1) Climb to **4000'**, MNM gradient 4%. Maintain course **093** until **2000'**. After, turn RIGHT for holding at GELAG. 2) IAS MAX 250KT.



TO THR 09 (NM)	IF MN009 2430'	FAF MN011 1940'	LNAV/VNAV	MAPT LNAV RWY09	Ground Speed (KT)	090	110	130	150	170	190
	10.0	5.0	1.3			1.1	0.0	500	600	700	800
					FPM						
					FAF-MAPT	NIL					

STRAIGHT-IN	CAT	A	B	C	D	E
	DA / (OCH)			653' / (410')		
LNAV/VNAV	ALS/NO ALS/ RVR ALS (m)	NIL / 1900 / NIL				
	MDA / (OCH)	720' / (480')				
LNAV	ALS/NO ALS/ RVR ALS (m)	NIL / 1600 / NIL		NIL / 2200 / NIL		
	MDA / (OCH)	NA				
CIRCLING	VIS (m)					

CHANGES: IDENT, HDG, LAYOUT, OBST, VAR.